



Federal Milk Market Administrator

U.S. Department of Agriculture

UPPER MIDWEST DAIRY NEWS

Victor J. Halverson, Market Administrator

Volume 26 Issue 9

Upper Midwest Marketing Area, Federal Order No. 30

September 2025

Inside This Issue:

2024 Sales of
Fluid Milk Product.....2

May 2024 Milk
Hauling Charges.....3

Computation of Producer
Price Differential.....4

Utilization and Classification....5

Commodity Prices and
Market Statistics.....6

Class Prices and
Producer Prices.....7

CME Prices Mostly Down in September Besides Whey

Commodity prices on the Chicago Mercantile Exchange (CME) in September were mostly down from August, with only whey seeing small gains. Comparing to last year, prices were sharply below September 2024, with whey again being the only exception. See the graph below.

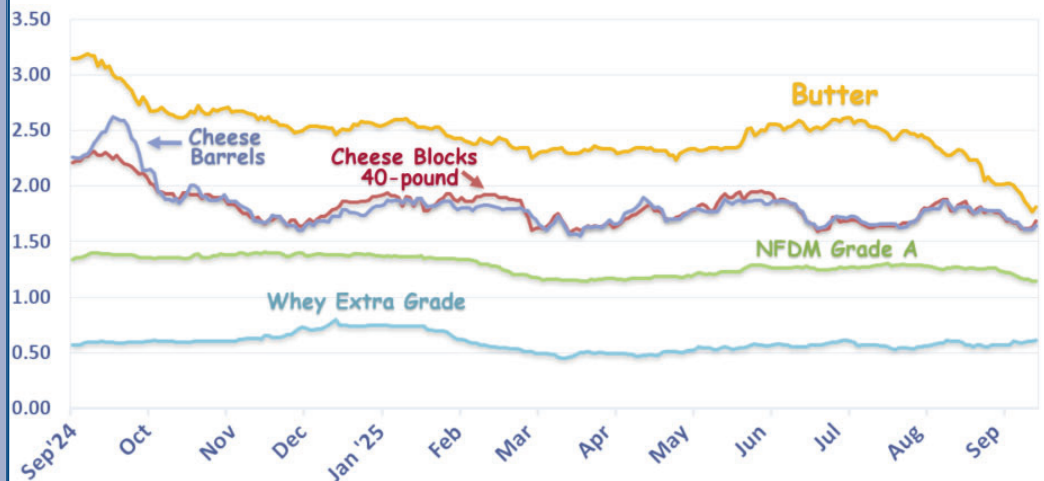
The CME barrel price for cheddar cheese on September 17 was \$1.64 per pound, down 17¢ from August and 92½¢ below last year. The CME 40-pound block price for cheddar cheese was \$1.68½ per pound, down 14½¢ from last month and 59¼¢ below last year.

The CME butter price on September 17 was \$1.81 per pound, 52¼¢ below last month and \$1.27½ below last year.

The CME price for NFDM on September 17 was \$1.14½ per pound, down 12½¢ from August and 24¾¢ below last year.

The CME whey price on September 17 was \$0.61 per pound, up ½¢ from last month and 1½¢ above last year.

Chicago Mercantile Exchange - Selected Dairy Commodity Prices *



* Prices depicted are dollars per pound for each day that trading occurred from September 1, 2024 through September 17, 2025.

Upcoming Price Release Dates

September 2025 Prices

Class & Component	10-01-2025
Producer Price	
Differential	10-11-2025

November 2025 Prices

Advanced Class &	
Price Factors	10-22-2025

See Pages 6 and 7 for previously announced prices, including the September 2025 Advanced Class Prices and Price Factors.

Pool Summary

- In August, producer milk was 2.5 billion pounds, up 10.5% daily from July but 1.2% below last August.
- Class I use was 157 million pounds, up 3.0% daily from July but 0.5% below last year. In August, Class I use was 6.2% of total producer milk.
- The August 2025 Producer Price Differential (PPD) was \$0.58 per cwt.
- The F.O. 30 Statistical Uniform Price in August was \$17.82 per cwt., down \$0.13 from July, and \$3.04 below last year. [Federal Order language](#) was amended effective June 2025.
- Market statistics for July and August are shown on Pages 4 and 5.

August 2025 Producer Milk by Class

	Percent	Product Pounds	Price \$/cwt.
Class I	6.2	156,984,741	22.13
Class II	1.2	29,563,265	19.18
Class III	91.6	2,318,125,834	17.24
Class IV	1.0	26,335,977	18.50
Total		2,531,009,817	

2024 Sales of Fluid Milk Products

Sales of fluid milk products (FMP) in the Upper Midwest Order from all sources are shown in Table 1 and are depicted graphically in Figures 1 and 2, with sales in all Federal orders shown in Figure 3 on Page 3.

Upper Midwest Order

During 2024, there were 2.9 billion pounds of fluid milk products sold in the marketing area from all sources. On a monthly basis, 2024 sales ranged from 210 million pounds in June to 257 million pounds in January.

In 2024, sales averaged 238 million pounds per month, down from 244 million pounds in 2023 and 366 million pounds in 2000, as shown in Figure 2. Since 2000, monthly average annual sales peaked at 371.5 million pounds in 2007 and have declined steadily since.

Sales of reduced fat milk (2%) continued to account for the largest share of the market at 33.9% in 2024, followed by lowfat milk (1%), then whole milk, and last was fat free milk (skim) by a fair margin.

Sales of 2%, 1%, and skim milk declined in this region from 2023 to 2024, while sales of whole milk increased. The increase in sales of whole milk was not enough to offset the decline in the other three categories, causing a decrease in total sales for the year.

All Orders

Packaged sales of fluid milk products in all marketing areas totaled 39.6 billion pounds for the year. Sales in each of the areas and the percentage they represented are shown in Figure 3 on Page 3.

Table 1
Upper Midwest Order
Monthly Average Sales
of FMP from all Sources

Product	2024	
	Million Pounds	% of Total
Whole	64.2	27.0
2%	80.6	33.9
1%	70.5	29.6
Skim	22.5	9.5
Total	237.8	

Figure 1
Packaged Sales of FMP in the Upper Midwest
Marketing Area from all Sources -- 2024

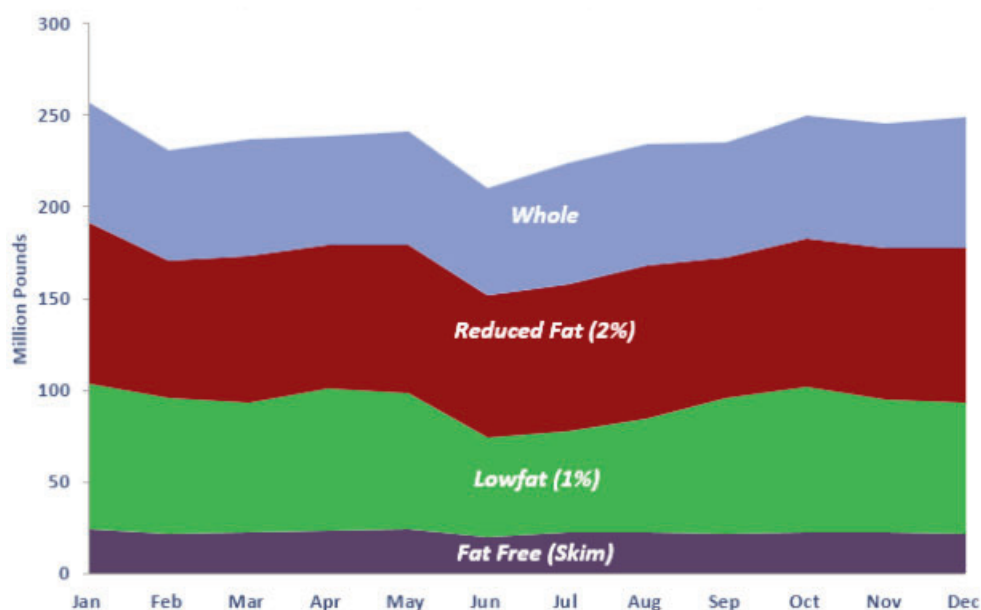
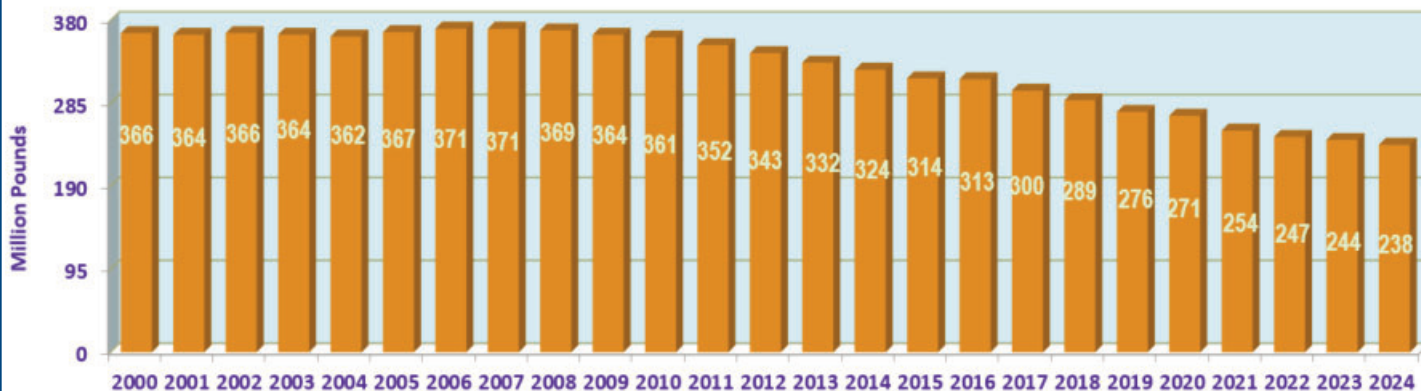


Figure 2
Monthly Average Packaged Sales of FMP in the Upper Midwest Marketing Area from all Sources



Milk Hauling Charges -- May 2024

The Upper Midwest Order recently released a staff paper prepared by Dr. Areerat Kichkha, an agricultural economist on staff. Staff Paper 25-02, entitled *Milk Hauling Charges in the Upper Midwest Marketing Area - May 2024* is available at:

<https://www.fmma30.com/StaffPapers/StaffPaper--25-02.pdf>.

The study, summarized in this article, analyzes hauling charges based on state, county, and producer size groups for May 2024. Payroll data for the 8,224 producers associated with the Upper Midwest Marketing Order during the month were examined.

Hauling Charges for the Market

The weighted average hauling charge for producers on the Upper Midwest Order in May 2024, shown in Table 1 on this page, was 50.33¢ per cwt., up from 42.02¢ in May 2023. Hauling charges have gradually increased each year since 2015, with the exception of 2020 when they took a slight dip. However, the weighted average hauling charges over the years have also shown that handlers have passed on little of the changes in fuel costs to farmers, despite the higher increase in average hauling charges in May 2024.

Hauling Charges by State

The Wisconsin weighted average hauling charge of 47.69¢ per cwt. was 2.64¢ below the market average, while the Minnesota weighted average of 46.70¢ was 3.63¢ below the market. These two states supplied 78.2% of the milk on the market in May 2024, but accounted for 73.7% of total hauling charges.

The North Dakota has the highest simple average hauling charge. The state also has a low number of farms, the longest distance from high demand areas, and less handler competition. Wisconsin, in contrast, has the lowest simple average hauling charge, with a high number of farms in close proximity to high

demand areas.

Hauling Charges by Size Range

The study indicated that as a producer's milk volume increases, the average hauling charge per hundredweight decreases. This can be seen in Table 2.

One factor responsible for this is that many Upper Midwest handlers charge a fixed hauling dollar value to dairy producers, regardless of volume of milk delivered. Therefore, as the producer's production increases, the hauling charge per hundredweight will automatically decrease. With the information we have, the dollar impact cannot be isolated.

Table 1
Average Producer Delivery, by State and for the Marketing Area - May 2024

State	Simple Average Hauling Charges	Total Hauling Charges	Production	Number of Farms	Producer Average Monthly Deliver	Weighted Average Hauling Charge
	(\$ per cwt.)	(\$)	(pounds)		(pounds)	(\$ per cwt.)
Illinois	1.1213	1,103,558.94	135,441,985	338	400,716	0.8148
Iowa	1.1985	2,941,982.95	433,164,054	537	806,637	0.6792
Michigan UP	1.0430	90,714.58	12,895,230	30	429,841	0.7035
Minnesota	0.7361	4,145,891.13	887,728,792	1,845	481,154	0.4670
North Dakota	2.0627	202,051.49	18,834,135	29	642,556	1.0843
South Dakota	0.9962	1,827,982.23	416,402,362	135	3,084,462	0.4390
Wisconsin	0.6974	13,117,820.44	2,750,882,816	5,310	518,057	0.4769
Total or Average	1.1222	23,430,001.76	4,655,149,375	8,224	566,044	0.5033

Figure 3
Packaged Sales of FMP from All Sources in Federal Milk Order Marketing Areas -- 2024 *

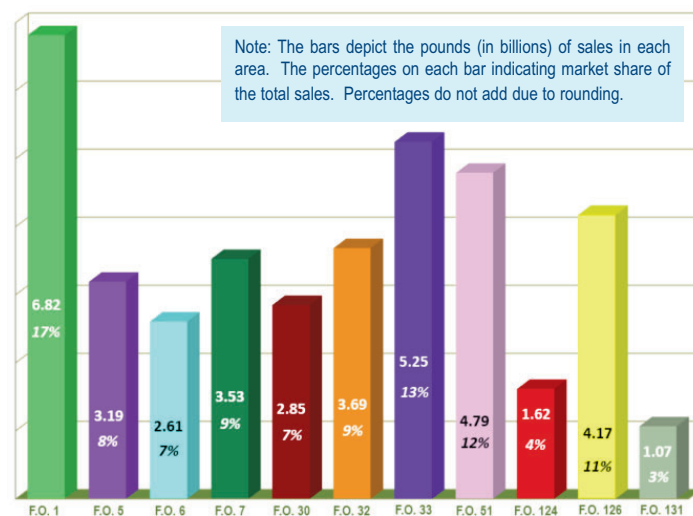


Table 2
Average Hauling Charges, by Size Range and State - May 2024
(Dollars per cwt.)

Size Range	Simple Average Hauling Charges	Total Hauling Charges	Production	Number of Farms	Producer Average Monthly Delivery	Weighted Average Hauling Charge
(pounds)	(\$ per cwt.)	(\$)	(pounds)		(pounds)	(\$ per cwt.)
Up to 49,999	1.3128	459,536.10	38,063,677	1,403	27,130	1.2073
50,000 to 99,999	0.7724	904,994.25	119,450,360	1,612	74,101	0.7576
100,000 to 249,999	0.6558	2,575,707.97	389,146,707	2,468	157,677	0.6619
250,000 to 399,999	0.6622	1,548,389.53	234,137,985	744	314,702	0.6613
400,000 to 599,999	0.6514	1,583,426.84	243,942,124	499	488,862	0.6491
600,000 to 999,999	0.5956	2,317,304.62	384,723,018	501	767,910	0.6023
1,000,000 to 1,499,999	0.5515	2,034,782.26	372,910,364	304	1,226,679	0.5456
1,500,000 to 2,499,999	0.5237	3,032,278.90	578,808,639	302	1,916,585	0.5239
2,500,000 to 4,999,999	0.4239	3,273,407.56	788,002,068	226	3,486,735	0.4154
5,000,000 or more	0.4017	5,700,173.73	1,505,964,433	165	9,127,057	0.3785
Total or Average	0.7672	23,430,001.76	4,655,149,375	8,224	566,044	0.5033

* Source: USDA, AMS, Dairy Programs, Market Information. Fluid milk products include plain, flavored, and organic whole milk; plain, flavored, and organic fat-reduced milk products (2%, 1%, and skim); buttermilk; eggnog; and other miscellaneous fluid milk products. (The Federal orders are identified in the table on Page 8 of this newsletter.)

Computation of Producer Price Differential - August 2025

	Utilization Percentage	Product Pounds	Component Pounds	Rate	Value
Class I					
Differential Value					\$ 4,629,350.35
Product	6.2%	156,984,741			
Skim Milk			153,689,855	\$ 9.26	14,231,680.60
Butterfat			3,294,886	2.8565	9,411,841.89
Class II					
Product	1.2%	29,563,265			
Nonfat Solids			2,346,401	1.1067	2,596,761.98
Butterfat			4,389,944	2.7325	11,995,521.99
Class III					
Product	91.6%	2,318,125,834			
Protein			74,411,570	1.9646	146,188,970.43
Other Solids			134,815,930	0.3204	43,195,023.99
Butterfat			88,651,183	2.7255	241,618,799.28
Class IV					
Product	1.0%	26,335,977			
Nonfat Solids			1,626,441	1.0323	1,678,975.03
Butterfat			8,978,539	2.7255	24,471,008.03
SCC Adjustment (Class II, III, and IV)					3,109,638.10
Total Producer Milk *		2,531,009,817			\$ 503,127,571.67
Add:					
Overage					7,184.80
Inventory Reclassified					(63,453.35)
Other Source Milk \$.60(h) thru .60(k)					87,406.95
Subtract:					
Transportation Credit					8,388.16
Assembly Credit					124,562.67
Producer Milk Protein					159,023,594.17
Producer Milk Other Solids					46,990,754.71
Producer Milk Butterfat					287,034,811.48
Producer Milk SCC Adjustment					3,314,022.55
Total Milk and Value		2,531,009,817			\$ 6,662,576.33
Add:					
Location Adjustment -- Producer and Unregulated Supply Plant Milk					8,229,504.37
One-Half Unobligated Balance Producer Settlement Fund					1,002,960.39
Total Value				0.628012	\$ 15,895,041.09
Subtract: Producer Settlement Fund Reserve				0.048012	1,215,184.15

Producer Price Differential ** **\$ 0.58** **\$ 14,679,856.94**

* An estimated 1.5 billion pounds of milk was not pooled.

** Producer Price Differential is dollars per cwt. at the Base Zone of Cook County, Illinois.

Upper Midwest Pool Statistics - August 2025

Market Class I Differential Rate	Pool Plants	Received at Pool Plants	Diverted to Pool and Nonpool Plants	Total	Location Adjustment to Producers	Class I Differential to Handlers
Cwt.	Number	Pounds	Pounds	Pounds	Value	Pounds
\$3.10*	5	17,592,687	161,745,924	179,338,611	380,043	5,661,010
\$2.90	26	102,130,027	1,562,967,162	1,665,097,189	5,272,362	134,211,846
\$2.80	15	93,598,785	592,975,232	686,574,017	2,577,099	17,111,885
Total	46	213,321,499	2,317,688,318	2,531,009,817	8,229,504	156,984,741
						4,629,350

*Includes restricted data from the \$3.60, \$3.20, and \$2.20 zones.

Utilization and Classification of Milk

	August 2025		July 2025	August 2024
	Product Pounds	Butterfat Pounds	Product Pounds	Product Pounds
Class I Utilization:				
Packaged Disposition				
Milk	42,148,885	1,401,829	43,495,101	40,242,105
Flavored Milk	7,960,986	278,349	6,389,996	4,763,173
Reduced Fat Milk	53,687,426	1,048,678	54,585,059	56,709,642
Lowfat Milk	26,314,310	252,961	25,607,026	27,099,908
Fat Free Milk	13,888,443	14,324	14,097,009	15,155,636
Flavored Reduced and Fat Free Milk	13,659,307	117,629	8,763,115	13,912,898
Buttermilk	1,630,993	19,526	1,672,714	1,722,664
Total Packaged Disposition	159,290,350	3,133,296	154,610,020	159,606,026
Total Ending Inventory	17,468,754	329,030	17,273,614	16,422,166
Bulk to Nonpool Plants	703,945	26,597	841,336	838,044
Shrinkage	2,059,469	218,044	1,089,590	1,707,488
Total Class I Utilization	179,522,518	3,706,967	173,814,560	178,573,724
Other Order Plants	(4,540,850)	(79,708)	(3,296,340)	(4,921,792)
Beginning Inventory	(17,273,614)	(324,910)	(18,087,036)	(15,891,448)
Reused Products	0	0	0	0
Other Source Milk	(31,484)	(570)	(37,861)	(42,016)
Overage	0	0	0	0
Interhandler Adjustment	(691,829)	(6,893)	(110)	(1,334)
Class I Producer Milk	156,984,741	3,294,886	152,393,213	157,717,134
Class II Utilization:				
Total Class II Utilization	33,344,146	4,597,304	33,308,938	30,969,829
Other Order Plants	(2,764)	(2,764)	(784,264)	(8,927)
Beginning Inventory	(537,753)	(156,699)	(556,723)	(274,939)
Reused Products	(3,194,378)	(1,911)	(3,232,321)	(2,615,202)
Other Source Milk	(45,986)	(45,986)	(30,590)	(18,201)
Overage	0	0	0	0
Class II Producer Milk	29,563,265	4,389,944	28,705,040	28,062,235
Class III Utilization:				
Total Class III Utilization	2,323,699,895	88,719,963	2,092,461,864	2,367,296,773
Other Order Plants	(223,393)	(10,656)	(850,157)	(329,858)
Beginning Inventory	(3,549,323)	(31,329)	(5,900,646)	(6,165,570)
Reused Products	0	0	0	0
Other Source Milk	(1,765,048)	(26,046)	(751,042)	(1,154,731)
Overage	(36,297)	(749)	(43,345)	(305,694)
Class III Producer Milk	2,318,125,834	88,651,183	2,084,916,674	2,359,340,920
Class IV Utilization:				
Total Class IV Utilization	190,567,310	16,014,842	198,211,259	178,247,872
Other Order Plants	(242,510)	(6,940)	(1,020,822)	(805,841)
Beginning Inventory	(7,080,669)	(368,740)	(5,822,371)	(6,062,711)
Reused Products	0	0	0	0
Other Source Milk	(156,906,788)	(6,659,795)	(167,089,945)	(155,431,646)
Overage	(1,366)	(828)	(134,379)	(2,358)
Class IV Producer Milk	26,335,977	8,978,539	24,143,742	15,945,316
Total Producer Milk -- All Classes	2,531,009,817	105,314,552	2,290,158,669	2,561,065,605

-- Restricted Information

Commodity Prices

Month/Year	Weighted Monthly Average Prices						Weighted Two-Week Average Prices					
	Cheddar Cheese			Nonfat			Cheddar Cheese			Nonfat		
	Blocks	Barrels	Average	Butter	Dry Milk	Dry Whey	Blocks	Barrels	Average	Butter	Dry Milk	Dry Whey
	<i>Dollars per Pound</i>						<i>Dollars per Pound</i>					
Aug 2024	1.9812	2.0573	2.0399	3.1139	1.2268	0.4864	1.9548	2.0030	1.9985	3.1061	1.2212	0.4848
Sep	2.2013	2.3319	2.2882	3.1537	1.2899	0.5321	2.1394	2.2646	2.2225	3.1745	1.2745	0.5235
Oct	2.1605	2.2760	2.2400	2.7191	1.3423	0.5588	2.1690	2.2678	2.2401	2.6840	1.3427	0.5636
Nov	1.9096	1.8973	1.9198	2.7002	1.3773	0.5922	1.9281	1.9290	1.9449	2.7265	1.3771	0.5893
Dec	1.7583	1.7326	1.7608	2.5748	1.3952	0.6353	1.7565	1.7261	1.7563	2.5916	1.3966	0.6207
Jan 2025	1.8954	1.8477	1.8851	2.6042	1.3801	0.7218	1.9004	1.8376	1.8803	2.6049	1.3907	0.7194
Feb	1.9158	1.8707	1.9077	2.4990	1.3347	0.6650	1.9093	1.8801	1.9097	2.5236	1.3587	0.6986
Mar	1.8420	1.7732	1.8215	2.3385	1.2176	0.5532	1.8977	1.8250	1.8751	2.3419	1.2461	0.5701
Apr	1.7117	1.7244	1.7361	2.3520	1.1773	0.4988	1.6978	1.7115	1.7230	2.3549	1.1801	0.4982
May	1.8177	1.8284	1.8404	2.3703	1.1925	0.5119	1.8019	-	1.8019	2.3519	1.1862	0.5080
Jun	1.9322	-	1.9322	2.4880	1.2531	0.5497	1.9373	-	1.9373	2.4685	1.2463	0.5436
Jul	1.7634	-	1.7634	2.5753	1.2783	0.5670	1.7471	-	1.7471	2.5860	1.2786	0.5713
Aug	1.7529	-	1.7529	2.4778	1.2820	0.5779	1.7205	-	1.7205	2.5120	1.2871	0.5814
Sep							1.8470	-	1.8470	2.1992	1.2791	0.5766

Month/Year	Chicago Mercantile Exchange					USDA Dairy Market News				
	Butter	Cheddar Cheese		NFDM	Whey	NFDM Low/Medium Heat		Whey Powder		
	Grade AA	Blocks	Barrels	Grade A	Extra Grade	Central & East	West	Northeast	Central	West
	<i>Dollars per Pound</i>									
Aug 2024	3.1431	2.0298	2.1235	1.2607	0.5714	1.2319	1.2385	0.5075	0.5183	0.5339
Sep	3.0261	2.2333	2.4125	1.3763	0.5888	1.3381	1.3588	0.5474	0.5479	0.5508
Oct	2.6736	1.9290	1.9387	1.3628	0.6017	1.3520	1.3562	0.5681	0.5667	0.5689
Nov	2.6003	1.7184	1.7237	1.3905	0.6408	1.3772	1.3822	0.5909	0.5821	0.5884
Dec	2.5339	1.7246	1.7945	1.3824	0.7387	1.4038	1.3820	0.6544	0.6820	0.6924
Jan 2025	2.5400	1.8782	1.8523	1.3592	0.7199	1.3843	1.3665	0.6829	0.7131	0.7362
Feb	2.3932	1.8845	1.8038	1.2772	0.5629	1.2913	1.2985	0.6288	0.5955	0.6598
Mar	2.3177	1.6438	1.6432	1.1593	0.4863	1.1971	1.1863	0.5449	0.4693	0.5685
Apr	2.3176	1.7261	1.7538	1.1725	0.4885	1.1659	1.1663	0.4939	0.4580	0.5188
May	2.3708	1.8620	1.8182	1.2276	0.5406	1.2190	1.2065	0.5068	0.4957	0.5155
Jun	2.5430	1.7800	1.7669	1.2639	0.5671	1.2703	1.2629	0.5405	0.5308	0.5503
Jul	2.5314	1.6627	1.6764	1.2788	0.5655	1.2745	1.2701	0.5509	0.5545	0.5730
Aug	2.2886	1.8061	1.7935	1.2651	0.5740	1.2793	1.2680	0.5610	0.5536	0.5712

Market Statistics

Month/Year	Distributing Plants	Supply Plants	Coop .9(c) Handlers	Producers	Total Producer Milk	Est. Average Daily Delivery Per Producer	Class I Utilization	Butterfat Test	Protein Test	Other Solids Test	Weighted Average SCC
					<i>Mil. lbs.</i>	<i>Pounds</i>	<i>Percent</i>	<i>Percent</i>	<i>Percent</i>	<i>Percent</i>	<i>(000)</i>
Jun 2024	10	40	9	4,941	2,570	17,341	5.5	4.16	3.18	5.80	175
Jul	9	38	8	4,951	2,670	17,393	5.7	4.13	3.16	5.80	191
Aug	9	39	10	4,832	2,561	17,097	6.2	4.16	3.18	5.79	207
Sep	9	39	10	3,859	1,628	14,062	9.6	4.18	3.21	5.79	184
Oct	9	39	11	3,655	1,619	14,292	10.3	4.30	3.32	5.79	170
Nov	10	39	11	3,619	1,818	16,743	9.0	4.39	3.35	5.78	158
Dec	10	39	10	4,003	2,078	16,744	7.9	4.47	3.37	5.79	155
Jan 2025	11	38	11	4,115	2,226	17,453	7.8	4.48	3.37	5.79	153
Feb	11	38	10	4,207	2,174	18,455	7.0	4.47	3.36	5.80	153
Mar	11	38	10	4,561	2,627	18,582	5.8	4.40	3.32	5.80	153
Apr	11	38	10	4,764	2,584	18,078	6.2	4.38	3.32	5.79	154
May	10	38	10	5,139	2,121	13,315	7.7	4.30	3.27	5.81	158
Jun	10	38	10	4,337	2,206	16,955	6.4	4.24	3.22	5.79	168
Jul	9	38	11		2,290		6.7	4.12	3.14	5.80	192
Aug	9	37	11		2,531		6.2	4.16	3.20	5.79	201

Class Prices

Month/Year	Class I Price Mover				Class I Price at Cook County, IL			Class II Price			
	Butterfat	Skim Milk	ESL Adjustment	3.50%	Butterfat	Skim Milk	3.50%	Butterfat	Nonfat Solids	Skim Milk	3.50%
	<i>lb.</i>	<i>cwt.</i>	<i>cwt.</i>	<i>cwt.</i>	<i>lb.</i>	<i>cwt.</i>	<i>cwt.</i>	<i>lb.</i>	<i>lb.</i>	<i>cwt.</i>	<i>cwt.</i>
Aug 2024	3.5872	9.08	-	21.32	3.6052	10.88	23.12	3.5702	1.1000	9.90	22.05
Sep	3.5538	9.49	-	21.60	3.5718	11.29	23.40	3.6184	1.1211	10.09	22.40
Oct	3.6366	10.82	-	23.17	3.6546	12.62	24.97	3.0921	1.1733	10.56	21.01
Nov	3.0426	12.31	-	22.53	3.0606	14.11	24.33	3.0693	1.2411	11.17	21.52
Dec	3.0941	10.98	-	21.43	3.1121	12.78	23.23	2.9174	1.2744	11.47	21.28
Jan 2025	2.9307	10.49	-	20.38	2.9487	12.29	22.18	2.9530	1.2944	11.65	21.58
Feb	2.9468	11.35	-	21.27	2.9648	13.15	23.07	2.8256	1.2889	11.60	21.08
Mar	2.8484	11.45	-	21.02	2.8664	13.25	22.82	2.6312	1.2567	11.31	20.12
Apr	2.6284	10.75	-	19.57	2.6464	12.55	21.37	2.6476	1.1456	10.31	19.22
May	2.6441	9.45	-	18.37	2.6621	11.25	20.17	2.6697	1.0800	9.72	18.72
Jun	2.5730	8.55	1.38	17.26	2.6050	11.75	20.46	2.7448	1.0156	9.14	18.43
Jul	2.7142	9.66	1.14	18.82	2.7462	12.86	22.02	2.8505	1.0744	9.67	19.31
Aug	2.8565	9.26	0.57	18.93	2.8885	12.46	22.13	2.7325	1.1067	9.96	19.18
Sep	2.7669	9.34	0.53	18.70	2.7989	12.54	21.90		1.1156	10.04	
Oct	2.3881	10.03	0.97	18.04	2.4201	13.23	21.24		1.1067	9.96	

Month/Year	Class III Price					Class IV Price			
	Butterfat	Protein	Other Solids	Skim Milk	3.50%	Butterfat	Nonfat Solids	Skim Milk	3.50%
	<i>lb.</i>	<i>lb.</i>	<i>lb.</i>	<i>cwt.</i>	<i>cwt.</i>	<i>lb.</i>	<i>lb.</i>	<i>cwt.</i>	<i>cwt.</i>
Aug 2024	3.5632	2.1756	0.2959	8.49	20.66	3.5632	1.0484	9.44	21.58
Sep	3.6114	2.9249	0.3430	11.09	23.34	3.6114	1.1109	10.00	22.29
Oct	3.0851	3.3238	0.3705	12.49	22.85	3.0851	1.1628	10.47	20.90
Nov	3.0623	2.3160	0.4049	9.57	19.95	3.0623	1.1974	10.78	21.12
Dec	2.9104	1.9637	0.4493	8.74	18.62	2.9104	1.2151	10.94	20.74
Jan 2025	2.9460	2.3267	0.5384	10.39	20.34	2.9460	1.2002	10.80	20.73
Feb	2.8186	2.5337	0.4799	10.69	20.18	2.8186	1.1552	10.40	19.90
Mar	2.6242	2.4606	0.3647	9.78	18.62	2.6242	1.0393	9.35	18.21
Apr	2.6406	2.1682	0.3087	8.54	17.48	2.6406	0.9994	8.99	17.92
May	2.6627	2.4810	0.3222	9.59	18.57	2.6627	1.0145	9.13	18.13
Jun	2.7378	2.5328	0.2914	9.57	18.82	2.7378	1.0037	9.03	18.30
Jul	2.8435	1.8730	0.3092	7.63	17.32	2.8435	1.0286	9.26	18.89
Aug	2.7255	1.9646	0.3204	7.98	17.24	2.7255	1.0323	9.29	18.50

Producer Prices

Month/Year	Producer Price Differential	Statistical Uniform Price (at 3.50%)	Butterfat Price	Protein Price	Other Solids Price	SCC Adjustment Rate	Producer Mailbox Price (at test)
	<i>\$ per cwt.</i>	<i>\$ per cwt.</i>	<i>\$ per lb.</i>	<i>\$ per lb.</i>	<i>\$ per lb.</i>	<i>\$ per cwt.</i>	<i>\$ per cwt.</i>
Jun 2024	0.18	20.05	3.5444	2.0546	0.2326	0.00100	21.79
Jul	0.25	20.04	3.5720	1.9466	0.2571	0.00099	21.63
Aug	0.20	20.86	3.5632	2.1756	0.2959	0.00102	23.08
Sep	(0.24)	23.10	3.6114	2.9249	0.3430	0.00114	25.51
Oct	(0.47)	22.38	3.0851	3.3238	0.3705	0.00112	24.91
Nov	0.38	20.33	3.0623	2.3160	0.4049	0.00096	23.04
Dec	0.36	18.98	2.9104	1.9637	0.4493	0.00088	23.51
Jan 2025	0.13	20.47	2.9460	2.3267	0.5384	0.00094	23.77
Feb	0.13	20.31	2.8186	2.5337	0.4799	0.00095	23.43
Mar	0.20	18.82	2.6242	2.4606	0.3647	0.00091	21.55
Apr	0.27	17.75	2.6406	2.1682	0.3087	0.00087	20.40
May	0.07	18.64	2.6627	2.4810	0.3222	0.00092	21.10
Jun	0.28	19.10	2.7378	2.5328	0.2914	0.00097	21.11
Jul	0.63	17.95	2.8435	1.8730	0.3092	0.00088	
Aug	0.58	17.82	2.7255	1.9646	0.3204	0.00088	

Summary of Federal Order Data - August 2025

Federal Order Number / Name	Producer Deliveries	Class I Producer Receipts	Class I Utilization	Class I Price	Producer Price Differential	Uniform or Statistical Uniform Price at 3.5% Butterfat		
						FOB Market**	FOB Cook Cty. Illinois**	Change From Previous Year
	Thousand Pounds		Percent		Dollars per Cwt.		Dollars per Cwt.	
1 Northeast	2,334,861	620,587	26.6	\$ 24.03	\$3.08	\$ 20.32	\$ 18.42	(\$2.32)
5 Appalachian	417,159	304,809	73.1	24.53	n/a	23.02	20.62	(0.96)
6 Florida	212,560	167,034	78.6	25.73	n/a	24.11	20.51	(1.70)
7 Southeast	265,225	203,003	76.5	24.73	n/a	23.55	20.95	(1.02)
30 Upper Midwest	2,531,010	156,985	6.2	22.13	0.58	17.82	17.82	(3.04)
32 Central	1,237,343	336,193	27.2	22.13	1.87	19.11	19.11	(2.23)
33 Mideast	1,829,066	576,866	31.5	22.73	2.24	19.48	18.88	(2.24)
51 California	1,986,964	373,558	18.8	21.73	1.37	18.61	19.01	(2.89)
124 Pacific Northwest	555,188	115,445	20.8	21.63	1.47	18.71	19.21	(2.66)
126 Southwest	1,331,045	327,015	24.6	22.63	2.01	19.32	18.82	(2.75)
131 Arizona	354,822	103,804	29.3	21.53	n/a	19.14	19.74	(3.00)

All Market Average or Total * 13,055,244 3,285,300 25.2

n/a = Not applicable. * May not add due to rounding. **Use new base zone values listed in the [new Class I Differentials](#) effective June 1, 2025.

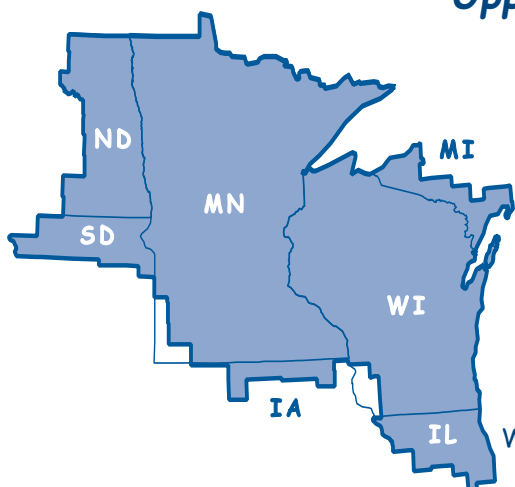
In accordance with Federal civil rights law and U.S. Department of Agriculture (USDA) civil rights regulations and policies, the USDA, its Agencies, offices, and employees, and institutions participating in or administering USDA programs are prohibited from discriminating based on race, color, national origin, religion, sex, disability, age, marital status, family/parental status, income derived from a public assistance program, political beliefs, or reprisal or retaliation for prior civil rights activity, in any program or activity conducted or funded by USDA (not all bases apply to all programs). Remedies and complaint filing deadlines vary by program or incident.

Persons with disabilities who require alternative means of communication for program information (e.g., Braille, large print, audiotape, American Sign Language, etc.) should contact the responsible Agency or USDA's TARGET Center at (202) 720-2600 (voice and TTY) or contact USDA through the Federal Relay Service at 711. Additionally, program information may be made available in languages other than English.

To file a program discrimination complaint, complete the USDA Program Discrimination Complaint Form, AD-3027, found online at [How to File a Program Discrimination Complaint](#) and at any USDA office or write a letter addressed to USDA and provide in the letter all of the information requested in the form. To request a copy of the complaint form, call (866) 632-9992. Submit your completed form or letter to USDA by: (1) mail: U.S. Department of Agriculture, Office of the Assistant Secretary for Civil Rights, 1400 Independence Avenue, SW, Washington, D.C. 20250-9410; (2) fax: (202) 690-7442; or (3) email: program.intake@usda.gov.

USDA is an equal opportunity provider, employer, and lender.

Upper Midwest Marketing Area F.O. 30



Phone: (952) 831-5292

Fax: (952) 831-8249

Website: www.fmma30.com

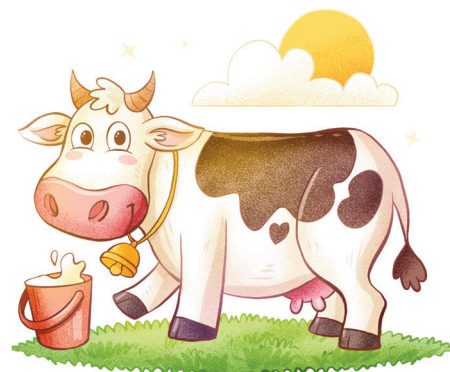


Image by pikisuperstar on Freepik