



Federal Milk Market Administrator

U.S. Department of Agriculture

# UPPER MIDWEST DAIRY NEWS

Victor J. Halverson, Market Administrator

Volume 26 Issue 4

Upper Midwest Marketing Area, Federal Order No. 30

April 2025

## Inside This Issue:

2024 Mailbox Prices.....2-3

Computation of Producer  
Price Differential.....4

Utilization and Classification....5

Commodity Prices and  
Market Statistics.....6

Class Prices and  
Producer Prices.....7

## CME Prices Mostly Up in April Except for Whey

Commodity prices on the Chicago Mercantile Exchange (CME) were mostly up in April, except for whey, which was slightly down. Comparing prices to last year, most commodities were above April 2024, except for butter which was down. See the graph below.

The CME barrel price for cheddar cheese on April 21 was \$1.80¾ per pound, up 25¾¢ from March and 3¾¢ above last year. Meanwhile, the CME 40-pound block price for cheddar cheese was \$1.77½ per pound,

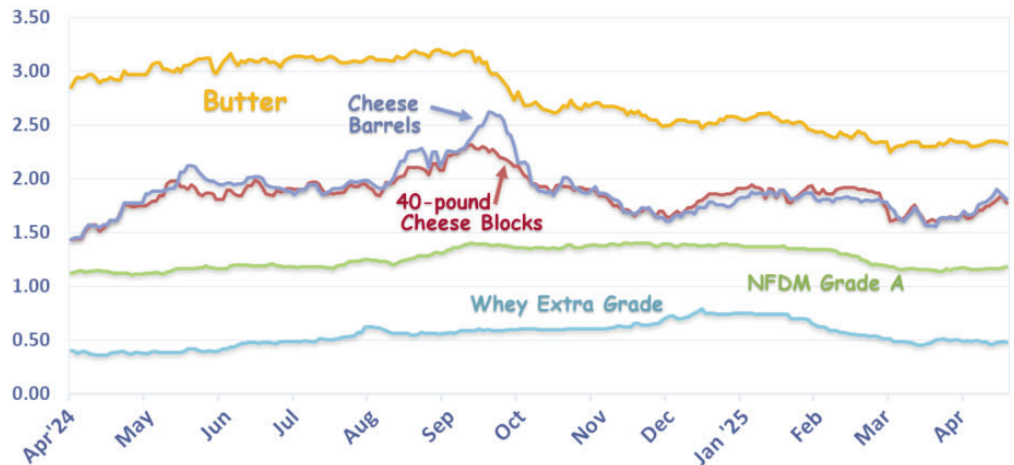
up 17¼¢ from last month, and 1½¢ above last year.

The CME butter price on April 21 was \$2.32 per pound, up 1¾¢ from last month, but 68¢ below last year.

The CME price for NFDM on April 21 was \$1.18¾ per pound, up 3¾¢ from March and 6¼¢ above last year.

The CME whey price on April 21 was \$0.47¾ per pound, down 2¼¢ from last month but 8¾¢ above last year.

## Chicago Mercantile Exchange - Selected Dairy Commodity Prices \*



\* Prices depicted are dollars per pound for each day that trading occurred from April 1, 2024 through April 21, 2025.

## Upcoming Price Release Dates

### April 2025 Prices

Class & Component 04-30-2025  
Producer Price  
Differential 05-12-2025

### June 2025 Prices

Advanced Class &  
Price Factors 05-21-2025

See Pages 6 and 7 for previously announced prices, including the April and May 2025 Advanced Class Prices and Price Factors.

## Pool Summary

- In March, producer milk was 2.6 billion pounds, up 9.2% daily from February but 3.1% below last March.
- Class I use was 153 million pounds, down 9.0% daily from February, and 2.0% below last year. In March, Class I use was 5.8% of total producer milk.
- The March 2025 Producer Price

Differential (PPD) was \$0.20 per cwt.

- The F.O. 30 Statistical Uniform Price in March was \$18.82 per cwt., down \$1.49 from February, but \$2.12 above last year.
- Market statistics for February and March are shown on Pages 4 and 5.

## March 2025 Producer Milk by Class

	Percent	Product Pounds	Price \$/cwt.
Class I	5.8	152,611,395	22.82
Class II	1.2	31,029,339	20.12
Class III	87.6	2,300,695,712	18.62
Class IV	5.4	143,043,976	18.21
<b>Total</b>		<b>2,627,380,422</b>	

# 2024 Mailbox Milk Price was \$21.80

**F**or 2024, the all-market mailbox price was \$21.80, up \$2.12 from 2023, but \$2.84 below the most recent record high price set in 2022. (See Table 2 on Page 3.)

The Dairy Program of the Agricultural Marketing Service, through its Federal milk order offices, collects and publishes

*mailbox milk prices.* These prices attempt to show what dairy farmers actually receive in their milk checks.

Mailbox prices for 2024 are shown in Table 1 below for 22 regions in the United States. The regions' prices are reported for are all or a portion of a Federal milk order, as you can see in the map on Page 3.

**Table 1 - 2024 Mailbox Milk Prices <sup>1/</sup> for Selected Reporting Areas in Federal Milk Orders**

Reporting Area <sup>2/</sup>	Jan	Feb	Mar	Apr	May	Jun	Jul	Aug	Sep	Oct	Nov	Dec	Weighted Average <sup>3/</sup>
<i>Dollars Per Hundredweight</i>													
New England States <sup>4/</sup>	\$21.19	\$21.75	\$22.08	\$21.83	\$22.38	\$22.86	\$22.98	\$23.59	\$25.27	\$25.01	\$24.69	\$23.86	<b>\$23.11</b>
New York	20.94	21.36	21.85	21.63	22.11	22.63	22.87	23.49	25.18	24.89	24.55	23.67	<b>22.94</b>
Eastern Pennsylvania <sup>5/</sup>	20.57	20.95	21.33	21.17	21.67	22.16	22.23	22.94	24.76	24.50	24.13	23.41	<b>22.46</b>
Appalachian States <sup>6/</sup>	21.64	21.36	22.22	22.40	22.12	23.02	23.89	24.31	25.08	25.38	25.47	24.42	<b>23.39</b>
Southeast States <sup>7/</sup>	22.34	22.10	23.45	23.68	23.15	23.96	25.09	25.71	26.46	26.75	26.87	25.74	<b>24.58</b>
Southern Missouri <sup>8/</sup>	19.96	19.87	19.77	19.70	20.66	21.83	22.80	24.15	26.17	26.30	26.61	25.62	<b>22.32</b>
Florida	23.35	23.11	24.11	24.64	24.00	24.84	25.34	26.41	26.66	26.99	27.05	26.00	<b>25.12</b>
Western Pennsylvania <sup>9/</sup>	20.02	20.40	22.19	20.28	21.18	22.05	23.53	22.85	24.60	24.53	24.01	23.05	<b>22.29</b>
Ohio	20.44	20.42	20.98	20.55	21.41	22.39	22.65	23.51	25.02	24.95	24.46	23.78	<b>22.54</b>
Indiana	20.46	20.60	21.26	20.82	21.38	22.32	22.93	23.53	24.82	24.64	24.03	23.34	<b>22.61</b>
Michigan	19.27	19.16	20.14	19.44	20.46	21.65	22.06	22.71	24.03	23.69	23.30	22.43	<b>21.57</b>
Wisconsin	18.00	18.73	18.91	18.34	21.01	21.62	21.47	23.04	25.25	24.84	22.89	23.87	<b>21.22</b>
Minnesota	17.98	18.85	18.66	18.80	22.08	22.27	22.06	23.27	26.37	24.97	23.47	22.34	<b>21.24</b>
Iowa	17.88	18.52	18.44	18.29	21.06	21.26	21.28	22.28	24.23	22.78	21.75	21.91	<b>20.75</b>
Illinois	19.51	19.82	20.07	19.59	21.05	22.10	22.16	23.07	24.81	24.88	24.00	23.08	<b>21.92</b>
Corn Belt States <sup>10/</sup>	18.35	18.89	19.01	18.81	20.43	21.06	20.99	21.52	23.53	23.37	22.55	21.74	<b>20.84</b>
Western Texas <sup>11/</sup>	18.38	19.15	19.27	19.29	21.15	21.70	21.66	22.13	24.51	23.68	22.82	22.02	<b>21.33</b>
New Mexico	17.67	18.28	18.26	18.13	19.36	20.13	20.04	20.37	22.48	22.62	22.05	20.56	<b>19.96</b>
Northwest States <sup>12/</sup>	18.99	19.28	19.71	19.41	20.66	21.55	21.38	21.00	23.08	22.77	22.04	21.06	<b>20.90</b>
California	18.52	19.17	19.50	19.21	21.36	22.21	22.21	23.16	25.13	24.26	23.91	22.57	<b>21.69</b>
All Federal Order Areas <sup>13/</sup>	\$19.14	\$19.63	\$19.98	\$19.71	\$21.33	\$22.04	\$22.10	\$22.93	24.78	\$24.28	\$23.63	\$22.88	<b>\$21.80</b>
Upper Midwest Order <sup>14/</sup>	<b>\$18.03</b>	<b>\$18.78</b>	<b>\$18.86</b>	<b>\$18.47</b>	<b>\$21.28</b>	<b>\$21.79</b>	<b>\$21.63</b>	<b>\$23.08</b>	<b>\$25.51</b>	<b>\$24.91</b>	<b>\$23.04</b>	<b>\$23.51</b>	<b>\$21.85</b>

<sup>1/</sup> Net pay price received by dairy farmers for milk. Includes all payments received for milk sold and all costs associated with marketing the milk. Prices are weighted averages of the prices reported for all orders receiving milk from the reporting area and are reported at the average butterfat tests. Prices include, for the most part, the assessment under the Cooperatives Working Together (CWT) program.

<sup>2/</sup> Information is shown for those areas for which prices are reported for at least 75% of the milk marketed under Federal milk orders. The price shown is the weighted average of the prices reported for all orders that received milk from that area.

<sup>3/</sup> Figures are annual averages -- the weighted average of the monthly figures.

<sup>4/</sup> Includes Connecticut, Maine, Massachusetts, New Hampshire, Rhode Island, and Vermont.

<sup>5/</sup> All counties to the east of those listed in footnote 9.

<sup>6/</sup> Includes Kentucky, North Carolina, South Carolina, Tennessee, and Virginia.

<sup>7/</sup> Includes Alabama, Arkansas, Georgia, Louisiana, and Mississippi.

<sup>8/</sup> The counties of Vernon, Cedar, Polk, Dallas, Laclede, Texas, Dent, Crawford, Washington, St. Francois, and Perry, and all those to the south of these.

<sup>9/</sup> The counties of Warren, Elk, Clearfield, Indiana, Westmoreland, and Fayette, and all those counties to the west of these.

<sup>10/</sup> Includes Kansas, Nebraska, and the Missouri counties to the north of those listed in footnote 8.

<sup>11/</sup> All counties to the west of Fanin, Hunt, Van Zandt, Henderson, Houston, Cherokee, Nacogdoches, and Shelby.

<sup>12/</sup> Includes Oregon and Washington.

<sup>13/</sup> Weighted average of the information for all selected reporting areas in Federal milk orders.

<sup>14/</sup> This mailbox price is calculated by the Upper Midwest Order Market Administrator's Office and includes information for all milk associated with the order.

The mailbox price is defined as the net price received by dairy farmers for milk, including all payments received for milk sold and deducting costs associated with marketing the milk.

All mailbox prices are reported here at test; there is no adjustment of the price to 3.5% butterfat.

As seen on the map below, the mailbox prices for Minnesota and Wisconsin, along with Michigan, Iowa, the Corn Belt States, Western Texas, New Mexico, Northwest States and California were below the All Federal Order price.

Among these lower-price areas, some showed fluctuations above the monthly All Federal Order price in some months.

Overall, producers in all reporting areas received significantly higher pay prices, on average, in the last three quarters of 2024 in comparison to 2023.

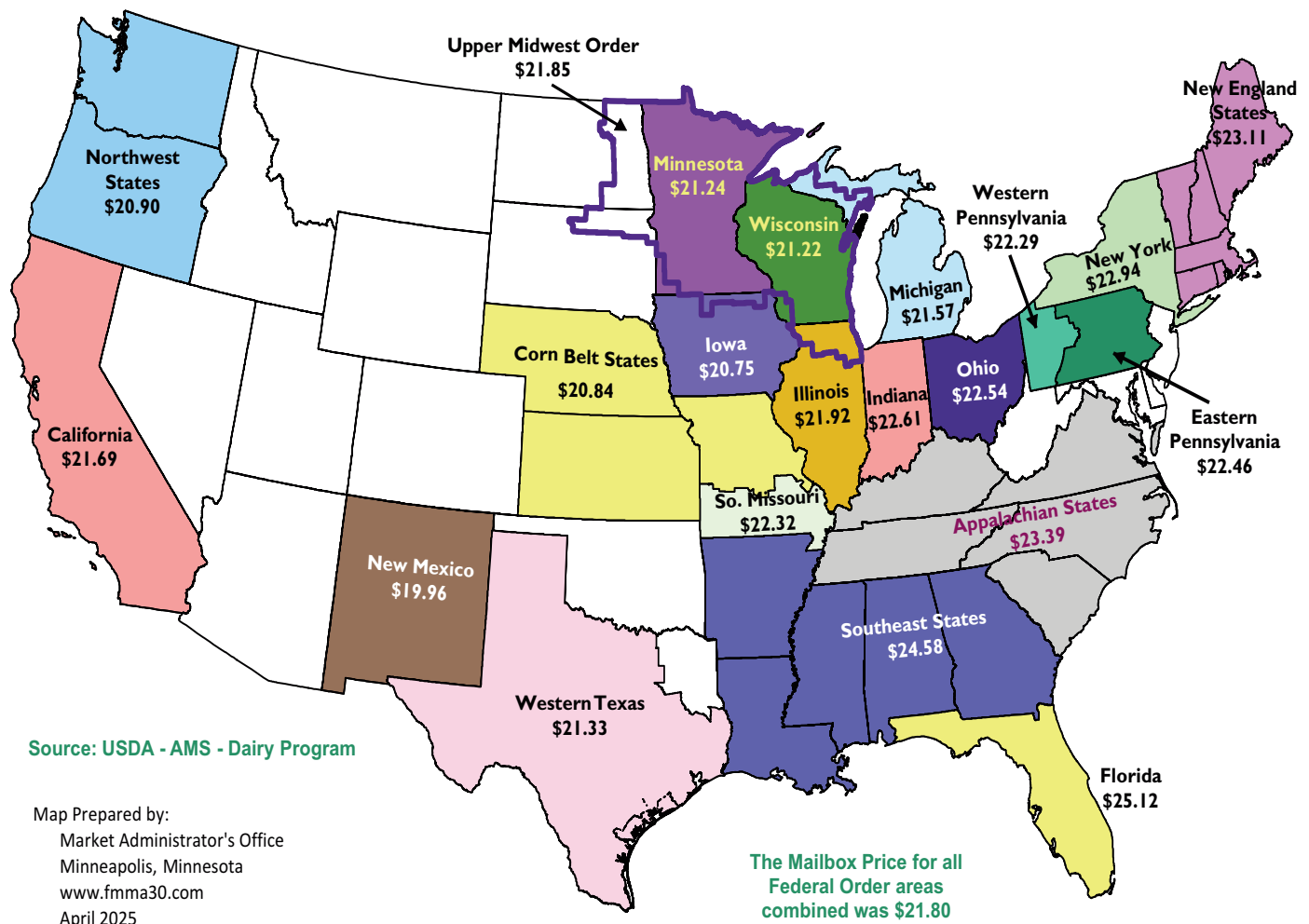
As for Minnesota and Wisconsin, the primary suppliers of milk in FO 30, mailbox prices on average for 2024 were up \$2.40 and \$2.12 per cwt., respectively, from 2023.

The Upper Midwest Order average mailbox price was \$0.05 above the All Federal Order price in 2024, and \$2.21 above its own 2023 Order price. Its monthly prices were above the corresponding monthly All Federal Order prices in August - October and December 2024.

**Table 2 - Mailbox Price by Year**

Year	All Market Mailbox Price	Difference from Previous Year
2024	\$21.80	\$2.12
2023	\$19.68	(\$4.96)
2022	\$24.64	\$6.95
2021	\$17.69	\$0.73
2020	\$16.96	(\$0.94)
2019	\$17.90	\$2.17
2018	\$15.73	(\$1.58)
2017	\$17.31	\$1.36
2016	\$15.95	(\$1.07)
2015	\$17.02	(\$7.02)
2014	\$24.04	\$3.98

## Mailbox Milk Prices for Selected Reporting Areas in Federal Milk Orders -- 2024 Averages



## Computation of Producer Price Differential - March 2025

		Utilization Percentage	Product Pounds	Component Pounds	Rate	Value
<b>Class I</b>	Differential Value					\$ 2,614,021.96
	Product	5.8%	152,611,395			
	Skim Milk			149,591,064	\$ 11.45	17,128,176.83
	Butterfat			3,020,331	2.8484	8,603,110.83
<b>Class II</b>	Product	1.2%	31,029,339			
	Nonfat Solids			2,442,030	1.2567	3,068,899.10
	Butterfat			5,354,121	2.6312	14,087,763.18
<b>Class III</b>	Product	87.6%	2,300,695,712			
	Protein			76,649,216	2.4606	188,603,060.90
	Other Solids			133,904,757	0.3647	48,835,064.90
	Butterfat			93,327,064	2.6242	244,908,881.35
<b>Class IV</b>	Product	5.4%	143,043,976			
	Nonfat Solids			12,322,645	1.0393	12,806,924.94
	Butterfat			14,000,422	2.6242	36,739,907.41
SCC Adjustment (Class II, III, and IV)						4,426,535.11
<b>Total Producer Milk *</b>			<b>2,627,380,422</b>			<b>\$ 581,822,346.51</b>
Add:	Overage					94,993.17
	Inventory Reclassified					(8,750.07)
	Other Source Milk \$.60(h)					0.00
	Other Source Milk \$.60(i)					0.00
Subtract:	Transportation Credit					6,584.79
	Assembly Credit					121,410.88
	Credit for Reconstituted FMP					0.00
	Producer Milk Protein					214,589,108.08
Producer Milk Other Solids						55,568,272.25
	Producer Milk Butterfat					303,625,025.70
	Producer Milk SCC Adjustment					4,701,902.83
Total Milk and Value			2,627,380,422			\$ 3,296,285.08
Add:	Location Adjustment -- Producer and Unregulated Supply Plant Milk					2,054,529.24
	One-Half Unobligated Balance Producer Settlement Fund					1,037,236.46
Total Value					0.243134	\$ 6,388,050.78
Subtract: Producer Settlement Fund Reserve					0.043134	1,133,289.94
<b>Producer Price Differential **</b>					<b>\$ 0.20</b>	<b>\$ 5,254,760.84</b>

\* An estimated 1.3 billion pounds of milk was not pooled.

\*\* Producer Price Differential is dollars per cwt. at the Base Zone of Cook County, Illinois.

## Upper Midwest Pool Statistics - March 2025

Market Class I Differential Rate	Pool Plants	Received at Pool Plants	Diverted to Pool and Nonpool Plants	Total	Location Adjustment to Producers	Class I Differential to Handlers	
Cwt.	Number	Pounds	Pounds	Pounds	Value	Pounds	Value
\$1.80*	3	13,356,115	142,494,014	155,850,129	\$ 215,104	11,284,977	\$ 187,957
\$1.75	25	66,881,041	1,197,329,958	1,264,210,999	632,105	47,030,853	823,040
\$1.70	21	125,363,766	1,081,955,528	1,207,319,294	1,207,319	94,295,565	1,603,025
Total	49	205,600,922	2,421,779,500	2,627,380,422	\$2,054,529	152,611,395	\$2,614,022

\* Includes restricted data from the \$1.65 zones.

# Utilization and Classification of Milk

	March 2025		February 2025	March 2024
	Product Pounds	Butterfat Pounds	Product Pounds	Product Pounds
<b>Class I Utilization:</b>				
Packaged Disposition				
Milk	40,098,655	1,335,086	38,666,784	40,629,289
Flavored Milk	5,536,432	194,312	4,493,835	3,521,260
Reduced Fat Milk	52,218,162	1,034,640	50,707,780	55,198,960
Lowfat Milk	29,849,052	291,547	28,458,139	29,526,626
Fat Free Milk	14,170,522	14,606	13,643,684	15,616,064
Flavored Reduced and Fat Free Milk	16,609,921	135,885	17,877,627	17,080,523
Buttermilk	1,686,602	19,324	1,425,120	1,842,743
Total Packaged Disposition	160,169,346	3,025,400	155,272,969	163,415,465
Total Ending Inventory	24,892,980	449,419	27,406,684	15,876,341
Bulk to Nonpool Plants	833,053	36,288	603,633	917,064
Shrinkage	1,844,621	126,010	2,020,227	1,160,967
Total Class I Utilization	187,496,891	3,635,028	185,303,513	181,369,837
Other Order Plants	(7,681,836)	(117,627)	(8,599,673)	(7,442,096)
Beginning Inventory	(27,406,287)	(498,376)	(25,107,570)	(18,110,561)
Reused Products	0	0	0	0
Other Source Milk	(19,355)	(647)	(71,924)	(42,503)
Overage	0	0	(17)	0
Interhandler Adjustment	221,982	1,953	(61,583)	(67,137)
<b>Class I Producer Milk</b>	<b>152,611,395</b>	<b>3,020,331</b>	<b>151,462,746</b>	<b>155,707,540</b>
<b>Class II Utilization:</b>				
Total Class II Utilization	33,997,962	5,450,960	29,821,876	31,228,190
Other Order Plants	(255,160)	(5,104)	(319,727)	(5,657)
Beginning Inventory	(60,141)	(60,141)	(1,425,406)	(286,320)
Reused Products	(2,623,316)	(1,588)	(1,927,028)	(2,421,008)
Other Source Milk	(30,006)	(30,006)	(3,610)	(17,694)
Overage	0	0	0	0
<b>Class II Producer Milk</b>	<b>31,029,339</b>	<b>5,354,121</b>	<b>26,146,105</b>	<b>28,497,511</b>
<b>Class III Utilization:</b>				
Total Class III Utilization	2,301,769,497	93,370,242	1,882,846,885	2,511,077,455
Other Order Plants	(65,331)	(3,082)	0	(577,416)
Beginning Inventory	(396,665)	(9,924)	(848,127)	(2,744,865)
Reused Products	0	0	0	0
Other Source Milk	(207,245)	(9,665)	(195,226)	(2,036,770)
Overage	(404,544)	(20,507)	(46,363)	(286,520)
<b>Class III Producer Milk</b>	<b>2,300,695,712</b>	<b>93,327,064</b>	<b>1,881,757,169</b>	<b>2,505,431,884</b>
<b>Class IV Utilization:</b>				
Total Class IV Utilization	322,029,576	22,576,776	288,110,381	201,015,909
Other Order Plants	(1,425,882)	(58,013)	(796,774)	(623,084)
Beginning Inventory	(8,455,864)	(455,342)	(11,015,752)	(7,981,376)
Reused Products	0	0	0	0
Other Source Milk	(179,077,102)	(8,062,557)	(161,743,911)	(169,539,740)
Overage	(26,752)	(442)	(8,480)	(9,052)
<b>Class IV Producer Milk</b>	<b>143,043,976</b>	<b>14,000,422</b>	<b>114,545,464</b>	<b>22,862,657</b>
<b>Total Producer Milk -- All Classes</b>	<b>2,627,380,422</b>	<b>115,701,938</b>	<b>2,173,911,484</b>	<b>2,712,499,592</b>

-- Restricted Information



## Commodity Prices

Month/Year	Weighted Monthly Average Prices						Weighted Two-Week Average Prices					
	Cheddar Cheese			Nonfat			Cheddar Cheese			Nonfat		
	Blocks	Barrels	Average	Butter	Dry Milk	Dry Whey	Blocks	Barrels	Average	Butter	Dry Milk	Dry Whey
<i>Dollars per Pound</i>												
Mar 2024	1.5730	1.6085	1.6082	2.8457	1.1863	0.4788	1.5980	1.6587	1.6475	2.8422	1.1991	0.4842
Apr	1.5170	1.5447	1.5478	2.9220	1.1506	0.4289	1.4873	1.5074	1.5159	2.8927	1.1768	0.4446
May	1.8062	1.8952	1.8706	3.0316	1.1422	0.4108	1.7705	1.8550	1.8305	3.0214	1.1557	0.4091
Jun	1.9154	2.0345	1.9962	3.0983	1.1770	0.4249	1.9075	2.0412	1.9957	3.0862	1.1705	0.4148
Jul	1.9458	1.9635	1.9717	3.1211	1.1930	0.4487	1.9272	1.9758	1.9738	3.1337	1.2007	0.4416
Aug	1.9812	2.0573	2.0399	3.1139	1.2268	0.4864	1.9548	2.0030	1.9985	3.1061	1.2212	0.4848
Sep	2.2013	2.3319	2.2882	3.1537	1.2899	0.5321	2.1394	2.2646	2.2225	3.1745	1.2745	0.5235
Oct	2.1605	2.2760	2.2400	2.7191	1.3423	0.5588	2.1690	2.2678	2.2401	2.6840	1.3427	0.5636
Nov	1.9096	1.8973	1.9198	2.7002	1.3773	0.5922	1.9281	1.9290	1.9449	2.7265	1.3771	0.5893
Dec	1.7583	1.7326	1.7608	2.5748	1.3952	0.6353	1.7565	1.7261	1.7563	2.5916	1.3966	0.6207
Jan 2025	1.8954	1.8477	1.8851	2.6042	1.3801	0.7218	1.9004	1.8376	1.8803	2.6049	1.3907	0.7194
Feb	1.9158	1.8707	1.9077	2.4990	1.3347	0.6650	1.9093	1.8801	1.9097	2.5236	1.3587	0.6986
Mar	1.8420	1.7732	1.8215	2.3385	1.2176	0.5532	1.8977	1.8250	1.8751	2.3419	1.2461	0.5701
Apr							1.6978	1.7115	1.7230	2.3549	1.1801	0.4982

Month/Year	Chicago Mercantile Exchange					USDA Dairy Market News				
	Butter	Cheddar Cheese		NFDM	Whey	NFDM Low/Medium Heat		Whey Powder		
	Grade AA	Blocks	Barrels	Grade A	Extra Grade	Central & East	West	Northeast	Central	West
<i>Dollars per Pound</i>										
Mar 2024	2.8220	1.4538	1.4935	1.1473	0.4155	1.1701	1.1812	0.4577	0.4232	0.4965
Apr	2.9406	1.6063	1.6214	1.1272	0.3792	1.1292	1.1389	0.4082	0.3911	0.4753
May	3.0503	1.8753	1.9744	1.1540	0.3950	1.1523	1.1393	0.3972	0.3851	0.4502
Jun	3.0945	1.8941	1.9516	1.1916	0.4696	1.1924	1.1796	0.4257	0.4262	0.4611
Jul	3.1103	1.9126	1.9239	1.1981	0.5223	1.1960	1.1840	0.4614	0.4645	0.4841
Aug	3.1431	2.0298	2.1235	1.2607	0.5714	1.2319	1.2385	0.5075	0.5183	0.5339
Sep	3.0261	2.2333	2.4125	1.3763	0.5888	1.3381	1.3588	0.5474	0.5479	0.5508
Oct	2.6736	1.9290	1.9387	1.3628	0.6017	1.3520	1.3562	0.5681	0.5667	0.5689
Nov	2.6003	1.7184	1.7237	1.3905	0.6408	1.3772	1.3822	0.5909	0.5821	0.5884
Dec	2.5339	1.7246	1.7945	1.3824	0.7387	1.4038	1.3820	0.6544	0.6820	0.6924
Jan 2025	2.5400	1.8782	1.8523	1.3592	0.7199	1.3843	1.3665	0.6829	0.7131	0.7362
Feb	2.3932	1.8845	1.8038	1.2772	0.5629	1.2913	1.2985	0.6288	0.5955	0.6598
Mar	2.3177	1.6438	1.6432	1.1593	0.4863	1.1971	1.1863	0.5449	0.4693	0.5685

## Market Statistics

Month/Year	Distributing Plants	Supply Plants	Coop .9(c) Handlers	Producers	Total Producer Milk	Est. Average Daily Delivery Per Producer	Class I Utilization	Butterfat Test	Protein Test	Other Solids Test	Weighted Average SCC
					<i>Mil. lbs.</i>	<i>Pounds</i>	<i>Percent</i>	<i>Percent</i>	<i>Percent</i>	<i>Percent</i>	<i>(000)</i>
Jan 2024	9	41	9	5,221	2,629	16,245	6.5	4.37	3.32	5.80	162
Feb	9	41	9	5,226	2,544	16,785	6.0	4.32	3.30	5.79	161
Mar	9	41	9	5,248	2,712	16,673	5.7	4.32	3.29	5.78	159
Apr	9	41	9	5,653	2,701	15,937	6.0	4.29	3.29	5.77	162
May	9	41	9	5,139	2,755	17,290	5.8	4.21	3.23	5.80	168
Jun	10	40	9	4,941	2,570	17,341	5.5	4.16	3.18	5.80	175
Jul	9	38	8	4,951	2,670	17,393	5.7	4.13	3.16	5.80	191
Aug	9	39	10	4,832	2,561	17,097	6.2	4.16	3.18	5.79	207
Sep	9	39	10	3,859	1,628	14,062	9.6	4.18	3.21	5.79	184
Oct	9	39	11	3,655	1,619	14,292	10.3	4.30	3.32	5.79	170
Nov	10	39	11	3,619	1,818	16,743	9.0	4.39	3.35	5.78	158
Dec	10	39	10	4,003	2,078	16,744	7.9	4.47	3.37	5.79	155
Jan 2025	11	38	11	4,115	2,226	17,453	7.8	4.48	3.37	5.79	153
Feb	11	38	10	4,207	2,174	18,455	7.0	4.47	3.36	5.80	153
Mar	11	38	10		2,627		5.8	4.40	3.32	5.80	153

## Class Prices

Month/Year	Class I Price Mover			Class I Price at Cook County, IL			Class II Price			
	Butterfat	Skim Milk	3.50%	Butterfat	Skim Milk	3.50%	Butterfat	Nonfat Solids	Skim Milk	3.50%
	<i>lb.</i>	<i>cwt.</i>	<i>cwt.</i>	<i>lb.</i>	<i>cwt.</i>	<i>cwt.</i>	<i>lb.</i>	<i>lb.</i>	<i>cwt.</i>	<i>cwt.</i>
Mar 2024	3.1269	8.14	18.80	3.1449	9.94	20.60	3.2455	1.1233	10.11	21.12
Apr	3.2342	8.15	19.18	3.2522	9.95	20.98	3.3379	1.0989	9.89	21.23
May	3.2954	7.18	18.46	3.3134	8.98	20.26	3.4706	1.0767	9.69	21.50
Jun	3.4512	8.29	20.08	3.4692	10.09	21.88	3.5514	1.0556	9.50	21.60
Jul	3.5297	9.07	21.11	3.5477	10.87	22.91	3.5790	1.0700	9.63	21.82
Aug	3.5872	9.08	21.32	3.6052	10.88	23.12	3.5702	1.1000	9.90	22.05
Sep	3.5538	9.49	21.60	3.5718	11.29	23.40	3.6184	1.1211	10.09	22.40
Oct	3.6366	10.82	23.17	3.6546	12.62	24.97	3.0921	1.1733	10.56	21.01
Nov	3.0426	12.31	22.53	3.0606	14.11	24.33	3.0693	1.2411	11.17	21.52
Dec	3.0941	10.98	21.43	3.1121	12.78	23.23	2.9174	1.2744	11.47	21.28
Jan 2025	2.9307	10.49	20.38	2.9487	12.29	22.18	2.9530	1.2944	11.65	21.58
Feb	2.9468	11.35	21.27	2.9648	13.15	23.07	2.8256	1.2889	11.60	21.08
Mar	2.8484	11.45	21.02	2.8664	13.25	22.82	2.6312	1.2567	11.31	20.12
Apr	2.6284	10.75	19.57	2.6464	12.55	21.37		1.1456	10.31	
May	2.6441	9.45	18.37	2.6621	11.25	20.17		1.0800	9.72	

Month/Year	Class III Price					Class IV Price			
	Butterfat	Protein	Other Solids	Skim Milk	3.50%	Butterfat	Nonfat Solids	Skim Milk	3.50%
	<i>lb.</i>	<i>lb.</i>	<i>lb.</i>	<i>cwt.</i>	<i>cwt.</i>	<i>lb.</i>	<i>lb.</i>	<i>cwt.</i>	<i>cwt.</i>
Mar 2024	3.2385	1.1265	0.2881	5.19	16.34	3.2385	1.0083	9.07	20.09
Apr	3.3309	0.8345	0.2367	3.98	15.50	3.3309	0.9730	8.76	20.11
May	3.4636	1.7349	0.2181	6.66	18.55	3.4636	0.9647	8.68	20.50
Jun	3.5444	2.0546	0.2326	7.74	19.87	3.5444	0.9991	8.99	21.08
Jul	3.5720	1.9466	0.2571	7.55	19.79	3.5720	1.0149	9.13	21.31
Aug	3.5632	2.1756	0.2959	8.49	20.66	3.5632	1.0484	9.44	21.58
Sep	3.6114	2.9249	0.3430	11.09	23.34	3.6114	1.1109	10.00	22.29
Oct	3.0851	3.3238	0.3705	12.49	22.85	3.0851	1.1628	10.47	20.90
Nov	3.0623	2.3160	0.4049	9.57	19.95	3.0623	1.1974	10.78	21.12
Dec	2.9104	1.9637	0.4493	8.74	18.62	2.9104	1.2151	10.94	20.74
Jan 2025	2.9460	2.3267	0.5384	10.39	20.34	2.9460	1.2002	10.80	20.73
Feb	2.8186	2.5337	0.4799	10.69	20.18	2.8186	1.1552	10.40	19.90
Mar	2.6242	2.4606	0.3647	9.78	18.62	2.6242	1.0393	9.35	18.21

## Producer Prices

Month/Year	Producer Price Differential	Statistical Uniform Price (at 3.50%)	Butterfat Price	Protein Price	Other Solids Price	SCC Adjustment Rate	Producer Mailbox Price (at test)
	<i>\$ per cwt.</i>	<i>\$ per cwt.</i>	<i>\$ per lb.</i>	<i>\$ per lb.</i>	<i>\$ per lb.</i>	<i>\$ per cwt.</i>	<i>\$ per cwt.</i>
Jan 2024	0.42	15.59	2.9765	1.1265	0.2417	0.00076	18.03
Feb	0.32	16.40	3.1031	1.2255	0.2738	0.00080	18.78
Mar	0.36	16.70	3.2385	1.1265	0.2881	0.00080	18.86
Apr	0.45	15.95	3.3309	0.8345	0.2367	0.00077	18.47
May	0.19	18.74	3.4636	1.7349	0.2181	0.00094	21.28
Jun	0.18	20.05	3.5444	2.0546	0.2326	0.00100	21.79
Jul	0.25	20.04	3.5720	1.9466	0.2571	0.00099	21.63
Aug	0.20	20.86	3.5632	2.1756	0.2959	0.00102	23.08
Sep	(0.24)	23.10	3.6114	2.9249	0.3430	0.00114	25.51
Oct	(0.47)	22.38	3.0851	3.3238	0.3705	0.00112	24.91
Nov	0.38	20.33	3.0623	2.3160	0.4049	0.00096	23.04
Dec	0.36	18.98	2.9104	1.9637	0.4493	0.00088	23.51
Jan 2025	0.13	20.47	2.9460	2.3267	0.5384	0.00094	23.77
Feb	0.13	20.31	2.8186	2.5337	0.4799	0.00095	23.43
Mar	0.20	18.82	2.6242	2.4606	0.3647	0.00091	

# Summary of Federal Order Data - March 2025

Federal Order Number / Name	Producer Deliveries	Class I Producer Receipts	Class I Utilization	Class I Price	Producer Price Differential	Uniform or Statistical Uniform Price at 3.5% Butterfat		
						FOB Market	FOB Cook Cty. Illinois	Change From Previous Year
	Thousand Pounds		Percent	Dollars per Cwt.			Dollars per Cwt.	
1 Northeast	2,398,071	656,312	27.4	\$ 24.27	\$1.94	\$ 20.56	\$ 19.11	\$0.38
5 Appalachian	450,489	299,210	66.4	24.42	n/a	22.60	21.00	1.00
6 Florida	221,544	171,376	77.4	26.42	n/a	24.66	21.06	0.91
7 Southeast	303,471	208,590	68.7	24.82	n/a	23.18	21.18	1.11
<b>30 Upper Midwest</b>	<b>2,627,380</b>	<b>152,611</b>	<b>5.8</b>	<b>22.82</b>	<b>0.20</b>	<b>18.82</b>	<b>18.82</b>	<b>2.12</b>
32 Central	1,400,503	344,036	24.6	23.02	0.45	19.07	18.87	1.05
33 Mideast	1,775,235	588,098	33.1	23.02	1.10	19.72	19.52	1.08
51 California	3,081,370	393,087	12.8	23.12	0.46	19.08	18.78	1.31
124 Pacific Northwest	692,477	116,893	16.9	22.92	0.34	18.96	18.86	0.55
126 Southwest	1,429,604	320,867	22.4	24.02	1.20	19.82	18.62	1.34
131 Arizona	427,121	106,574	25.0	23.37	n/a	19.96	19.41	0.33

**All Market Average or Total \* 14,807,265 3,357,652 22.7**

n/a = Not applicable.

\* May not add due to rounding.

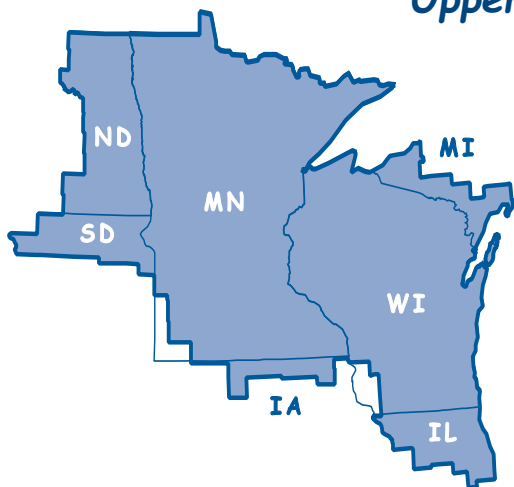
In accordance with Federal civil rights law and U.S. Department of Agriculture (USDA) civil rights regulations and policies, the USDA, its Agencies, offices, and employees, and institutions participating in or administering USDA programs are prohibited from discriminating based on race, color, national origin, religion, sex, disability, age, marital status, family/parental status, income derived from a public assistance program, political beliefs, or reprisal or retaliation for prior civil rights activity, in any program or activity conducted or funded by USDA (not all bases apply to all programs). Remedies and complaint filing deadlines vary by program or incident.

Persons with disabilities who require alternative means of communication for program information (e.g., Braille, large print, audiotape, American Sign Language, etc.) should contact the responsible Agency or USDA's TARGET Center at (202) 720-2600 (voice and TTY) or contact USDA through the Federal Relay Service at 711. Additionally, program information may be made available in languages other than English.

To file a program discrimination complaint, complete the USDA Program Discrimination Complaint Form, AD-3027, found online at [How to File a Program Discrimination Complaint](#) and at any USDA office or write a letter addressed to USDA and provide in the letter all of the information requested in the form. To request a copy of the complaint form, call (866) 632-9992. Submit your completed form or letter to USDA by: (1) mail: U.S. Department of Agriculture, Office of the Assistant Secretary for Civil Rights, 1400 Independence Avenue, SW, Washington, D.C. 20250-9410; (2) fax: (202) 690-7442; or (3) email: [program.intake@usda.gov](mailto:program.intake@usda.gov).

USDA is an equal opportunity provider, employer, and lender.

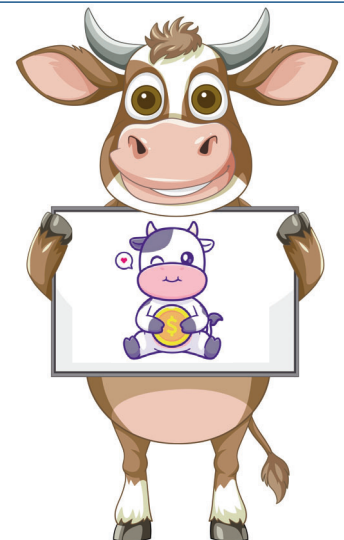
## Upper Midwest Marketing Area F.O. 30



Phone: (952) 831-5292

Fax: (952) 831-8249

Website: [www.fmma30.com](http://www.fmma30.com)



Cow Holding Blank Sign by brgfx on Freepik

Cute Cow Holding Gold Coin by catalyststuff on Freepik