



UPPER MIDWEST DAIRY NEWS

Victor J. Halverson, Market Administrator

Volume 23, Issue 5

Upper Midwest Marketing Area, Federal Order No. 30

May 2022

Inside This Issue:

2021 Milk Sales in FO 30 2

2020 Agricultural Exports..... 3

Computation of Producer Price Differential 4

Utilization and Classification ... 5

Commodity Prices and Market Statistics 6

Class Prices and Producer Prices 7

CME Cheese & Butter Prices Up in May

Prices for cheese and butter on the Chicago Mercantile Exchange (CME) on May 19 were above April and sharply higher than last year.

The CME barrel price on May 19 for cheddar cheese was \$2.40 per pound, up ½¢ from April 19 and 77½¢ above last year.

Meanwhile, the 40-pound block price for cheddar cheese on May 19 was \$2.38 per pound, up 2¢ from last month and 77¾¢ above a year ago.

The CME butter price on May 19 was \$2.82¾ per pound, up 11¢ from last month and 97¼¢ above last year.

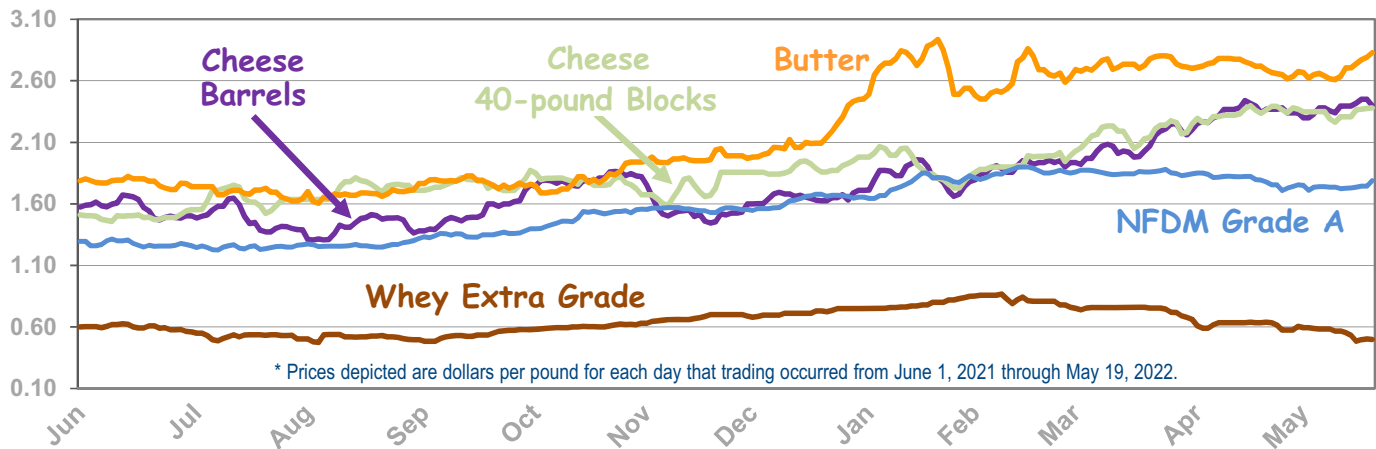
The May 19 price for nonfat dry milk on the CME was \$1.79 per pound, down ¾¢ from April 19, but 48¾¢ above last year.

The CME whey price on May 19 was \$0.50 per pound, down 13½¢ from last month and 14¢ below last year.

The Federal order Class III price for April is \$24.42, up \$1.97 from March and \$6.75 above a year ago. The price in April is the highest Class III price in nearly two years and the record high is \$24.60 set in 2014.

The May 19 CME Class III futures market has the price going above \$25 for May, before slowly declining for the next several months, ending the year at about \$22.

Chicago Mercantile Exchange - Selected Dairy Commodity Prices *



Pool Summary

- In April, producer milk was 2.3 billion pounds, down 12% daily from March, but more than 150% above April 2021. The changes reflect differences in the estimated volume of milk not pooled.
- Class I use was 201 million pounds, down 2.1% daily from March and 2.6% below last year. In April, Class I use was 8.6% of total producer milk.
- The April 2022 Producer Price Differential (PPD) was \$0.13 per cwt.
- The F.O. 30 Statistical Uniform Price in April was \$24.55 per cwt., up \$1.89 from March and \$7.90 above last year.
- Market statistics for April are shown on Pages 4 and 5.

April 2022 Producer Milk by Class

	Percent	Product Pounds	Price \$/cwt.
Class I	8.6	201,453,596	26.18
Class II	1.5	35,260,796	25.71
Class III	89.1	2,093,653,363	24.42
Class IV	0.8	19,267,774	25.31
Total		2,349,635,529	

2021 Fluid Milk Sales in FO 30 Continue Down

Sales of fluid milk products (FMP) by bottling plants regulated on the Upper Midwest Order (UMO) for 2000 through 2021 are discussed in this article and depicted graphically. In addition to examining total sales during the period, sales by butterfat level are also examined.

The numbers used here do not include sales in the UMO by plants regulated on other Federal orders.

Total Annual Sales

During 2021, there were 2.5 billion pounds of FMP sold by pool handlers, down nearly 7% from 2020. Monthly volumes ranged from 186 million pounds in June to 226 million pounds in December.

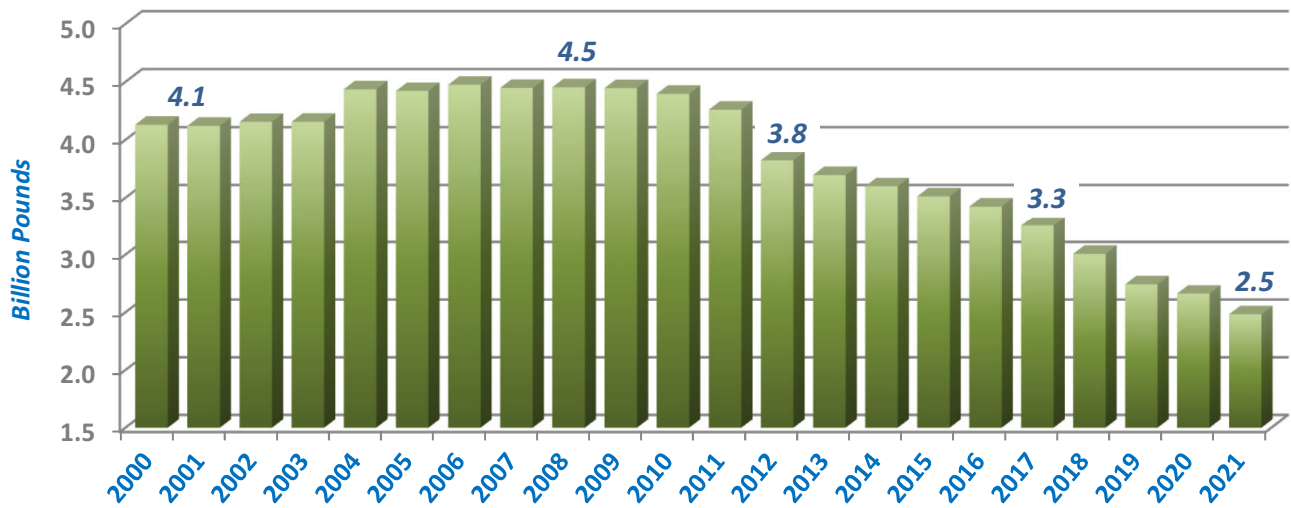
Annual FMP sales in 2000 were 4.1 billion pounds, increased to peak in 2008 at 4.5 billion pounds, and have declined every year since.

Sales by Product

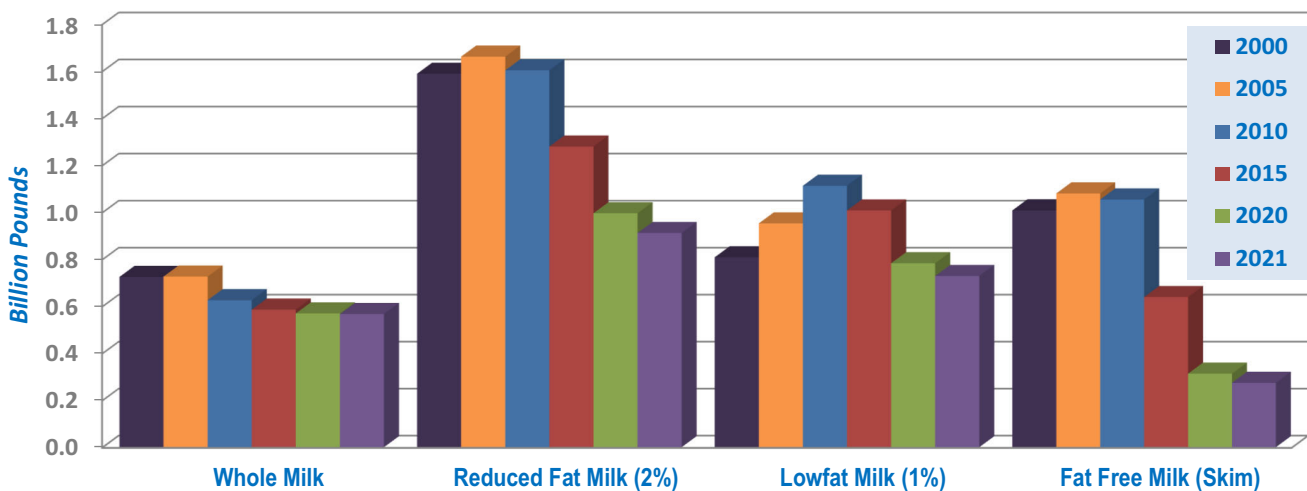
Fluid sales by product have also fluctuated during the last 22 years. However, reduced fat milk products have maintained the largest share, peaking at 1.7 billion pounds in 2008 before falling off to less than 0.9 billion pounds in 2021.

Since 2016, the skim milk volume has been the lowest, falling below whole milk sales, which have been relatively flat during the period.

Total Fluid Milk Sales in FO 30 for 2000 through 2021



FO 30 Fluid Milk Sales by Product for Selected Years



U.S. Agricultural Exports Supported More than One Million Jobs in 2020

The benefits of agricultural exports to the U.S. economy far exceed the value of shipments alone. The production, processing, storage, transportation, and marketing of farm and food products bound for the export market support many full-time jobs throughout the United States.

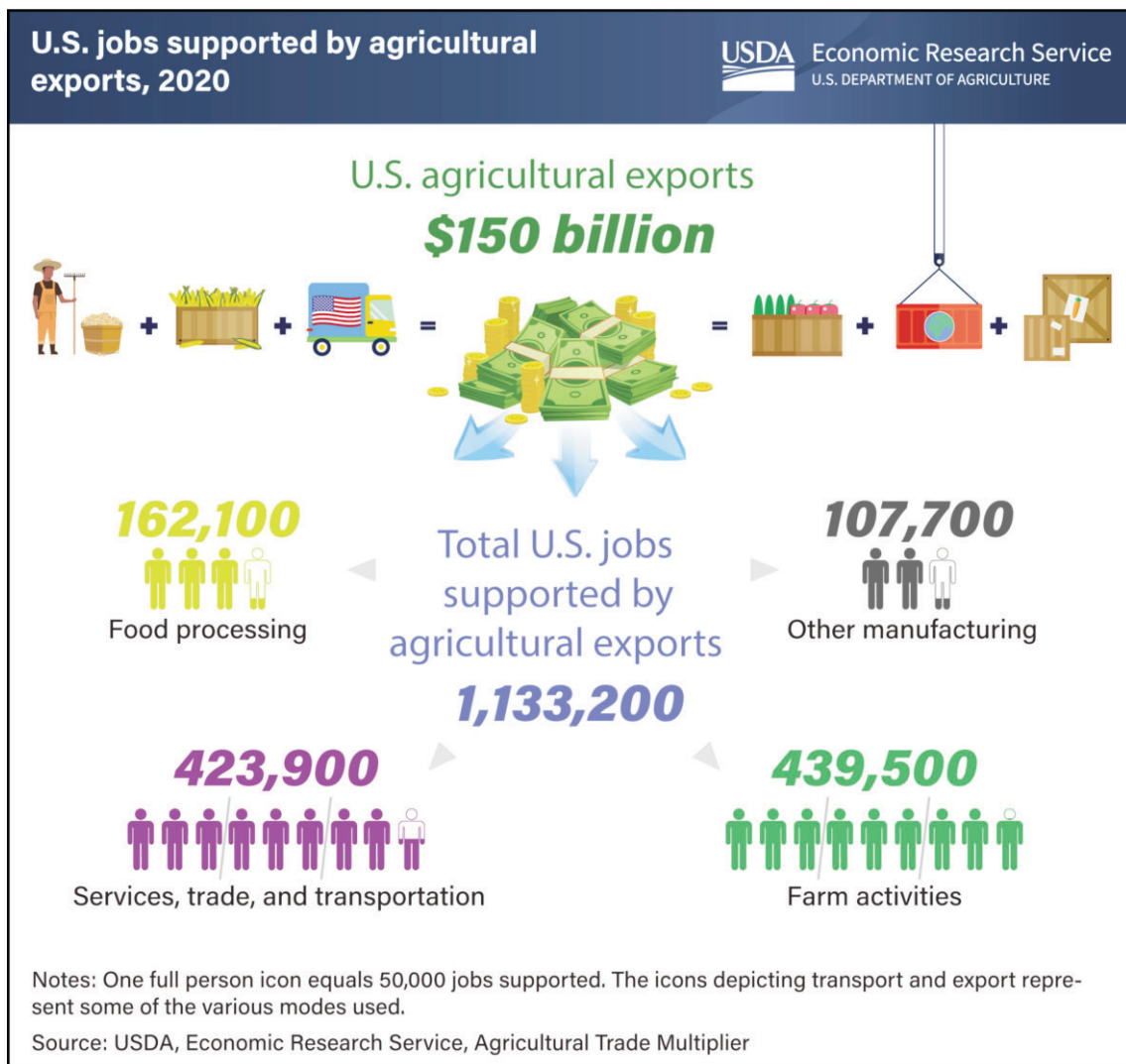
Related job statistics are estimated annually by USDA's Economic Research Service (ERS) by measuring the employment and output effects of trade in farm and food products.

In 2020, U.S. agricultural exports supported the equivalent of more than 1.13 million jobs on and off the farm. With U.S. agricultural exports valued at more than \$150 billion in 2020, every \$1 billion of exports is estimated to create 7,550 jobs.

Farm activities generated by U.S. exports -- mainly crop and livestock production -- supported a total of 439,500 jobs. These jobs included labor provided by farm operators and their family members, hired farmworkers, and contract workers.

Off the farm, exports supported 423,900 total jobs in the services, trade, and transportation industries. Food-processing activities created 162,100 jobs, while other manufacturing activities, such as packaging, canning, and bottling, gave rise to 107,700 jobs. The chart below is drawn from ERS's Agricultural Trade Multiplier, released in February 2022.

Source: ERS Agricultural Trade Multiplier, released in February 2022 (www.ers.usda.gov)



Computation of Producer Price Differential - April 2022

	Utilization Percentage	Product Pounds	Component Pounds	Rate	Value
Class I Differential Value					\$ 3,484,715.71
Product	8.6%	201,453,596			
Skim Milk			197,784,690	\$13.98	27,650,299.67
Butterfat			3,668,906	3.1098	11,409,563.87
Class II Product	1.5%	35,260,796			
Nonfat Solids			2,779,818	1.6900	4,697,892.42
Butterfat			5,475,774	3.1531	17,265,663.00
Class III Product	89.1%	2,093,653,363			
Protein			67,335,571	3.4239	230,550,261.57
Other Solids			121,315,911	0.5565	67,512,304.46
Butterfat			81,663,261	3.1461	256,920,785.43
Class IV Product	0.8%	19,267,774			
Nonfat Solids			1,289,996	1.6470	2,124,623.42
Butterfat			5,432,504	3.1461	17,091,200.83
SCC Adjustment (Class II, III, and IV)					4,847,911.37
Total Producer Milk *		2,349,635,529			\$ 643,555,221.75
Add: Overage					104,748.84
Inventory Reclassified					(6,868.45)
Other Source Milk \$.60(h)					0.00
Other Source Milk \$.60(i)					0.00
Subtract: Transportation Credit					7,967.26
Assembly Credit					160,296.77
Credit for Reconstituted FMP					0.00
Producer Milk Protein					258,227,634.60
Producer Milk Other Solids					75,594,144.72
Producer Milk Butterfat					302,782,064.02
Producer Milk SCC Adjustment					5,293,683.95
Total Milk and Value		2,349,635,529			\$ 1,587,310.82
Add: Location Adjustment -- Producer and Unregulated Supply Plant Milk					1,639,166.83
One-Half Unobligated Balance Producer Settlement Fund					876,959.89
Total Value				0.174641	\$ 4,103,437.54
Subtract: Producer Settlement Fund Reserve				0.044641	1,048,911.35
Producer Price Differential **				\$ 0.13	\$ 3,054,526.19

* An estimated 1.5 billion pounds of milk was not pooled.

** Producer Price Differential is dollars per cwt. at the Base Zone of Cook County, Illinois.

Upper Midwest Pool Statistics - April 2022

Market Class I Differential Rate	Pool Plants	Received at Pool Plants	Diverted to Pool and Nonpool Plants	Total	Location Adjustment to Producers	Class I Differential to Handlers
<i>Cwt.</i>	<i>Number</i>	<i>Pounds</i>	<i>Pounds</i>	<i>Pounds</i>	<i>Value</i>	<i>Pounds</i> <i>Value</i>
\$1.80	3	42,024,067	3,677,413	45,701,480	\$ 0	34,096,900 \$ 613,744
\$1.75	25	120,856,999	1,230,260,381	1,351,117,380	675,559	61,603,588 1,078,063
\$1.70 ***	25	113,091,832	839,724,837	952,816,669	963,608	105,753,108 1,792,909
Total	53	275,972,898	2,073,662,631	2,349,635,529	\$1,639,167	201,453,596 \$3,484,716

*** Includes restricted data from the \$2.00 and \$1.65 zones.

Utilization and Classification of Milk

	April 2022		March 2022	April 2021
	Product Pounds	Butterfat Pounds	Product Pounds	Product Pounds
Class I Utilization:				
Packaged Disposition				
Milk	43,094,684	1,433,153	44,593,411	42,512,175
Flavored Milk	3,397,320	113,697	3,648,763	3,244,609
Reduced Fat Milk	72,785,052	1,425,061	75,347,646	75,091,283
Lowfat Milk	36,457,885	344,717	38,302,409	38,108,772
Fat Free Milk	22,032,368	25,568	22,950,772	22,879,198
Flavored Reduced and Fat Free Milk	23,514,294	193,044	23,733,887	22,928,001
Buttermilk	1,678,333	18,528	1,952,398	1,722,875
Total Packaged Disposition	202,959,936	3,553,768	210,529,286	206,486,913
Total Ending Inventory	20,666,995	336,187	21,287,473	20,418,998
Bulk to Nonpool Plants	895,307	24,008	1,152,906	1,767,047
Shrinkage	1,189,362	171,863	1,900,514	1,393,505
Total Class I Utilization	225,711,600	4,085,826	234,870,179	230,066,463
Other Order Plants	(2,904,407)	(59,515)	(3,222,180)	(2,020,622)
Beginning Inventory	(21,285,650)	(356,383)	(19,136,906)	(21,011,892)
Reused Products	0	0	0	0
Other Source Milk	(177,094)	(2,693)	(135,226)	(272,792)
Overage	0	0	0	--
Interhandler Adjustment	109,147	1,671	351,608	41,340
Class I Producer Milk	201,453,596	3,668,906	212,727,475	206,802,497
Class II Utilization:				
Total Class II Utilization	39,283,162	5,600,503	42,609,485	212,446,470
Other Order Plants	0	0	--	--
Beginning Inventory	(607,943)	(92,007)	(3,814,630)	(2,482,264)
Reused Products	(3,414,423)	(32,722)	(5,321,248)	(4,797,909)
Other Source Milk	--	--	(221,965)	--
Overage	--	--	--	--
Class II Producer Milk	35,260,796	5,475,774	33,251,642	205,166,297
Class III Utilization:				
Total Class III Utilization	2,098,871,994	81,827,074	2,504,961,113	356,319,830
Other Order Plants	--	--	(1,888,985)	--
Beginning Inventory	(3,573,421)	(92,582)	(6,941,629)	(699,820)
Reused Products	--	--	0	--
Other Source Milk	(1,611,036)	(63,741)	(185,624)	(534,655)
Overage	(34,174)	(7,490)	(175,959)	(115,366)
Class III Producer Milk	2,093,653,363	81,663,261	2,495,768,916	354,969,989
Class IV Utilization:				
Total Class IV Utilization	155,003,299	11,148,739	167,666,656	222,992,429
Other Order Plants	(1,529,342)	(51,050)	(3,717,953)	(3,136,686)
Beginning Inventory	(7,907,533)	(481,412)	(7,606,428)	(12,002,745)
Reused Products	0	0	0	0
Other Source Milk	(126,031,145)	(5,171,179)	(138,289,632)	(47,565,470)
Overage	(267,505)	(12,594)	(460,501)	(106,181)
Class IV Producer Milk	19,267,774	5,432,504	17,592,142	160,181,347
Total Producer Milk -- All Classes	2,349,635,529	96,240,445	2,759,340,175	927,120,130

-- Restricted Information

Commodity Prices

Month/Year	Weighted Monthly Average Prices						Weighted Two-Week Average Prices					
	Cheddar Cheese			Nonfat			Cheddar Cheese			Nonfat		
	Blocks	Barrels	Average	Butter	Dry Milk	Dry Whey	Blocks	Barrels	Average	Butter	Dry Milk	Dry Whey
	<i>Dollars per Pound</i>						<i>Dollars per Pound</i>					
Apr 2021	1.7918	1.6011	1.7106	1.7814	1.1680	0.6135	1.7809	1.5347	1.6728	1.8028	1.1645	0.6082
May	1.8072	1.8035	1.8206	1.8107	1.2392	0.6501	1.8252	1.8330	1.8448	1.7961	1.2247	0.6479
Jun	1.6058	1.6506	1.6439	1.7934	1.2696	0.6437	1.5896	1.6432	1.6323	1.7892	1.2713	0.6400
Jul	1.5948	1.5663	1.5956	1.7401	1.2552	0.6050	1.5614	1.5636	1.5779	1.7446	1.2531	0.6095
Aug	1.6902	1.4371	1.5680	1.6998	1.2660	0.5617	1.6557	1.4376	1.5499	1.7035	1.2622	0.5700
Sep	1.7761	1.4873	1.6411	1.7725	1.2816	0.5336	1.7698	1.4686	1.6242	1.7752	1.2822	0.5310
Oct	1.8070	1.7011	1.7698	1.7746	1.3598	0.5447	1.8028	1.6908	1.7624	1.7436	1.3497	0.5385
Nov	1.7605	1.7272	1.7588	1.9503	1.4769	0.5825	1.7763	1.8025	1.8046	1.9171	1.4612	0.5729
Dec	1.8633	1.6263	1.7542	2.0641	1.5471	0.6391	1.8637	1.6104	1.7516	2.0427	1.5385	0.6316
Jan 2022	1.9787	1.7951	1.8978	2.6130	1.6488	0.7087	1.9512	1.7270	1.8482	2.4454	1.6240	0.6863
Feb	1.9091	1.8746	1.9068	2.6668	1.7284	0.7800	1.9051	1.8478	1.8906	2.6354	1.7062	0.7660
Mar	2.0748	2.0066	2.0548	2.7260	1.7954	0.7943	2.0740	2.0064	2.0537	2.7395	1.7963	0.7922
Apr	2.2759	2.2759	2.2910	2.7694	1.8314	0.7394	2.2512	2.2372	2.2594	2.7622	1.8306	0.7508
May							2.3886	2.4086	2.4153	2.7089	1.8292	0.6844

Month/Year	Chicago Mercantile Exchange					USDA Dairy Market News				
	Butter	Cheddar Cheese		NFDM	Whey	NFDM Low/Medium Heat		Whey Powder		
	Grade AA	Blocks	Barrels	Grade A	Extra Grade	Central & East	West	Northeast	Central	West
	<i>Dollars per Pound</i>									
Apr 2021	1.8267	1.7945	1.7119	1.2368	0.6605	1.2056	1.2067	0.6228	0.6200	0.6407
May	1.8124	1.6778	1.6923	1.3111	0.6395	1.3163	1.3197	0.6356	0.6275	0.6431
Jun	1.7758	1.4978	1.5639	1.2757	0.5976	1.2873	1.2877	0.6193	0.6047	0.6346
Jul	1.6912	1.6370	1.4774	1.2485	0.5263	1.2513	1.2506	0.5835	0.5559	0.5858
Aug	1.6815	1.7217	1.4158	1.2673	0.5160	1.2514	1.2599	0.5544	0.4995	0.5515
Sep	1.7756	1.7601	1.5319	1.3527	0.5376	1.3454	1.3413	0.5320	0.4955	0.5381
Oct	1.8002	1.7798	1.8008	1.4949	0.6040	1.4718	1.4583	0.5513	0.5285	0.5666
Nov	1.9714	1.7408	1.5375	1.5570	0.6749	1.5605	1.5499	0.6134	0.5746	0.6178
Dec	2.1536	1.8930	1.6548	1.6290	0.7205	1.6041	1.5927	0.6484	0.6646	0.6795
Jan 2022	2.7203	1.9065	1.8204	1.7640	0.7855	1.7430	1.7473	0.7078	0.7293	0.7371
Feb	2.6196	1.9379	1.9038	1.8571	0.8218	1.8829	1.8598	0.7872	0.7898	0.7863
Mar	2.7346	2.1699	2.0774	1.8549	0.7420	1.9045	1.8688	0.7944	0.7452	0.7784
Apr	2.7169	2.3399	2.3489	1.7956	0.6174	1.8940	1.8257	0.7257	0.6917	0.7124

Market Statistics

Month/Year	Distributing Plants	Supply Plants	Coop .9(c) Handlers	Producers	Total Producer Milk	Est. Average Daily Delivery Per Producer	Class I Utilization	Butterfat Test	Protein Test	Other Solids Test	Weighted Average SCC
					Mil. lbs.	Pounds	Percent	Percent	Percent	Percent	
										(000)	
Feb 2021	13	43	9	4,019	898	7,707	22.3	4.15	3.24	5.78	167
Mar	14	43	9	4,017	965	7,745	22.7	4.06	3.18	5.79	166
Apr	14	43	9	4,091	927	7,555	22.3	4.01	3.15	5.80	166
May	13	42	9	3,975	939	7,616	21.6	3.98	3.14	5.79	170
Jun	13	41	10	4,595	1,284	9,302	14.6	3.90	3.08	5.79	179
Jul	14	41	10	5,748	1,918	10,765	10.3	3.89	3.08	5.79	193
Aug	12	43	10	6,008	2,077	11,124	9.7	3.89	3.09	5.80	197
Sep	12	43	10	6,418	2,264	11,750	9.2	3.96	3.13	5.80	209
Oct	12	41	10	4,621	1,447	10,091	14.5	4.02	3.16	5.81	178
Nov	12	41	10	5,186	1,923	12,355	11.4	4.21	3.28	5.80	162
Dec	12	41	10	5,424	2,263	13,453	9.8	4.24	3.29	5.79	160
Jan 2022	12	41	11	5,553	2,495	14,489	8.5	4.25	3.30	5.79	165
Feb	13	41	8	5,557	2,390	15,358	8.2	4.23	3.29	5.79	163
Mar	13	41	9		2,759		7.7	4.17	3.25	5.79	159
Apr	12	41	9		2,350		8.6	4.10	3.21	5.78	154

Class Prices

Month/Year	Class I Price Mover			Class I Price at Cook County, IL			Class II Price			
	Butterfat	Skim Milk	3.50%	Butterfat	Skim Milk	3.50%	Butterfat	Nonfat Solids	Skim Milk	3.50%
	<i>lb.</i>	<i>cwt.</i>	<i>cwt.</i>	<i>lb.</i>	<i>cwt.</i>	<i>cwt.</i>	<i>lb.</i>	<i>lb.</i>	<i>cwt.</i>	<i>cwt.</i>
Apr 2021	1.6735	10.00	15.51	1.6915	11.80	17.31	1.9566	1.0033	9.03	15.56
May	1.9755	10.56	17.10	1.9935	12.36	18.90	1.9921	1.0644	9.58	16.22
Jun	1.9674	11.82	18.29	1.9854	13.62	20.09	1.9711	1.1244	10.12	16.66
Jul	1.9590	10.95	17.42	1.9770	12.75	19.22	1.9066	1.1700	10.53	16.83
Aug	1.9050	10.60	16.90	1.9230	12.40	18.70	1.8578	1.1522	10.37	16.51
Sep	1.8553	10.46	16.59	1.8733	12.26	18.39	1.9458	1.1611	10.45	16.89
Oct	1.9421	10.66	17.08	1.9601	12.46	18.88	1.9484	1.1811	10.63	17.08
Nov	1.9038	11.73	17.98	1.9218	13.53	19.78	2.1611	1.2478	11.23	18.40
Dec	2.1139	12.20	19.17	2.1319	14.00	20.97	2.2989	1.3578	12.22	19.84
Jan 2022	2.2660	12.21	19.71	2.2840	14.01	21.51	2.9637	1.4344	12.91	22.83
Feb	2.7537	12.44	21.64	2.7717	14.24	23.44	3.0288	1.5189	13.67	23.79
Mar	2.9838	12.89	22.88	3.0018	14.69	24.68	3.1005	1.6011	14.41	24.76
Apr	3.1098	13.98	24.38	3.1278	15.78	26.18	3.1531	1.6900	15.21	25.71
May	3.1373	14.99	25.45	3.1553	16.79	27.25		1.7244	15.52	

Month/Year	Class III Price					Class IV Price				
	Butterfat	Protein	Other Solids	Skim Milk	3.50%	Butterfat	Nonfat Solids	Skim Milk	3.50%	
	<i>lb.</i>	<i>lb.</i>	<i>lb.</i>	<i>cwt.</i>	<i>cwt.</i>	<i>lb.</i>	<i>lb.</i>	<i>cwt.</i>	<i>cwt.</i>	
Apr 2021	1.9496	2.8136	0.4268	11.24	17.67	1.9496	0.9902	8.91	15.42	
May	1.9851	3.1307	0.4645	12.45	18.96	1.9851	1.0607	9.55	16.16	
Jun	1.9641	2.5834	0.4579	10.71	17.21	1.9641	1.0908	9.82	16.35	
Jul	1.8996	2.4957	0.4181	10.20	16.49	1.8996	1.0765	9.69	16.00	
Aug	1.8508	2.4582	0.3735	9.82	15.95	1.8508	1.0872	9.78	15.92	
Sep	1.9388	2.6010	0.3445	10.10	16.53	1.9388	1.1027	9.92	16.36	
Oct	1.9414	3.0130	0.3560	11.44	17.83	1.9414	1.1801	10.62	17.04	
Nov	2.1541	2.7536	0.3949	10.87	18.03	2.1541	1.2960	11.66	18.79	
Dec	2.2919	2.5937	0.4532	10.71	18.36	2.2919	1.3655	12.29	19.88	
Jan 2022	2.9567	2.3563	0.5249	10.40	20.38	2.9567	1.4662	13.20	23.09	
Feb	3.0218	2.3168	0.5983	10.71	20.91	3.0218	1.5450	13.91	24.00	
Mar	3.0935	2.7182	0.6131	12.04	22.45	3.0935	1.6113	14.50	24.82	
Apr	3.1461	3.4239	0.5565	13.90	24.42	3.1461	1.6470	14.82	25.31	

Producer Prices

Month/Year	Producer Price Differential	Statistical Uniform Price (at 3.50%)	Butterfat Price	Protein Price	Other Solids Price	SCC Adjustment Rate	Producer Mailbox Price (at test)
	<i>\$ per cwt.</i>	<i>\$ per cwt.</i>	<i>\$ per lb.</i>	<i>\$ per lb.</i>	<i>\$ per lb.</i>	<i>\$ per cwt.</i>	<i>\$ per cwt.</i>
	Feb 2021	(0.90)	14.85	1.4376	2.9816	0.3161	0.00080
Mar	(0.51)	15.64	1.7176	2.6954	0.3652	0.00080	17.58
Apr	(1.02)	16.65	1.9496	2.8136	0.4268	0.00086	18.87
May	(1.44)	17.52	1.9851	3.1307	0.4645	0.00091	19.72
Jun	0.17	17.38	1.9641	2.5834	0.4579	0.00082	18.20
Jul	0.25	16.74	1.8996	2.4957	0.4181	0.00080	17.50
Aug	0.27	16.22	1.8508	2.4582	0.3735	0.00078	17.20
Sep	0.18	16.71	1.9388	2.6010	0.3445	0.00082	18.07
Oct	(0.16)	17.67	1.9414	3.0130	0.3560	0.00088	19.43
Nov	0.18	18.21	2.1541	2.7536	0.3949	0.00088	20.57
Dec	0.25	18.61	2.2919	2.5937	0.4532	0.00088	21.28
Jan 2022	0.21	20.59	2.9567	2.3563	0.5249	0.00095	23.36
Feb	0.28	21.19	3.0218	2.3168	0.5983	0.00095	23.85
Mar	0.21	22.66	3.0935	2.7182	0.6131	0.00103	
Apr	0.13	24.55	3.1461	3.4239	0.5565	0.00115	

Summary of Federal Order Data - April 2022

Federal Order Number / Name	Producer Deliveries <i>— Thousand Pounds —</i>	Class I Producer Receipts <i>— Thousand Pounds —</i>	Class I Utilization <i>Percent</i>	Class I Price <i>— Dollars per Cwt. —</i>	Producer Price Differential <i>— Dollars per Cwt. —</i>	Uniform or Statistical Uniform Price at 3.5% Butterfat		
						FOB Market <i>— Dollars per Cwt. —</i>	FOB Cook Cty. Illinois <i>— Dollars per Cwt. —</i>	Change From Previous Year
1 Northeast	2,281,007	670,862	29.4	27.63	\$1.65	\$26.07	\$24.62	\$8.71
5 Appalachian	458,971	313,844	68.4	27.78	n/a	27.17	25.57	8.74
6 Florida	211,518	177,474	83.9	29.78	n/a	29.13	25.53	8.92
7 Southeast	384,625	242,639	63.1	28.18	n/a	27.35	25.35	8.89
30 Upper Midwest	2,349,636	201,454	8.6	26.18	0.13	24.55	24.55	7.90
32 Central	1,302,224	361,043	27.7	26.38	0.23	24.65	24.45	8.77
33 Mideast	1,548,824	531,417	34.3	26.38	0.49	24.91	24.71	8.58
51 California	2,026,643	393,759	19.4	26.48	0.66	25.08	24.78	9.17
124 Pacific Northwest	632,118	133,059	21.0	26.28	0.37	24.79	24.69	8.51
126 Southwest	1,189,925	327,393	27.5	27.38	1.01	25.43	24.23	8.95
131 Arizona	445,154	112,829	25.3	26.73	n/a	25.52	24.97	9.09
All Market Average or Total *	12,830,643	3,465,773	27.0					

n/a = Not applicable.

* May not add due to rounding.

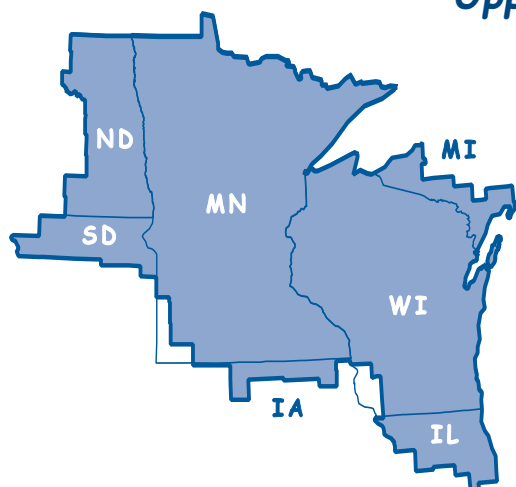
In accordance with Federal civil rights law and U.S. Department of Agriculture (USDA) civil rights regulations and policies, the USDA, its Agencies, offices, and employees, and institutions participating in or administering USDA programs are prohibited from discriminating based on race, color, national origin, religion, sex, gender identity (including gender expression), sexual orientation, disability, age, marital status, family/parental status, income derived from a public assistance program, political beliefs, or reprisal or retaliation for prior civil rights activity, in any program or activity conducted or funded by USDA (not all bases apply to all programs). Remedies and complaint filing deadlines vary by program or incident.

Persons with disabilities who require alternative means of communication for program information (e.g., Braille, large print, audiotape, American Sign Language, etc.) should contact the responsible Agency or USDA's TARGET Center at (202) 720-2600 (voice and TTY) or contact USDA through the Federal Relay Service at (800) 877-8339. Additionally, program information may be made available in languages other than English.

To file a program discrimination complaint, complete the USDA Program Discrimination Complaint Form, AD-3027, online at http://www.ascr.usda.gov/complaint_filing_cust.html and at any USDA office or write a letter addressed to USDA and provide in the letter all of the information requested in the form. To request a copy of the complaint form, call (866) 632-9992. Submit your completed form or letter to USDA by (1) mail: U.S. Department of Agriculture, Office of the Assistant Secretary for Civil Rights, 1400 Independence Avenue, SW, Washington, D.C. 20250-9410; (2) fax: (202) 690-7442; or (3) email: program.intake@usda.gov.

USDA is an equal opportunity provider, employer, and lender.

Upper Midwest Marketing Area F.O. 30



Phone: (952) 831-5292

Fax: (952) 831-8249

Website: www.fmma30.com