



UPPER MIDWEST DAIRY NEWS

H. Paul Kyburz, Market Administrator

Volume 14, Issue 10

Upper Midwest Marketing Area, Federal Order No. 30

October 2013

Inside This Issue:

CME Prices..... 2
Class III Milk Prices 3
Computation of Producer Price Differential 4
Utilization and Classification..... 5
Commodity Prices and Market Statistics..... 6
Class Prices and Producer Prices 7

Expiration of Forward Pricing Program

The American Taxpayer Relief Act of 2012 (ATRA) extended the authorization of the Dairy Forward Pricing Program contained in the Food, Conservation, and Energy Act of 2008 (the 2008 Farm Bill), through September 30, 2013. Beginning October 1, 2013 the authority for the USDA to operate the **Dairy Forward Pricing Program** expired. As of October 1, 2013, Congress had not passed legislation extending the authority for USDA to carry out this program, and USDA cannot make new commitments to the program.

Therefore, proprietary handlers establishing **new** forward contracts on or after October 1, 2013, will not be exempt from paying minimum Federal order prices. Previously

established contracts that extend through September 30, 2015 are not impacted.

With the expiration of the Forward Pricing Program, all producers may still choose to (but are not required to) have forward pricing contracts. For producers being paid by proprietary plants, however, such contracts do not exempt the proprietary plant from its obligation to pay the producer at least Federal order minimums on milk pooled on the order.

Any questions pertaining to the above should be directed to our Minneapolis office at 1-888-301-8224. You may direct them to Victor Halverson at ext. 207, Henry Schaefer at ext. 208, or Paul Kyburz at ext. 206.



Pool Summary

- In September, producer milk totaled 2.7 billion pounds, down 164 million pounds from August, but 675 million pounds above September 2012.
- Class I utilization totaled 298 million pounds, down fractionally on a daily basis from August. Class I usage accounted for 10.8% of producer milk.
- Class III utilization totaled 2.4 billion pounds and accounted for 86.5% of producer milk.
- The September Producer Price Differential (PPD) was \$0.36 per cwt.
- The Statistical Uniform Price was \$18.50 per cwt., up \$0.25 from August, but \$0.36 below September 2012.
- Market statistics for September are shown on Pages 4 and 5.

September 2013 Producer Milk by Class

	Percent	Product Pounds	Price \$/cwt.
Class I	10.8	297,832,295	20.96
Class II	2.0	54,329,021	19.78
Class III	86.5	2,375,412,206	18.14
Class IV	0.7	19,881,235	19.43
Total		2,747,454,757	

CME Prices Fluctuate, But Relatively Unchanged from Prior Month

Cheese prices on the Chicago Mercantile Exchange (CME) dipped down between mid-September and mid-October, but returned to mid-September levels by October 15. Nonfat dry milk (NFDM) prices were up slightly. Butter prices were the opposite of cheese prices over the month, going up, but roughly returning to their mid-September price range by October 15.

There has been a noticeable trend developing with cheese prices dipping 10 to 15 cents, followed by price recovery to pre-dip levels within the following month. NFDM prices continue to rise gradually and steadily, while the butter price has been lower and more volatile than the other dairy commodities this year, particularly since early May.

On October 15, the CME barrel cheddar cheese price closed at \$1.78 per pound, down 1¢ from September 16 and 28¢ below a year earlier. The 40-pound

block price of \$1.82½ on October 15 was up ½¢ from September 16, but 27½¢ below a year ago. The CME butter price closed at \$1.52¼ per pound on October 15, up ¾¢ from last month, but 40¼¢ below last October. On October 15, the Extra Grade NFDM price of \$1.80 was up 2¢ from September 16, while the Grade A price was up 1½¢ to \$1.84½. The NFDM prices are 16½¢ (Extra Grade) and 24¼¢ (Grade A) above a year earlier.

The September Federal Order Class III price of \$18.14 was the same as the January price, and was the second highest Class III price of the year. The Class III price was up \$0.23 from August, but \$0.86 below the September 2012 price. This year's highest Class III price was the May price of \$18.52 per cwt.

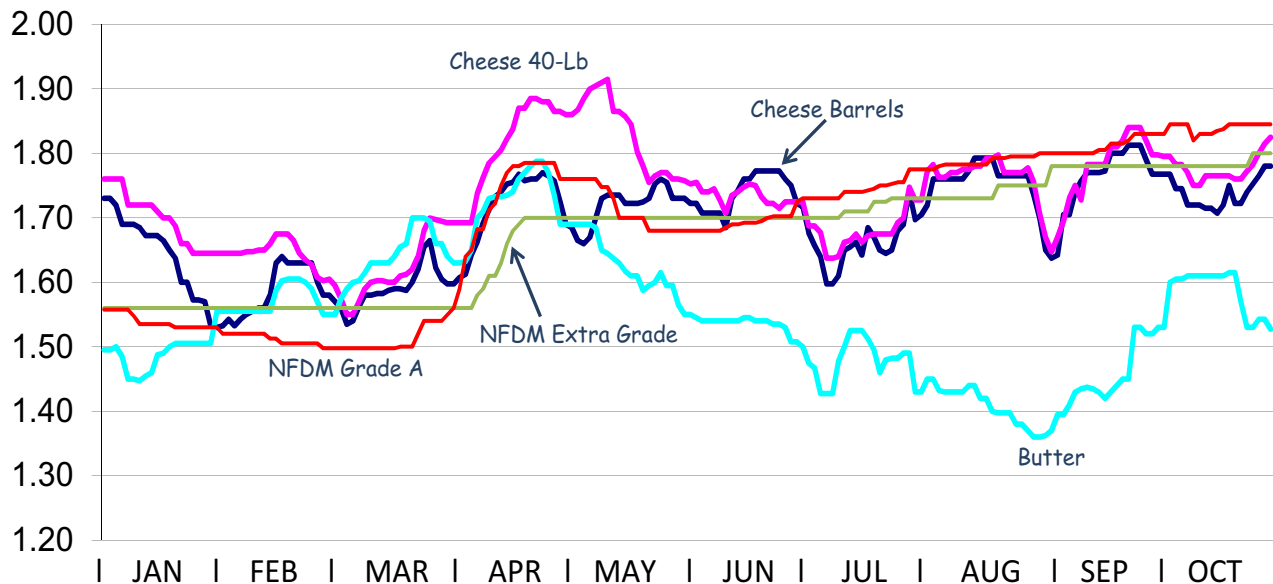
The highest Class III ever was the August 2011 price of \$21.67. Since then, the Class III price has been above \$20.00/cwt just twice (October and

November of 2012) and above \$21.00/cwt just once (October 2012).

The CME Class III futures market as of October 15 shows October 2013 through September 2014 fluctuating between \$16.59 and \$18.20 per cwt. The CME futures market peaks in October at \$18.20 before dropping through the first part of next year until it bottoms in April and climbs upward slowly from that point.



Chicago Mercantile Exchange - Selected Commodity Prices *



*Prices depicted are per pound for each day that trading occurred from January 1 to October 15, 2013.

Class III Milk Prices

Class III milk prices under the Federal milk order system since 2003 are shown in the table below. The prices are also shown graphically below for the last five years, along with the 10-year average for 2003-2012. Class III milk is primarily used to make hard cheese.

The September 2013 Class III price was \$18.14, down \$0.86 from September 2012, but \$2.30 above the 10-year average for the same month for 2003-2012.

Based on estimates of the Class III price through December (based on CME futures), the simple average Class III price for 2013 will be \$17.75, \$0.62 below the record high of \$18.37 set in 2011. In addition, the estimated 2013 Class III price will be \$3.34 above 2010, and \$2.77 above the 10-year average.

Currently, the Chicago Mercantile Exchange (CME) has the Class III futures for 2014 ranging from \$16.59 to \$17.11.

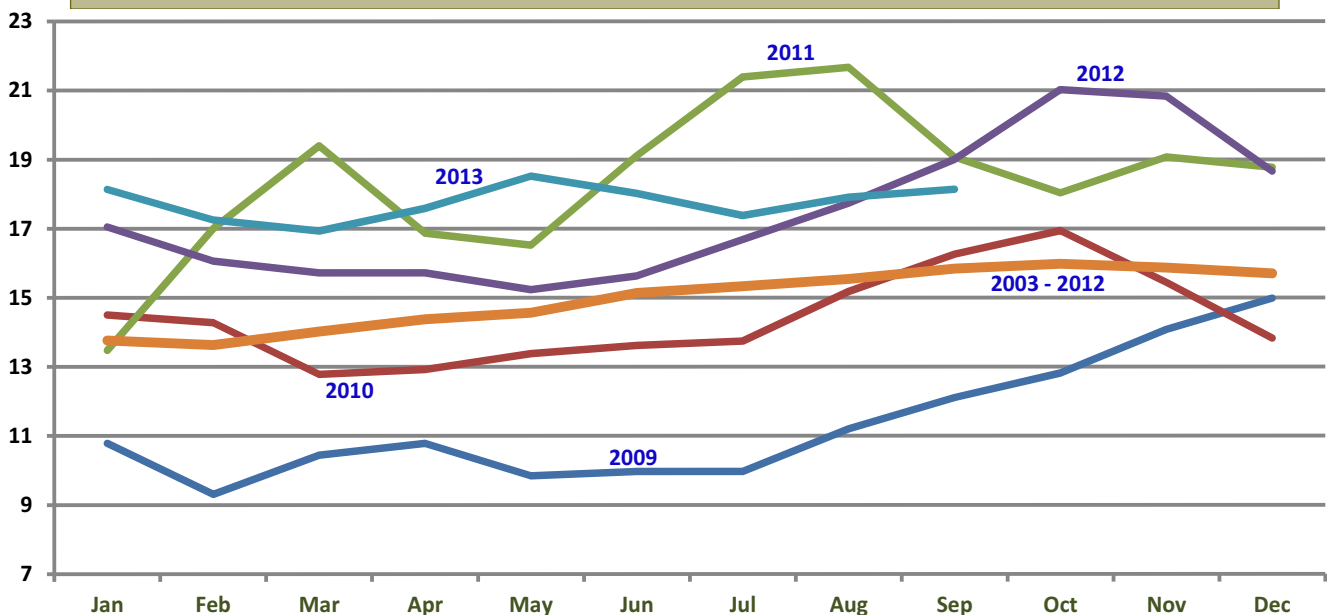
Federal Order Class III Milk Prices - January 2003 through September 2013

3.5 % Butterfat -- Dollars Per Cwt.

	<u>Jan</u>	<u>Feb</u>	<u>Mar</u>	<u>April</u>	<u>May</u>	<u>June</u>	<u>July</u>	<u>Aug</u>	<u>Sep</u>	<u>Oct</u>	<u>Nov</u>	<u>Dec</u>	<u>Simple Average</u>
2003	9.78	9.66	9.11	9.41	9.71	9.75	11.78	13.80	14.30	14.39	13.47	11.87	11.42
2004	11.61	11.89	14.49	19.66	20.58	17.68	14.85	14.04	14.72	14.16	14.89	16.14	15.39
2005	14.14	14.70	14.08	14.61	13.77	13.92	14.35	13.60	14.30	14.35	13.35	13.37	14.05
2006	13.39	12.20	11.11	10.93	10.83	11.29	10.92	11.06	12.29	12.32	12.84	13.47	11.89
2007	13.56	14.18	15.09	16.09	17.60	20.17	21.38	19.83	20.07	18.70	19.22	20.60	18.04
2008	19.32	17.03	18.00	16.76	18.18	20.25	18.24	17.32	16.28	17.06	15.51	15.28	17.44
2009	10.78	9.31	10.44	10.78	9.84	9.97	9.97	11.20	12.11	12.82	14.08	14.98	11.36
2010	14.50	14.28	12.78	12.92	13.38	13.62	13.74	15.18	16.26	16.94	15.44	13.83	14.41
2011	13.48	17.00	19.40	16.87	16.52	19.11	21.39	21.67	19.07	18.03	19.07	18.77	18.37
2012	17.05	16.06	15.72	15.72	15.23	15.63	16.68	17.73	19.00	21.02	20.83	18.66	17.44
2013	18.14	17.25	16.93	17.59	18.52	18.02	17.38	17.91	18.14				17.75
2003-2012 Avg	13.76	13.63	14.02	14.38	14.56	15.14	15.33	15.54	15.84	15.98	15.87	15.70	14.98

Federal Order Class III Milk Prices

3.5 % Butterfat -- Dollars Per Cwt.



Computation of Producer Price Differential - September 2013

	Utilization Percentage	Product Pounds	Component Pounds	Rate	Value
Class I					
Differential Value					\$ 5,168,519.97
Product	10.8%	297,832,295			
Skim Milk			293,523,288	\$14.2600	41,856,420.89
Butterfat			4,309,007	1.5420	6,644,488.82
Class II	2.0%	54,329,021			
Product					
Nonfat Solids			4,307,535	1.6622	7,159,984.68
Butterfat			7,008,234	1.5266	10,698,770.02
Class III	86.5%	2,375,412,206			
Product					
Protein			72,831,572	3.5419	257,962,144.88
Other Solids			136,523,343	0.3914	53,435,236.42
Butterfat			83,575,950	1.5196	127,002,013.63
Class IV	0.7%	19,881,235			
Product					
Nonfat Solids			1,125,254	1.6243	1,827,750.09
Butterfat			7,505,725	1.5196	11,405,699.70
SCC Adjustment (Class II, III, and IV)					2,438,926.76
Total Producer Milk *		2,747,454,757			\$525,599,955.86
Add:					
Overage					16,091.67
Inventory Reclassified					(35,880.06)
Other Source Milk \$.60(h)					0.00
Other Source Milk \$.60(i)		263,506			6,903.86
Subtract:					
Transportation Credit					61,687.04
Assembly Credit					235,096.95
Credit for Reconstituted FMP					0.00
Producer Milk Protein					297,625,655.14
Producer Milk Other Solids					61,646,593.98
Producer Milk Butterfat					155,605,392.73
Producer Milk SCC Adjustment					2,738,805.06
Total Milk and Value		2,747,718,263			\$ 7,673,840.43
Add:					
Location Adjustment -- Producer and Unregulated Supply Plant Milk					2,128,696.36
One-Half Unobligated Balance Producer Settlement Fund					1,353,111.27
Total Value				0.405997	\$ 11,155,648.06
Subtract:					
Producer Settlement Fund Reserve				0.045997	1,263,862.31
Producer Price Differential **				\$0.36	\$9,891,785.75

* An estimated 184 million pounds of milk was not pooled.

** Producer Price Differential is dollars per cwt. at the Base Zone of Cook County, Illinois.

Upper Midwest Pool Statistics - September 2013

Market Class I Differential Rate	Pool Plants	Received at Pool Plants	Diverted to Pool and Nonpool Plants	Total	Location Adjustment to Producers	Class I Differential to Handlers	
Cwt.	Number	Pounds	Pounds	Pounds	Value	Pounds	Value
\$1.80	3	75,866,020	18,751,322	94,617,342	\$ 0	76,349,794	\$ 1,374,296
\$1.75	33	102,886,023	1,042,810,067	1,145,696,090	572,848	76,288,558	1,335,050
\$1.70	27	232,047,515	1,178,734,228	1,410,781,743	1,410,782	126,947,660	2,158,110
\$1.65	4	22,291,708	74,067,874	96,359,582	144,539	18,246,283	301,064
Total	67	433,091,266	2,314,363,491	2,747,454,757	\$ 2,128,169	297,832,295	\$ 5,168,520

Utilization and Classification of Milk

	September 2013		August 2013	September 2012
	Product Pounds	Butterfat Pounds	Product Pounds	Product Pounds
Class I Utilization:				
Packaged Disposition				
Milk	38,334,610	1,258,514	42,246,677	38,459,816
Flavored Milk	2,322,437	73,134	2,430,949	2,357,999
Reduced Fat Milk	104,022,002	2,015,933	115,024,901	109,176,942
Lowfat Milk	53,914,448	512,164	54,826,339	56,044,078
Fat Free Milk	63,186,307	55,928	67,423,523	70,430,374
Flavored Reduced and Fat Free Milk	30,812,658	202,809	23,477,162	31,474,203
Buttermilk	2,665,139	39,928	3,138,020	2,498,312
Total Packaged Disposition	295,257,601	4,158,410	308,567,571	310,441,724
Total Ending Inventory	20,590,157	281,768	18,701,745	21,958,100
Bulk to Nonpool Plants	3,898,146	87,254	2,371,876	3,291,396
Shrinkage	746,946	82,630	957,014	1,441,583
Total Class I Utilization	320,492,850	4,610,062	330,598,206	337,132,803
Other Order Plants	(3,215,198)	(47,463)	(2,925,438)	(2,741,292)
Beginning Inventory	(18,701,745)	(249,212)	(19,614,808)	(21,770,443)
Reused Products	0	0	0	0
Other Source Milk	(302,170)	(569)	(239,333)	(329,916)
Overage	0	0	0	0
Interhandler Adjustment	(441,442)	(3,811)	(13,359)	(223,182)
Class I Producer Milk	297,832,295	4,309,007	307,805,268	312,067,970
Class II Utilization:				
Total Class II Utilization	58,931,692	7,079,317	60,455,407	180,110,820
Other Order Plants	0	0	--	0
Beginning Inventory	--	--	(1,003,583)	--
Reused Products	(4,599,510)	(67,922)	(6,497,695)	(5,609,598)
Other Source Milk	(3,161)	(3,161)	--	0
Overage	0	0	0	0
Class II Producer Milk	54,329,021	7,008,234	52,954,129	174,501,222
Class III Utilization:				
Total Class III Utilization	2,386,550,368	83,770,329	2,559,548,052	1,498,894,211
Other Order Plants	(6,460,767)	(119,020)	(3,252,551)	--
Beginning Inventory	(3,800,359)	(35,901)	(9,608,866)	(1,711,628)
Reused Products	0	0	0	0
Other Source Milk	(841,438)	(33,411)	(10,427,411)	(2,292,336)
Overage	(35,598)	(6,047)	(51,805)	(94,098)
Class III Producer Milk	2,375,412,206	83,575,950	2,536,207,419	1,494,796,149
Class IV Utilization:				
Total Class IV Utilization	63,640,127	9,595,414	57,446,886	168,605,984
Other Order Plants	(5,576,079)	(336,123)	(6,570,099)	(4,039,410)
Beginning Inventory	(9,263,609)	(591,034)	(5,767,735)	(11,902,241)
Reused Products	0	0	0	0
Other Source Milk	(28,914,400)	(1,160,877)	(30,485,520)	(61,386,455)
Overage	(4,804)	(1,655)	(11,339)	(244,364)
Class IV Producer Milk	19,881,235	7,505,725	14,612,193	70,458,237
Total Producer Milk -- All Classes	2,747,454,757	102,398,916	2,911,579,009	2,261,743,708

-- Restricted Information

Commodity Prices

Month/Year	Weighted Monthly Average Prices						Weighted Two-Week Average Prices					
	Cheddar Cheese			Nonfat			Cheddar Cheese			Nonfat		
	Blocks	Barrels	Average	Butter	Dry Milk	Dry Whey	Blocks	Barrels	Average	Butter	Dry Milk	Dry Whey
	<i>Dollars per Pound</i>						<i>Dollars per Pound</i>					
Sep 2012	1.8582	1.8423	1.8647	1.8269	1.3768	0.5846	1.8524	1.8262	1.8542	1.8237	1.3708	0.5804
Oct	2.0366	2.0308	2.0479	1.9168	1.4636	0.6205	1.9953	2.0156	2.0186	1.9197	1.4503	0.6130
Nov	2.0210	1.9769	2.0146	1.8410	1.5143	0.6480	2.0669	2.0474	2.0717	1.8860	1.5112	0.6450
Dec	1.8090	1.7439	1.7925	1.5981	1.5384	0.6610	1.8405	1.7769	1.8250	1.6126	1.5442	0.6588
Jan 2013	1.7449	1.7277	1.7485	1.5066	1.5601	0.6503	1.7506	1.7264	1.7535	1.5280	1.5603	0.6536
Feb	1.6754	1.6190	1.6623	1.5438	1.5559	0.6393	1.6694	1.5993	1.6480	1.5393	1.5644	0.6399
Mar	1.6339	1.6296	1.6467	1.6146	1.5208	0.6048	1.6362	1.6142	1.6402	1.5909	1.5219	0.6094
Apr	1.7313	1.7007	1.7310	1.6766	1.5312	0.5741	1.6764	1.6542	1.6803	1.6542	1.5021	0.5797
May	1.8556	1.7640	1.8274	1.6483	1.6374	0.5765	1.8864	1.7519	1.8388	1.6579	1.6367	0.5741
Jun	1.7569	1.7778	1.7810	1.5422	1.6878	0.5738	1.7658	1.7664	1.7806	1.5590	1.6826	0.5710
Jul	1.7020	1.6983	1.7142	1.4674	1.7272	0.5804	1.7141	1.6974	1.7201	1.4902	1.7131	0.5769
Aug	1.7498	1.7727	1.7731	1.4187	1.7706	0.5778	1.7463	1.7888	1.7778	1.4448	1.7679	0.5752
Sep	n/a	n/a	1.7961	1.4263	1.8085	0.5791	1.7479	1.7757	1.7739	1.3876	1.8008	0.5791

Month/Year	Chicago Mercantile Exchange							
	Butter	Cheddar Cheese		Nonfat Dry Milk (Low/Medium Heat)		Whey Powder		
	Grade AA	Blocks	Barrels	Central & East	West	Central	West	
	<i>Dollars per Pound</i>							
Aug 2012	1.7687	1.8262	1.7889	1.4312	1.3770	0.5221	0.5553	
Sep	1.8803	1.9245	1.8780	1.5963	1.5157	0.5751	0.5979	
Oct	1.9086	2.0757	2.0240	1.5555	1.4973	0.6003	0.6134	
Nov	1.7910	1.9073	1.8388	1.5458	1.5163	0.6299	0.6221	
Dec	1.5590	1.7448	1.6634	1.5666	1.5458	0.6318	0.6184	
Jan 2013	1.4933	1.6965	1.6388	1.5723	1.6592	0.6302	0.5993	
Feb	1.5713	1.6420	1.5880	1.5590	1.5291	0.6137	0.5894	
Mar	1.6421	1.6240	1.5920	1.5268	1.4995	0.5830	0.5768	
Apr	1.7197	1.8225	1.7124	1.6590	1.6231	0.5581	0.5705	
May	1.5997	1.8052	1.7251	1.7023	1.6769	0.5514	0.5884	
Jun	1.5105	1.7140	1.7184	1.7184	1.6950	0.5528	0.5888	
Jul	1.4751	1.7072	1.6919	1.7548	1.7565	0.5486	0.5907	
Aug	1.4013	1.7493	1.7425	1.7993	1.7832	0.5495	0.5825	

Market Statistics

Month/Year	Distributing Plants	Supply Plants	Coop .9(c) Handlers	Producers	Total Producer Milk	Est. Average Daily Delivery Per Producer	Class I Utilization	Butterfat Test	Protein Test	Other Solids Test	Weighted Average SCC
					Mil. lbs.	Pounds	Percent	Percent	Percent	Percent	
										(000)	
Jul 2012	20	53	12	11,551	2,235	6,239	13.2	3.58	2.94	5.74	246
Aug	20	51	12	11,196	2,262	6,513	14.5	3.63	3.01	5.74	248
Sep	20	51	12	10,911	2,072	6,327	15.1	3.74	3.09	5.73	227
Oct	21	51	12	11,083	2,027	5,897	16.7	3.89	3.17	5.73	209
Nov	21	51	12	11,721	2,265	6,441	14.8	3.91	3.18	5.72	203
Dec	21	50	12	12,439	2,782	7,211	11.6	3.89	3.15	5.74	201
Jan 2013	21	51	12	12,935	3,030	7,550	11.0	3.89	3.14	5.74	210
Feb	19	51	12	12,803	2,699	7,528	11.0	3.88	3.14	5.75	214
Mar	18	49	12	12,679	3,010	7,655	10.4	3.87	3.14	5.74	212
Apr	18	49	12	12,662	2,895	7,619	10.8	3.84	3.12	5.74	213
May	18	50	12	11,978	2,847	7,666	11.0	3.77	3.09	5.76	216
Jun	17	48	12	12,455	2,847	7,619	9.5	3.71	3.04	5.76	231
Jul	17	48	12	12,466	2,892	7,487	10.1	3.66	2.98	5.75	254
Aug	17	50	12		2,912		10.6	3.70	3.01	5.76	241
Sep	17	50	12		2,747		10.8	3.73	3.06	5.73	239

Class Prices

Month/Year	Class I Price Mover			Class I Price at Cook County, IL			Class II Price			
	Butterfat	Skim Milk	3.50%	Butterfat	Skim Milk	3.50%	Butterfat	Nonfat Solids	Skim Milk	3.50%
	<i>lb.</i>	<i>cwt.</i>	<i>cwt.</i>	<i>lb.</i>	<i>cwt.</i>	<i>cwt.</i>	<i>lb.</i>	<i>lb.</i>	<i>cwt.</i>	<i>cwt.</i>
Sep 2012	1.8361	11.57	17.59	1.8541	13.37	19.39	2.0117	1.1511	10.36	17.04
Oct	2.0008	12.31	18.88	2.0188	14.11	20.68	2.1206	1.2689	11.42	18.44
Nov	2.1171	13.77	20.70	2.1351	15.57	22.50	2.0288	1.3478	12.13	18.81
Dec	2.0763	14.63	21.39	2.0943	16.43	23.19	1.7346	1.4078	12.67	18.30
Jan 2013	1.7452	13.33	18.97	1.7632	15.13	20.77	1.6238	1.4400	12.96	18.19
Feb	1.6427	12.91	18.21	1.6607	14.71	20.01	1.6689	1.4567	13.11	18.49
Mar	1.6564	12.44	17.80	1.6744	14.24	19.60	1.7546	1.4600	13.14	18.82
Apr	1.7189	12.07	17.66	1.7369	13.87	19.46	1.8297	1.4189	12.77	18.73
May	1.7955	11.89	17.76	1.8135	13.69	19.56	1.7954	1.3989	12.59	18.43
Jun	1.8000	13.09	18.93	1.8180	14.89	20.73	1.6669	1.5322	13.79	19.14
Jul	1.6803	13.50	18.91	1.6983	15.30	20.71	1.5763	1.5778	14.20	19.22
Aug	1.5969	13.77	18.88	1.6149	15.57	20.68	1.5174	1.6078	14.47	19.27
Sep	1.5420	14.26	19.16	1.5600	16.06	20.96	1.5266	1.6622	14.96	19.78
Oct	1.4727	14.55	19.20	1.4907	16.35	21.00		1.6944	15.25	

Month/Year	Class III Price					Class IV Price			
	Butterfat	Protein	Other Solids	Skim Milk	3.50%	Butterfat	Nonfat Solids	Skim Milk	3.50%
	<i>lb.</i>	<i>lb.</i>	<i>lb.</i>	<i>cwt.</i>	<i>cwt.</i>	<i>lb.</i>	<i>lb.</i>	<i>cwt.</i>	<i>cwt.</i>
Sep 2012	2.0047	3.2521	0.3971	12.42	19.00	2.0047	1.1969	10.77	17.41
Oct	2.1136	3.7278	0.4340	14.12	21.02	2.1136	1.2828	11.55	18.54
Nov	2.0218	3.7172	0.4624	14.25	20.83	2.0218	1.3330	12.00	18.66
Dec	1.7276	3.3113	0.4758	13.07	18.66	1.7276	1.3569	12.21	17.83
Jan 2013	1.6168	3.2862	0.4647	12.93	18.14	1.6168	1.3784	12.41	17.63
Feb	1.6619	2.9609	0.4534	11.85	17.25	1.6619	1.3742	12.37	17.75
Mar	1.7476	2.8204	0.4179	11.21	16.93	1.7476	1.3395	12.06	17.75
Apr	1.8227	3.0130	0.3863	11.62	17.59	1.8227	1.3498	12.15	18.10
May	1.7884	3.3597	0.3887	12.71	18.52	1.7884	1.4549	13.09	18.89
Jun	1.6599	3.3455	0.3859	12.65	18.02	1.6599	1.5048	13.54	18.88
Jul	1.5693	3.2257	0.3927	12.32	17.38	1.5693	1.5438	13.89	18.90
Aug	1.5104	3.4775	0.3901	13.08	17.91	1.5104	1.5868	14.28	19.07
Sep	1.5196	3.5419	0.3914	13.29	18.14	1.5196	1.6243	14.62	19.43

Producer Prices

Month/Year	Producer Price Differential	Statistical Uniform Price (at 3.50%)	Butterfat Price	Protein Price	Other Solids Price	SCC Adjustment Rate	Producer Mailbox Price (at test)
	<i>\$ per cwt.</i>	<i>\$ per cwt.</i>	<i>\$ per lb.</i>	<i>\$ per lb.</i>	<i>\$ per lb.</i>	<i>\$ per cwt.</i>	<i>\$ per cwt.</i>
Jul 2012	(0.02)	16.66	1.6556	3.0430	0.3123	0.00084	17.54
Aug	(0.04)	17.69	1.8339	3.1211	0.3462	0.00088	18.89
Sep	(0.14)	18.86	2.0047	3.2521	0.3971	0.00093	20.61
Oct	(0.49)	20.53	2.1136	3.7278	0.4340	0.00102	22.85
Nov	(0.15)	20.68	2.0218	3.7172	0.4624	0.00101	22.75
Dec	0.32	18.98	1.7276	3.3113	0.4758	0.00090	21.17
Jan 2013	0.20	18.34	1.6168	3.2862	0.4647	0.00087	20.42
Feb	0.32	17.57	1.6619	2.9609	0.4534	0.00083	19.56
Mar	0.33	17.26	1.7476	2.8204	0.4179	0.00082	19.29
Apr	0.25	17.84	1.8227	3.0130	0.3863	0.00087	19.75*
May	0.11	18.63	1.7884	3.3597	0.3887	0.00091	20.21
Jun	0.30	18.32	1.6599	3.3455	0.3859	0.00089	19.65
Jul	0.40	17.78	1.5693	3.2257	0.3927	0.00086	18.91
Aug	0.34	18.25	1.5104	3.4775	0.3901	0.00089	
Sep	0.36	18.50	1.5196	3.5419	0.3914	0.00090	*revised 5/2/14

FEDERAL MILK MARKET ADMINISTRATOR
 U.S. DEPARTMENT OF AGRICULTURE
 1600 W. 82nd St., Suite 200
 Minneapolis, MN 55431-1420

FIRST-CLASS MAIL
 U.S. POSTAGE PAID
 HOPKINS, MN
 PERMIT NO. 586

Address Service Requested

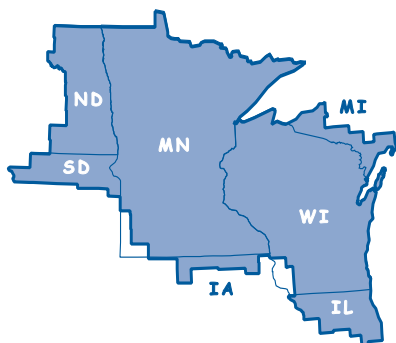
Summary of Federal Order Data - September 2013

Federal Order Number / Name	Producer Deliveries <i>— Thousand Pounds —</i>	Class I Producer Receipts <i>— Thousand Pounds —</i>	Class I Utilization <i>Percent</i>	Class I Price <i>— Dollars per Cwt. —</i>	Producer Price Differential	Uniform or Statistical Uniform Price at 3.5% Butterfat		
						FOB Market	FOB Cook Cty. Illinois <i>Dollars per Cwt.</i>	Change From Previous Year
1 Northeast	1,997,714	776,354	38.9	\$22.41	\$2.44	\$20.58	\$19.13	\$1.13
5 Appalachian	444,817	314,965	70.8	22.56	n/a	21.72	20.12	1.40
6 Florida	222,897	192,821	86.5	24.56	n/a	23.86	20.26	1.46
7 Southeast	476,259	332,019	69.7	22.96	n/a	22.10	20.10	1.23
30 Upper Midwest	2,747,455	297,832	10.8	20.96	0.36	18.50	18.50	(0.36)
32 Central	1,223,100	398,326	32.6	21.16	1.03	19.17	18.97	0.80
33 Mideast	1,299,521	530,305	40.8	21.16	1.42	19.56	19.36	1.03
124 Pacific Northwest	602,277	174,199	28.9	21.06	0.99	19.13	19.03	0.96
126 Southwest	989,110	356,256	36.0	22.16	1.83	19.97	18.77	0.59
131 Arizona	331,788	110,934	33.4	21.51	n/a	19.79	19.24	0.85
All Market Average or Total *	10,334,938	3,484,011	33.7					

n/a = Not applicable. * May not add due to rounding.

The U.S. Department of Agriculture (USDA) prohibits discrimination in all its programs and activities on the basis of race, color, national origin, age, disability, and where applicable, sex, marital status, familial status, parental status, religion, sexual orientation, genetic information, political beliefs, reprisal, or because all or part of an individual's income is derived from any public assistance program. (Not all prohibited bases apply to all programs.) Persons with disabilities who require alternative means for communication of program information (Braille, large print, audiotape, etc.) should contact USDA's TARGET Center at (202) 720-2600 (voice and TDD).

To file a complaint of discrimination, write to USDA, Director, Office of Civil Rights, 1400 Independence Avenue, S.W., Washington, D.C. 20250-9410, or call (800) 795-3272 (voice) or (202) 720-6382 (TDD). USDA is an equal opportunity provider and employer.



Upper Midwest Marketing Area F.O. 30

Phone: (952) 831-5292

Fax: (952) 831-8249

Website: www.fmma30.com

