

UPPER MIDWEST MARKETING AREA

**ANALYSIS OF COMPONENT LEVELS AND SOMATIC CELL COUNT IN INDIVIDUAL
HERD MILK AT THE FARM LEVEL
2014**



Staff Paper 15-01

Prepared by:
Corey Freije

August 2015

Federal Milk Market Administrator's Office
1600 West 82nd Street, Suite 200
Minneapolis, Minnesota 55431-1420

ANALYSIS OF COMPONENT LEVELS AND SOMATIC CELL COUNT IN INDIVIDUAL HERD MILK AT THE FARM LEVEL

2014

Corey Freije

The U.S. Department of Agriculture (USDA) prohibits discrimination in all its programs and activities on the basis of race, color, national origin, age, disability, and where applicable, sex, marital status, familial status, parental status, religion, sexual orientation, genetic information, political beliefs, reprisal, or because all or part of an individual's income is derived from any public assistance program. (Not all prohibited bases apply to all programs.) Persons with disabilities who require alternative means for communication of program information (Braille, large print, audiotape, etc.) should contact USDA's TARGET Center at (202) 720-2600 (voice and TDD).

To file a complaint of discrimination, write to USDA, Director, Office of Civil Rights, 1400 Independence Avenue, S.W., Washington, D.C. 20250-9410, or call (800) 795-3272 (voice) or (202) 720-6382 (TDD). USDA is an equal opportunity provider and employer.

TABLE OF CONTENTS

| | <u>Page</u> |
|---|-------------|
| I. INTRODUCTION..... | 1 |
| II. DATA AND METHODOLOGY | 1 |
| III. SEASONAL VARIATION IN MILK COMPONENT LEVELS AND SOMATIC CELL COUNT | 2 |
| IV. VARIATIONS IN MILK COMPONENT LEVELS AND SOMATIC CELL COUNTS WITHIN THE MARKETING AREA..... | 7 |
| V. COMPONENT VALUES UNDER THE UPPER MIDWEST ORDER..... | 9 |
| VI. TRENDS IN SOMATIC CELL COUNTS UNDER THE UPPER MIDWEST ORDER | 13 |
| VII. SUMMARY..... | 15 |

ANALYSIS OF COMPONENT LEVELS AND SOMATIC CELL COUNT IN INDIVIDUAL HERD MILK AT THE FARM LEVEL

2014

Corey Freije¹

I. INTRODUCTION

This study analyzes the component levels and values comprising milk production for Federal Order 30 for 2014. The payroll data for producers who were associated with the Upper Midwest Marketing Order were examined. On average, 13,398 dairy producers were associated with the market every month.

The payroll data presented for this study are for those dairy farmers residing in any county in the states comprising Federal Order 30. The exception to this is Michigan whose included area is held to the Upper Peninsula. The data are aggregated to the farm level which is consistent with other staff papers done by this office.

II. DATA AND METHODOLOGY

The data used in this analysis are from monthly payroll records submitted to the Upper Midwest Order. Since handlers generally submit their entire payrolls, the data include not only producer milk pooled on the Upper Midwest, but also may include, in some cases, producer milk pooled on other orders and milk historically associated with the order but not pooled in some months because of price relationships between classes and other Federal marketing orders. The result is a difference between the number of producers and milk production reported in this study and the number of producers and milk production reported as pooled on the Upper Midwest Order. Also, there are a number of instances in which there are multiple cases representing producer milk from one farm. These are situations where more than one producer received a share of the milk check, or there is more than one bulk tank on the farm. For individual producers, total monthly milk marketed, component pounds and somatic cell count (scc) from payrolls submitted to the Market

¹ The author, Dr. Corey Freije, is an Agricultural Economist with the Market Administrator's Office, Minneapolis, Minnesota. Assisting Dr. Freije were Rachel M. Benecke and Henry Schaefer of the Upper Midwest Market Administrator's office.

Administrator's office are aggregated to the farm level for this analysis. All producer milk was included in the analysis that follows unless otherwise noted in the text, figures or tables.

Other solids, for purposes of Federal milk order pricing, are defined as solids-not-fat (snf) minus protein. Therefore, other solids consist primarily of lactose and ash. Ash traditionally has been considered a constant in snf, while lactose does vary somewhat in the snf.

Many factors such as weather, feed quality and feeding practices, breed of cattle, etc., may impact component levels and relationships among components in milk. No attempt was made to estimate the specific effects of such factors on milk composition. However, average component levels were examined for seasonal or within-year variation. In addition, component levels were examined for the seven primary states that are at least partially within the milk procurement area of the Upper Midwest Order. Since the procurement area stretches from south of Chicago to northwestern North Dakota, state level component and scc statistics provide a means of reflecting variation in milk composition across a large geographic area. For 2014, average component levels by size of producer marketings were also examined.

This paper also looks at somatic cell count data for the period 2002 to 2014. The analysis seeks to identify and quantify a possible trend in decreasing somatic cell counts. The trend component must also be separated from the cyclical component endemic to somatic cell counts.

The cumulative value of butterfat, protein and other solids, adjusted for scc, on an annual per cwt. basis was examined to observe how milk values varied under differing constraints. Monthly Federal order component prices that apply to the Upper Midwest Order were used to calculate milk values for this study.

III. SEASONAL VARIATION IN MILK COMPONENT LEVELS AND SOMATIC CELL COUNT

While widespread use of artificial insemination, freestall barns and total mix rations have reduced production swings, seasonality is still present. Seasonal production 'spring flush' and the winter drop in production also lead to seasonal movements in component tests. As Table 1 indicates, butterfat, protein and snf tests have their lowest levels in June and July

and peak in November. Somatic cell counts peak in the warm summer months and reach a low point in November. Other solids tests show little variation but usually peak in the spring or summer months.

Seasonal changes in component levels for 2014 appeared to be relatively normal. Beginning in January, butterfat and protein tests tapered off during the summer to low points in June and July, then rose to peak levels at some time in the winter. Other solids tests increased slightly in the spring and then declined slightly and leveled off for the remainder of the year. The seasonality of changes and magnitude of variation in component levels during the year were generally similar to the observed results from previous studies. Seasonal variation in the monthly average scc appeared to be typical, with higher levels in the summer and lower levels in the fall and winter. Monthly weighted average component levels and scc for 2014 are summarized in Table 1 and miscellaneous annual statistics, in addition to weighted averages, are summarized in Table 2.

Table 1

**Weighted Average Levels of Selected Components
and Somatic Cell Count in Milk by Month**

2014

| <u>Month</u> | <u>Butterfat</u> Test - % - | <u>Protein</u> Test - % - | <u>Other Solids</u> Test - % - | <u>Solids-Not-Fat</u> Test - % - | <u>Somatic Cell</u> Count - 1,000 - |
|----------------|-----------------------------------|---------------------------------|--------------------------------------|--|---|
| January | 3.89 | 3.18 | 5.71 | 8.89 | 224 |
| February | 3.87 | 3.17 | 5.71 | 8.88 | 228 |
| March | 3.84 | 3.15 | 5.70 | 8.85 | 224 |
| April | 3.79 | 3.10 | 5.71 | 8.81 | 212 |
| May | 3.74 | 3.07 | 5.72 | 8.80 | 211 |
| June | 3.67 | 3.02 | 5.76 | 8.77 | 234 |
| July | 3.68 | 3.01 | 5.74 | 8.75 | 252 |
| August | 3.71 | 3.03 | 5.75 | 8.78 | 249 |
| September | 3.77 | 3.10 | 5.74 | 8.84 | 236 |
| October | 3.86 | 3.16 | 5.75 | 8.90 | 199 |
| November | 3.92 | 3.20 | 5.73 | 8.93 | 191 |
| December | 3.88 | 3.18 | 5.74 | 8.92 | 198 |
| Minimum | 3.67 | 3.01 | 5.70 | 8.75 | 191 |
| Maximum | 3.92 | 3.20 | 5.76 | 8.93 | 252 |
| Annual Average | 3.80 | 3.11 | 5.73 | 8.84 | 222 |

During the year, butterfat levels dropped from 3.89% in January to 3.67% in June, then rose to 3.92% by November. Protein and snf showed similar seasonal patterns during the year by bottoming out in the summer and peaking by year-end. The standard deviation for butterfat, protein and snf was 0.31, 0.17 and 0.18 percentage points, respectively. Other solids demonstrated the narrowest range of variation with no apparent seasonal pattern. Other solids levels ranged from a high of 5.76% in the summer months and a low of 5.70% in March. The seasonal high scc of 252,000 was reached in July before a low of 191,000 in November, a change of 61,000 during the year.

For the year, the simple average butterfat levels were equal to or higher than the weighted average. The higher simple averages relative to the weighted averages for butterfat indicates that smaller producers (in terms of monthly milk deliveries) tend to have higher levels of butterfat than their larger counterparts. Conversely, the simple averages for other solids and snf were lower than the weighted averages for the respective components indicating that larger producers tended to have higher levels of these components than smaller producers. For the year 2014, the simple average scc (266,000) was higher than the weighted average (222,000) indicating that larger producers tended to have, on average, lower scc than their smaller counterparts. Moreover, the median scc level (202,000) was also lower than the simple average scc, indicating that the distribution of scc levels for the market was skewed toward higher scc levels.

Table 2

**Component Levels and Somatic Cell Count of Milk:
Weighted Average, Simple Average, Weighted Standard Deviation,
Weighted Median, Minimum and Maximum**

2014

| <u>Component</u> | <u>Weighted Average</u> - % - | <u>Simple Average</u> - % - | <u>Weighted Standard Deviation</u> - % - | <u>Weighted Median</u> - % - | <u>Minimum</u> - % - | <u>Maximum</u> - % - |
|------------------|--------------------------------------|------------------------------------|---|-------------------------------------|-------------------------|-------------------------|
| Butterfat | 3.80 | 3.88 | 0.31 | 3.76 | 0.29 | 6.86 |
| Protein | 3.11 | 3.11 | 0.17 | 3.09 | 1.82 | 5.04 |
| Other Solids | 5.73 | 5.67 | 0.08 | 5.74 | 0.00 | 9.97 |
| SNF | 8.84 | 8.78 | 0.18 | 8.83 | 3.00 | 13.05 |
| SCC (1,000's) | 222 | 266 | 105 | 202 | 1 | 2,800 |

As Table 2 shows, the weighted averages for butterfat and somatic cell counts lie below the simple average. Historically, this relationship was also true for protein tests. In the past, this relationship has indicated that production, other solids, and solids-not-fat tests were directly related while butterfat, protein, and somatic cell counts were inversely related to production levels. 2012 to 2014 have seen higher protein levels and overall higher component levels in the largest production group as seen in Tables 5a and 5b. The more numerous smaller dairies have tests more likely equal to the simple average and the fewer larger dairies more likely equal the weighted average. A more detailed breakdown of that skewness is presented in Tables 3a and 3b. The data for Tables 3a and 3b are from producers for which we have data for all twelve months.

The overall distributions for butterfat, protein and solids-not-fat tests are all approximately normal with other solids and somatic cell counts being skewed. Somatic cell counts are skewed right with a large number of observations at lower levels and fewer large values, meaning that 80% of the farms have a higher somatic cell count than the weighted average somatic cell count. The lower somatic cell count of the larger producers drags down the weighted average.

The range of component levels observed in the data was fairly wide. Individual monthly average butterfat levels in the data were as low as 0.29% and as high as 6.86%; protein levels ranged from 1.82% to 5.04%; other solids levels ranged from 0.00% to 9.97%; solids-not-fat levels ranged from 3.00% to 13.05%; and scc ranged from 1,000 to 2,800,000.

However, during the year, the component test levels and scc levels in most producer milk were within one standard deviation of the weighted average.² The ranges of component levels within one standard deviation of the weighted average were: 3.49% to 4.11% for butterfat; 2.94% to 3.28% for protein; 5.65% to 5.81% for other solids; 8.66% to 9.02% for solids-not-fat; and 117,000 to 327,000 for scc. Approximately three-quarters of the observed component levels and scc in the 2014 data were within these ranges.

The differences in the weighted and simple averages and the medians of the component tests warrant a closer look at the relationship between farm size, based on monthly average milk marketed, and milk component levels. Producers with marketings for each month of

² By definition, for a *normal distribution*, approximately 68 percent of observations are within one standard deviation of the weighted average.

2014 were divided into 10 percentiles, 10 groups with the same number of producers, based on average monthly production. The monthly average production and component tests are shown in Table 3a. The range of average monthly production and total production by group are also shown in Table 3b.

Table 3a

**Weighted Average Component Tests by Monthly Average Producer Milk Production
Producers with Production in Each Month of 2014**

| <u>Percentile</u> | <u>Number of Producers</u> | <u>Butterfat Test</u> - % - | <u>Protein Test</u> - % - | <u>Other Solids Test</u> - % - | <u>Solids- Not-Fat Test</u> - % - | <u>Somatic Cell Count</u> - 1,000 - |
|---------------------|------------------------------------|------------------------------------|----------------------------------|---|--|--|
| 1 | 1,267 | 3.97 | 3.13 | 5.58 | 8.70 | 319 |
| 2 | 1,267 | 3.94 | 3.11 | 5.62 | 8.73 | 309 |
| 3 | 1,267 | 3.92 | 3.11 | 5.64 | 8.75 | 295 |
| 4 | 1,267 | 3.89 | 3.10 | 5.66 | 8.77 | 282 |
| 5 | 1,267 | 3.88 | 3.09 | 5.68 | 8.77 | 270 |
| 6 | 1,267 | 3.87 | 3.10 | 5.69 | 8.79 | 257 |
| 7 | 1,267 | 3.84 | 3.09 | 5.70 | 8.79 | 244 |
| 8 | 1,267 | 3.84 | 3.11 | 5.71 | 8.82 | 229 |
| 9 | 1,267 | 3.80 | 3.10 | 5.73 | 8.83 | 217 |
| 10 | 1,267 | 3.77 | 3.12 | 5.75 | 8.87 | 205 |
| Total or Average | 12,670 | 3.80 | 3.11 | 5.73 | 8.84 | 221 |

Table 3b

**Monthly Average Producer Milk by Producer Size
Producers with Production in Each Month of 2014**

| <u>Percentile</u> | <u>Monthly Average Pounds</u> | <u>Minimum Monthly Average Pounds</u> | <u>Maximum Monthly Average Pounds</u> | <u>Total Pounds</u> | <u>Percent of Total Pounds</u> | <u>Cumulative Percent of Total</u> |
|---------------------|---------------------------------------|---|---|-------------------------|--|--|
| 1 | 21,671 | 1,702 | 32,617 | 329,487,572 | 0.80% | 0.80% |
| 2 | 40,873 | 32,626 | 48,747 | 621,439,167 | 1.51% | 2.31% |
| 3 | 56,407 | 48,751 | 64,223 | 857,615,357 | 2.09% | 4.40% |
| 4 | 73,010 | 64,250 | 81,806 | 1,110,037,530 | 2.70% | 7.10% |
| 5 | 90,964 | 81,807 | 100,699 | 1,383,021,359 | 3.36% | 10.46% |
| 6 | 112,916 | 100,710 | 126,122 | 1,716,774,445 | 4.17% | 14.63% |
| 7 | 145,091 | 126,125 | 167,248 | 2,205,960,856 | 5.36% | 20.00% |
| 8 | 204,566 | 167,266 | 255,374 | 3,110,226,597 | 7.56% | 27.56% |
| 9 | 355,112 | 255,565 | 518,143 | 5,399,124,957 | 13.13% | 40.69% |
| 10 | 1,604,425 | 518,676 | 21,671,270 | 24,393,671,578 | 59.31% | 100.00% |
| Total or Average | 270,504 | | | 41,127,359,416 | | |

A more detailed look at the relationship between producer size and component levels shows that larger producers tend to have lower butterfat tests and scc than do smaller producers. Producers averaging 21,671 pounds per month had an average butterfat test of 3.97% while producers averaging 1,604,425 pounds averaged a 3.77% butterfat test. The butterfat test declined steadily from a weighted average of 3.97% for the smallest group to a weighted average of 3.84% and 3.80% for groups 8 and 9, while the group 10 producers, those averaging 1,604,425 pounds per month, had a weighted average butterfat test of 3.77%. The scc declined steadily from an average of 319,000 for producers averaging 21,671 pounds per month to an average of 205,000 for producers averaging 1,604,425 pounds per month, a difference in the scc of 114,000.

Protein tests also declined from the smaller producers to the larger producers but to a smaller extent than for butterfat, falling from 3.13% for producer's averaging 21,671 pounds per month to 3.09% percent for producers averaging 145,091 pounds of milk marketed per month and rising to 3.12% for producers averaging 1,604,425 pounds.

Other solids and solids-not-fat tests steadily increased as average monthly production increased. Other solids tests increased from 5.58% to 5.75%, while solids-not-fat tests increased steadily from 8.70% to 8.87% as monthly average production increased from 21,671 pounds to 1,604,425 pounds.

The data from this group of producers also offers some interesting insight into the structure of the market. For instance, the smallest ten percent of producers supply less than one percent of the milk while the largest ten percent of producers supply more than 59 percent of the milk in the market. More than 80 percent of the producers have a monthly production below the monthly average market production of 270,504 pounds.

IV. VARIATIONS IN MILK COMPONENT LEVELS AND SOMATIC CELL COUNTS WITHIN THE MARKETING AREA

Milk component levels and scc were examined for the seven states that have counties residing within the Upper Midwest Marketing Area (see Table 4). Differences in average component levels and scc between the states were observed. One-way analysis of variance was used to determine that the weighted averages of the states were not equal. In addition, several post hoc paired tests were conducted to determine if any of the individual states' weighted averages were equal. These tests indicated that even though the

observed differences between some of the states were relatively small, the differences between the weighted averages were significant.

Of the states that are wholly or partially located in the Upper Midwest Marketing Area, South Dakota had the highest weighted average butterfat test and the highest weighted average protein test. North Dakota had the highest weighted average other solids test and South Dakota had the highest weighted average solids-not-fat test. Of the states that are included in the Upper Midwest Marketing Area, Michigan UP had the lowest weighted average scc and North Dakota had the highest.

Table 4

**Weighted Average Components Levels and Somatic Cell Count in Milk by State
2014**

| <u>State</u> | <u>Butterfat Test</u> - % - | <u>Protein Test</u> - % - | <u>Other Solids Test</u> - % - | <u>Solids- Not-Fat Test</u> - % - | <u>Somatic Cell Count</u> - 1,000 - |
|---------------|------------------------------------|----------------------------------|---|--|--|
| Illinois | 3.83 | 3.13 | 5.71 | 8.84 | 233 |
| Iowa | 3.82 | 3.15 | 5.75 | 8.90 | 229 |
| Michigan U.P. | 3.74 | 3.12 | 5.75 | 8.87 | 210 |
| Minnesota | 3.86 | 3.14 | 5.75 | 8.90 | 231 |
| North Dakota | 3.75 | 3.15 | 5.76 | 8.91 | 249 |
| South Dakota | 3.92 | 3.22 | 5.75 | 8.97 | 242 |
| Wisconsin | 3.77 | 3.09 | 5.72 | 8.81 | 216 |
| Market | 3.80 | 3.11 | 5.73 | 8.84 | 222 |
| Minimum | 3.74 | 3.09 | 5.71 | 8.81 | 210 |
| Maximum | 3.92 | 3.22 | 5.76 | 8.97 | 249 |

Tables 5a and 5b use a scale of production employed by the Upper Midwest Milk Order to illustrate differences present over production ranges from less than 50,000 pounds to over 5,000,000 pounds. Table 5a shows that butterfat and protein tests tend to decline as scale increases and somatic cell counts tend to decline, though none of the trends are monotonic. The largest scale of production, 5,000,000 pounds, has a substantial increase in butterfat and protein tests and a drop in somatic cell counts over the next smaller size range. Table 5b indicates the average monthly production for the largest range is twice the second largest size range's average monthly delivery. Table 5b also shows the largest size category produces 12.88% of the total production.

Table 5a**Weighted Average Component Tests by Monthly Average Producer Milk Production
All Producers 2014**

| <u>Size Categories (Pounds)</u> | <u>Monthly Average Pounds</u> | <u>Butterfat Test</u> | <u>Protein Test</u> | <u>Other Solids Test</u> | <u>Solids- Not-Fat Test</u> | <u>Somatic Cell Count</u> |
|-------------------------------------|---------------------------------------|---------------------------|-------------------------|----------------------------------|-------------------------------------|-----------------------------------|
| | | - % - | - % - | - % - | - % - | - 1,000 - |
| Up to 49,999 | 30,403 | 3.98 | 3.14 | 5.58 | 8.72 | 321 |
| 50,000 to 99,999 | 73,575 | 3.90 | 3.10 | 5.66 | 8.77 | 283 |
| 100,000 to 249,999 | 152,368 | 3.85 | 3.10 | 5.70 | 8.80 | 245 |
| 250,000 to 399,999 | 311,825 | 3.81 | 3.11 | 5.73 | 8.83 | 221 |
| 400,000 to 599,999 | 487,085 | 3.78 | 3.09 | 5.73 | 8.82 | 209 |
| 600,000 to 999,999 | 784,463 | 3.76 | 3.08 | 5.75 | 8.83 | 204 |
| 1,000,000 to 1,499,999 | 1,211,557 | 3.74 | 3.09 | 5.75 | 8.84 | 198 |
| 1,500,000 to 2,499,999 | 1,900,148 | 3.74 | 3.11 | 5.76 | 8.87 | 198 |
| 2,500,000 to 4,999,999 | 3,326,684 | 3.76 | 3.13 | 5.76 | 8.89 | 212 |
| 5,000,000 or more | 7,968,396 | 3.80 | 3.16 | 5.75 | 8.91 | 205 |
| Average | 261,222 | 3.88 | 3.11 | 5.67 | 8.78 | 266 |

Table 5b**Monthly Average Producer Milk by Producer Size
All Producers 2014**

| <u>Size Categories (Pounds)</u> | <u>Number of Observations</u> | <u>Minimum Monthly Average Pounds</u> | <u>Maximum Monthly Average Pounds</u> | <u>Percent of Total Pounds</u> | <u>Cumulative Percent of Total</u> |
|-------------------------------------|-----------------------------------|---|---|--|--|
| Up to 49,999 | 36,860 | 229 | 49,999 | 2.67% | 2.67% |
| 50,000 to 99,999 | 45,355 | 50,000 | 99,996 | 7.95% | 10.61% |
| 100,000 to 249,999 | 47,144 | 100,001 | 249,993 | 17.10% | 27.72% |
| 250,000 to 399,999 | 11,570 | 250,013 | 399,982 | 8.59% | 36.31% |
| 400,000 to 599,999 | 6,449 | 400,050 | 599,963 | 7.48% | 43.79% |
| 600,000 to 999,999 | 5,616 | 600,008 | 999,880 | 10.49% | 54.27% |
| 1,000,000 to 1,499,999 | 2,950 | 1,000,022 | 1,499,974 | 8.51% | 62.78% |
| 1,500,000 to 2,499,999 | 2,537 | 1,500,306 | 2,499,702 | 11.48% | 74.26% |
| 2,500,000 to 4,999,999 | 1,623 | 2,500,847 | 4,997,540 | 12.86% | 87.12% |
| 5,000,000 or more | 679 | 5,005,140 | 22,667,440 | 12.88% | 100.00% |
| Total | 160,783 | | | | |

V. COMPONENT VALUES UNDER THE UPPER MIDWEST ORDER

Multiple component pricing on the Upper Midwest Order allows for component levels to be viewed in terms of the value of producer milk given its composition. Milk values, for the purpose of this study, were calculated on an annual basis using monthly Federal order

component prices applied to producer milk associated with the Upper Midwest Order during 2014. These values reflect the aggregated value of butterfat, protein and other solids only. These values do not include monthly producer price differentials for the Upper Midwest Order or premiums and/or deductions that handlers pooling milk under the order may apply to producer pay prices.

In Table 8 for 2014, the cumulative value of butterfat, protein, other solids and an adjustment for scc averaged \$23.65 per cwt. for the market. The value of each component comprised by the \$23.65 per cwt. price was \$9.03 for butterfat, \$11.79 for protein, and \$2.69 for other solids. The scc adjustment for the year amounted to about \$0.14 per cwt.

Categorized by size range of delivery in Table 7, average values of producer milk ranged from a low of \$23.47 per cwt. for monthly producer milk deliveries greater than 1,000,000 and less than 1,499,000 pounds to a high of \$23.97 per cwt. for monthly producer milk deliveries of less than 49,999. In general, the average value of producer milk, per hundredweight, declines as monthly deliveries increase. Specifically, the average value per cwt dropped from \$23.97 for the smallest producers to \$23.47 for those producing between 1,000,000 to 1,499,999 pounds a month then rose for the larger producers. Historically, this relationship between value per hundredweight and production has been inversely related with the producers in the 5 million pound or more range having increased value over the next largest category from 2010. These results correspond well to comparisons between simple and weighted average component levels in Part III of this paper.

Component Value

Table 6 contains the component prices announced by the Federal orders for 2014. Table 7 indicates the overall component value for each size category using Table 6 prices and Upper Midwest producer data. Given the distribution of larger component test values at smaller sized farms, it's not surprising that the value per hundredweight is larger for all but the largest category. Table 8 shows the breakdown by component on a hundredweight basis for overall milk value. Butterfat and protein contribute the vast majority of the milk's value with other solids and somatic cell counts contributing just 11.93%.

Table 6
Monthly Component Prices and Somatic Cell Adjustment
Rates for the Upper Midwest Order Producers

2014

| <u>Month</u> | <u>Butterfat Price</u> | <u>Protein Price</u> | <u>Other Solids Price</u> | <u>Somatic Cell Adjustment Rate</u> |
|----------------|----------------------------|--------------------------|-----------------------------------|---|
| | -----(\$/Pound)----- | | | (\$/cwt. Per 1,000 SCC) |
| January | \$1.7874 | \$4.1870 | \$0.4155 | \$0.00104 |
| February | \$2.0109 | \$4.6044 | \$0.4453 | \$0.00114 |
| March | \$2.0402 | \$4.5172 | \$0.4700 | \$0.00113 |
| April | \$2.1207 | \$4.7089 | \$0.4926 | \$0.00118 |
| May | \$2.2721 | \$3.9553 | \$0.4897 | \$0.00109 |
| June | \$2.4413 | \$3.3437 | \$0.4942 | \$0.00102 |
| July | \$2.6349 | \$3.1798 | \$0.5046 | \$0.00102 |
| August | \$2.8448 | \$3.1496 | \$0.5036 | \$0.00105 |
| September | \$3.2467 | \$3.4991 | \$0.4876 | \$0.00117 |
| October | \$2.8507 | \$3.7362 | \$0.4670 | \$0.00115 |
| November | \$2.2011 | \$3.9018 | \$0.4505 | \$0.00107 |
| December | \$2.0991 | \$2.7387 | \$0.3996 | \$0.00087 |
| Simple Average | \$2.3792 | \$3.7935 | \$0.4684 | \$0.00108 |

Table 7**Aggregated Component Values by Size Range of
Monthly Producer Milk Deliveries****2014**

| <u>Size Categories</u> (Pounds) | <u>Aggregated Component Values*</u> | <u>Producer Milk</u> (Pounds) | <u>Weighted Average Value</u> (Cwt.) |
|------------------------------------|---|--------------------------------------|---|
| Up to 49,999 | \$268,609,851.41 | 1,120,666,317 | \$23.97 |
| 50,000 to 99,999 | \$793,394,761.06 | 3,336,997,539 | \$23.78 |
| 100,000 to 249,999 | \$1,701,101,400.35 | 7,183,229,605 | \$23.68 |
| 250,000 to 399,999 | \$853,101,157.44 | 3,607,813,146 | \$23.65 |
| 400,000 to 599,999 | \$739,243,287.29 | 3,141,212,735 | \$23.53 |
| 600,000 to 999,999 | \$1,034,795,705.63 | 4,405,545,802 | \$23.49 |
| 1,000,000 to 1,499,999 | \$838,828,508.95 | 3,574,094,322 | \$23.47 |
| 1,500,000 to 2,499,999 | \$1,133,676,486.22 | 4,820,676,629 | \$23.52 |
| 2,500,000 to 4,999,999 | \$1,275,537,248.55 | 5,399,208,274 | \$23.62 |
| 5,000,000 or more | \$1,294,459,972.04 | 5,410,541,115 | \$23.92 |
| Total | \$9,932,748,378.94 | 41,999,985,483 | \$23.65 |

* Total value of pounds of butterfat, protein, and other solids, adjusted for scc.

Table 8**Breakdown of Component Values of
Producer Milk Deliveries****2014**

| | Component | | | | |
|------------------|------------------|---------|--------------|--------------------|-------------|
| | Butterfat | Protein | Other Solids | Somatic Cell Count | Total Value |
| Value (\$/cwt.)* | \$9.03 | \$11.79 | \$2.69 | \$0.14 | \$23.65 |
| Percentage | 38.19% | 49.87% | 11.35% | 0.58% | 100.00% |

*Sum may not add due to rounding.

VI. TRENDS IN SOMATIC CELL COUNTS UNDER THE UPPER MIDWEST ORDER

Recently, the European Union shifted to a lower somatic cell count maximum for milk used to produce dairy products in the rest of the world, exported to their market. This shift has spurred an effort in the US to move the maximum somatic cell count from 750,000 cells per milliliter to 400,000 cells per milliliter for Grade A milk. The effects of such a move and the question over if there would be an impact at all have been part of the decision making process. The possibility of the tighter restrictions not having a substantial effect rests on the assumption that changes in the dairy industry have led to lower and lower somatic cell counts. The following data in Table 9 shows that the weighted average somatic cell counts on the Upper Midwest Federal Order have fallen over time. In addition, Table 9 indicates that the weighted standard deviation of somatic cell counts in herd data have also fallen over time. This trend means, in general, the average has fallen and the distribution has tightened up around that average in the period from 2002 to 2014.

Chart 1 indicates that in addition to a downward sloped trend line, the effect of the trend is greater than the normal seasonal shifts in monthly somatic cell count. The herd milk from producers in recent years has a seasonal high somatic cell count, usually in mid or late summer, that high point no longer rises to the winter lows of earlier years. The seasonal highs for 2010 and on are below the seasonal low for the year 2002. A trend line fitted to the data shows a downward slope of -0.7086 times the average, so after a hundred observations or months the average cell count falls by 70.86 1,000s of cells per milliliter from January of 2002 to December 2014.

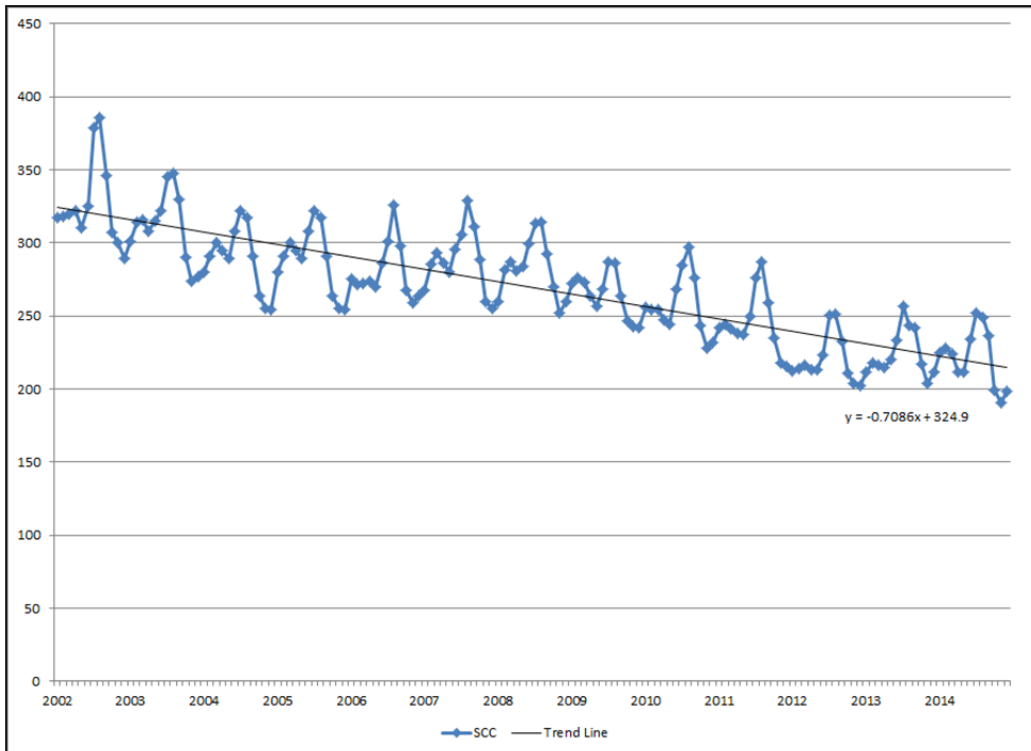
Table 9

**Weighted Average Somatic Cell Count in Milk
2002 - 2014**

| <u>Year</u> | <u>Weighted Average Somatic Cell Count</u> | <u>Weighted Average Standard Deviation</u> |
|-------------|--|--|
| | -1,000- | -1,000- |
| 2002 | 326 | 153 |
| 2003 | 312 | 144 |
| 2004 | 289 | 140 |
| 2005 | 285 | 147 |
| 2006 | 280 | 133 |
| 2007 | 288 | 137 |
| 2008 | 283 | 137 |
| 2009 | 265 | 130 |
| 2010 | 257 | 123 |
| 2011 | 245 | 115 |
| 2012 | 220 | 98 |
| 2013 | 224 | 100 |
| 2014 | 222 | 104 |

Chart 1

Weighted Average Somatic Cell Count by Month, 2002 to 2014



VII. SUMMARY

The producer payroll data for Federal Order 30 is characterized by seasonality, roughly normal distributions, and a pronounced skewness in number of producers by size. Seasonally, somatic cell counts increase in the summer months as the other tests are decreasing. The somatic cell counts are also distributed with a skewness to higher values and a median value lower than the weighted average somatic cell count. The producer data has a large number of farms producing a relatively small proportion of total milk. The component tests for these small farms has been historically higher including somatic cell counts. As a consequence of this skewness, the hundredweight component value of the milk is also higher for smaller farms. Statewide average component values reflect the makeup of the producer distribution. A recent break from historical trends is that the largest category of dairies has the highest tests and milk value.

Smaller producers, based on average monthly milk marketed, had higher butterfat tests, protein tests and scc than larger producers, while larger producers had higher other solids and snf tests than smaller producers.

The smallest producers marketed less than three percent of the milk while the largest producers, those over 1,500,000 pounds, marketed more than a third of all the milk. The monthly average pounds of milk marketed were 261,222 pounds, however over 80 percent of the producers had marketings below the market average.

Somatic cell counts under the Upper Midwest Marketing Order have shown a sustained and substantial downward trend over the period 2002 to 2014. This trend has coincided with a tightening of the distribution of somatic cell counts about the mean.

Under multiple component pricing, the annual weighted average value of butterfat, protein, and other solids, adjusted for scc, was \$23.65 per cwt. for the market. Butterfat and protein contribute most of the milk's value with other solids and scc contributing 11.93% of the total value.