



Federal Milk Market Administrator

U.S. Department of Agriculture

# UPPER MIDWEST DAIRY NEWS

Victor J. Halverson, Market Administrator

Volume 24, Issue 8

Upper Midwest Marketing Area, Federal Order No. 30

August 2023

## Inside This Issue:

National FMMO  
Public Hearing .....3-5

Computation of Producer  
Price Differential ..... 6

Utilization and Classification .. 7

Commodity Prices and  
Market Statistics ..... 8

Class Prices and  
Producer Prices ..... 9



Image by bgrfx on Freepik

## Dairy Prices Up & Stable in August

Dairy prices on the Chicago Mercantile Exchange (CME) have been up and stable in August comparing to their prices in July especially for the first three weeks of each of the months. Since the last week of July, block cheese and butter prices have gradually risen. Barrels, nonfat dry milk (NFDM) and whey prices have fluctuated slightly. All commodities were lower than their prices last year at this time, as shown in *Figure 1* on Page 2.

The CME barrel price on August 22 for cheddar cheese was \$1.81¼ per pound, up 15¾¢ from July, but down 8¼¢ below last year. Meanwhile, the 40-pound block price for cheddar cheese on the CME on August 22 was \$1.94¾ per pound, up 16½¢ from last month, and 12¾¢ above last year.

The CME butter price on August 22 was \$2.69 per pound, up 10¾¢ from last month, but down 33¢ below last year.

The August 22 CME price for NFDM on the CME was \$1.10¼ per pound, down 1¾¢ from July, and 43¢ below last year.

The CME whey price on August 22 was \$0.25½ per pound, up ¼¢ from last month but down 19½¢ below last year.

The Federal order 30 Class I price for September is \$20.70, up \$2.28 from August, but down \$4.72 from a year ago.

The August 22 CME Class III futures market has the price moving upward to \$17.22 for August, and steadily rising to \$18.00 to close out the year in December.

## National FMMO Hearing: Notice, Guidelines & Documents

<https://www.ams.usda.gov/rules-regulations/moa/dairy/hearings/national-fmmo-pricing-hearing>

View the hearing <https://www.zoomgov.com/j/1604805748>

Listen only One tap mobile : +16468287666,,1604805748#

Telephone: +1 669 254 5252 Enter Webinar ID: 160 480 5748

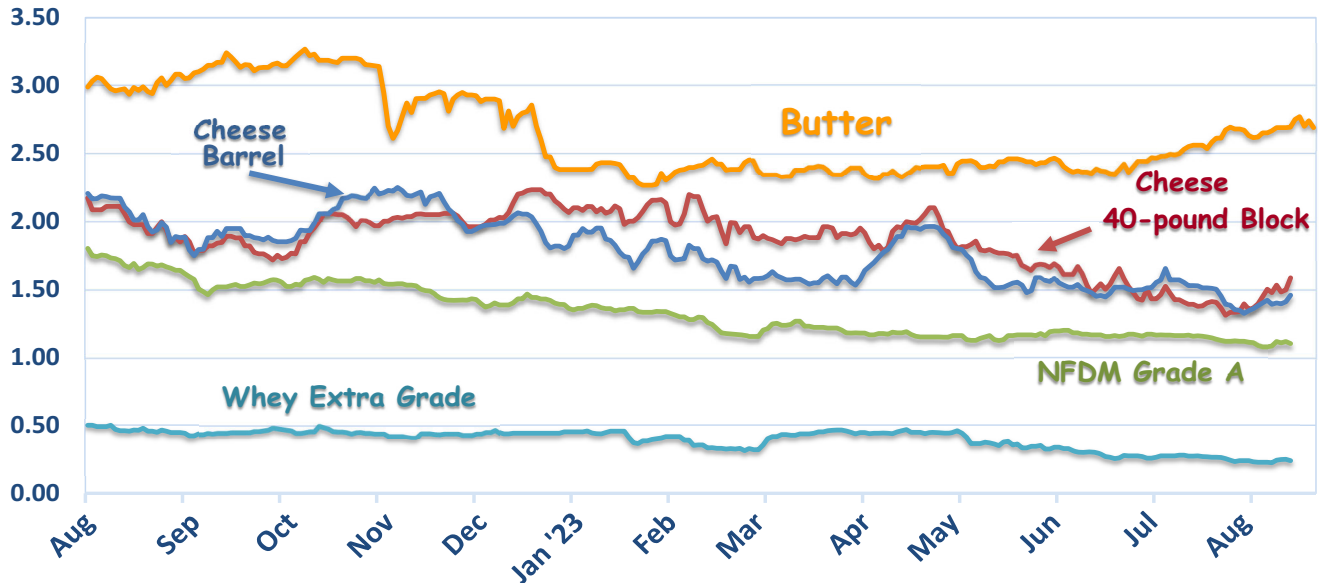
## Pool Summary

- In July, producer milk was 2.8 billion pounds, down 1.3% daily from June and up 8.0% from last July.
- Class I use was another record low, 147 million pounds, down 4.2% daily from June and 4.5% below last year. In July, Class I use was 5.3% of total producer milk.
- The July 2023 Producer Price Differential (PPD) was \$0.41 per cwt.
- The F.O. 30 Statistical Uniform Price in July was \$14.18 per cwt., down \$1.09 from June, and down \$8.75 from last year.
- Market statistics for July are shown on Pages 6 and 7.

## July 2023 Producer Milk by Class

|              | Percent | Product Pounds       | Price \$/cwt. |
|--------------|---------|----------------------|---------------|
| Class I      | 5.3     | 147,322,922          | 19.12         |
| Class II     | 1.1     | 30,903,512           | 19.12         |
| Class III    | 93.0    | 2,594,923,953        | 13.77         |
| Class IV     | 0.6     | 18,308,028           | 18.26         |
| <b>Total</b> |         | <b>2,791,458,415</b> |               |

Figure 1

Chicago Mercantile Exchange -- Selected Dairy Commodity Prices<sup>1/</sup>

<sup>1/</sup> Prices depicted are dollars per pound for each day that trading occurred from August 1, 2022 through August 22, 2023.

*Milk in the Northeast and Other Marketing Areas; Notice of Hearing*  
**Proposed Amendments to Marketing Agreements and Orders**  
<https://www.govinfo.gov/content/pkg/FR-2023-07-24/pdf/2023-15496.pdf>

### Testimony will be heard by subject areas as follows:

1. Milk Composition
2. Surveyed Commodity Products
3. Class III and Class IV Formula Factors
4. Base Class I Skim Milk Price
5. Class I and Class II Differentials

#### Dairy Farmer Witnesses

- In-Person Testimony: Any time during the hearing in 60-minute time slots. Pre-registration is not required. Notify a USDA Official upon arrival.
- Virtual Testimony: Fridays on 15-minute time slots, 10 slots/Friday, starting 9/1/2023 noon. Must pre-register. Registration available on Monday of the same week.

#### Testimony Guidelines

- <https://www.ams.usda.gov/sites/default/files/media/NationalHearing2023GuidelinesTestimonyandExhibits.pdf>

# National FMMO Public Hearing

**Beginning Date:** Wednesday, August 23, 2023, 9:00 a.m. ET  
**Venue:** 502 East Event Centre, 502 Carmel Drive, Carmel, Indiana 46302.

## Announcement Date: July 24, 2023

The U.S. Department of Agriculture (USDA) will hold a public hearing beginning Wednesday, August 23, 2023, to consider proposals seeking to amend the uniform pricing formulas applicable in all 11 Federal milk marketing orders (FMMOs). The hearing will begin at 9:00 a.m. ET at the 502 East Event Centre, 502 East Carmel Drive, Carmel, Indiana, 46032.

Proponents contend that the uniform FMMO pricing formulas should be amended, as significant changes in the dairy industry and milk marketing have occurred since their adoption in the early 2000s. Forty proposals were submitted by stakeholders for consideration. Of those, 21 directly impact the uniform pricing formulas and will be considered at the hearing. The proposals contained in the hearing notice seek to amend the milk composition factors, commodity product prices, Class III and Class IV formula factors, base Class I skim milk, and Class I and Class II differentials.

The hearing notice was published in the Federal Register on July 24, 2023. Copies of the notice, guidelines for how to participate, the hearing schedule, and the corresponding hearing record will be made available on the Hearing Website: <https://www.ams.usda.gov/rules->

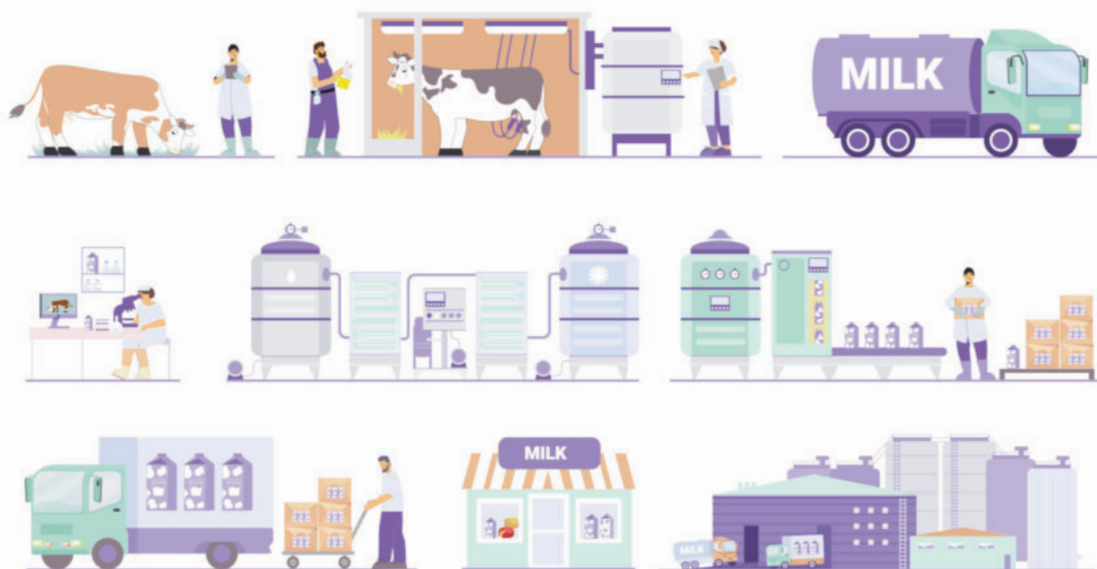
[regulations/moa/dairy/hearings/national-fmmo-pricing-hearing](https://www.ams.usda.gov/rules-regulations/moa/dairy/hearings/national-fmmo-pricing-hearing). Copies also may be obtained from USDA/AMS/Dairy Program; STOP 0225 - Rm. 2530; 1400 Independence Avenue S.W., Washington, D.C. 20250-0225.

Those interested in participating in the hearing should notify a USDA official upon arrival at the hearing. For additional information, contact Erin Taylor, Director, Order Formulation and Enforcement Division, USDA/AMS/Dairy Program, Stop 0225-Room 2530-S, 1400 Independence Avenue S.W., Washington, DC 20250-0231; (202) 720-7311; e-mail address: [Erin.Taylor@usda.gov](mailto:Erin.Taylor@usda.gov).

Persons requiring a sign language interpreter or other special accommodations should contact Jason Nierman, Market Administrator, before the hearing begins, at (502) 499-0040 ext. 2222 or email address [nierman@malouisville.com](mailto:nierman@malouisville.com).

Source: <https://www.ams.usda.gov/content/usda-sets-hearing-proposed-amendments-pricing-provisions-all-eleven-federal-milk-marketing>

*Continued to Summary of Proposals on Pages 4 - 5.*



# Summary of Proposals at the National Hearing

## 1. Milk Composition

**Proposal 1:** Submitted by the National Milk Producers Federation This proposal seeks to amend the milk component factors in the Class III and Class IV skim milk price formulas. Specifically, the proposal seeks to increase the skim component factors to equal the weighted average nonfat solids, true protein, and other solids factors for milk pooled on Federal orders using data for the three years prior to implementation, with a 12-month implementation lag.

The factors are proposed to be updated as follows:

- Nonfat solids: from 9.0 to 9.41 per hundredweight of Class IV skim milk;
- Protein: from 3.1 to 3.39 per hundredweight of Class III skim milk; and
- Other solids: from 5.9 to 6.02 per hundredweight of Class III skim milk.

The proponent also proposes the skim component factors be updated no less than every three years, but only once the weighted average nonfat solids component for the prior three years changes by at least 0.07 percentage points. The updated component values would be calculated, and, if a change is warranted, formally announced in February of such year, with the implementation of such changes occurring March 1 of the following year.

**Proposal 2:** Submitted by National All- Jersey Inc. This proposal seeks to amend the milk component factors in the Class III and Class IV skim milk price formulas. The proposal seeks to update the factors annually using the previous year's weighted average calculations, with a 12-month implementation lag.

## 2. Surveyed Commodity Products

**Proposal 3:** Submitted by the National Milk Producers Federation This proposal seeks to eliminate the Cheddar cheese 500-pound barrel price series from protein price formula.

**Proposal 4:** Submitted by the American Farm Bureau Federation This proposal seeks to add 640-pound Cheddar cheese blocks to the protein price formula.

**Proposal 5:** Submitted by the American Farm Bureau Federation This proposal seeks to add unsalted butter to the butterfat and protein price formulas.

**Proposal 6:** Submitted by the California Dairy Campaign This proposal seeks to add mozzarella to the protein price formula.

## 3. Class III and Class IV Formula Factors

**Proposal 7:** Submitted by the National Milk Producers Federation This proposal seeks to amend the manufacturing cost (make) allowances found in the four component price

formulas.

The proposal includes the following increases:

- Butterfat: from \$0.1715 to \$0.2100 per pound of butter,
- Nonfat solids: from \$0.1678 to \$0.2100 per pound of nonfat dry milk (NFDM),
- Protein: from \$0.2003 to \$0.2400 per pound of Cheddar cheese,
- Other solids: from \$0.1991 to \$0.2300 per pound of dry whey.

The requested changes are equivalent to an increase of \$0.0385 per pound in the butter make allowance, an increase of \$0.0422 per pound in the nonfat dry milk make allowance, an increase of \$0.0397 per pound in the Cheddar cheese make allowance, and an increase of \$0.0309 per pound in the dry whey make allowance.

**Proposal 8:** Submitted by the Wisconsin Cheese Makers Association This proposal seeks to update the current make allowances with a 4-year phase-in implementation schedule.

### PROPOSED MAKE ALLOWANCE LEVELS

| Product     | Current  | Year 1 | Year 2 | Year 3 | Year 4 |
|-------------|----------|--------|--------|--------|--------|
| Cheese..... | \$0.2003 | 0.2422 | 0.2561 | 0.2701 | 0.2840 |
| Whey.....   | 0.1991   | 0.2582 | 0.2778 | 0.2976 | 0.3172 |
| NFDM.....   | 0.1678   | 0.2198 | 0.2370 | 0.2544 | 0.2716 |
| Butter..... | 0.1715   | 0.2251 | 0.2428 | 0.2607 | 0.2785 |

This proposal also proposes not to adopt any of the increases described above if, prior to January 1 of that year, USDA has been provided authority and funding to conduct audited dairy product cost studies of all manufacturers of products used to set Class III and Class IV prices, has promulgated regulations implementing that authority, and has adopted make allowances pursuant thereto.

**Proposal 9:** Submitted by the International Dairy Foods Association This proposal seeks to update the current make allowances with a 4-year phase-in implementation schedule.

### PROPOSED MAKE ALLOWANCE LEVELS

| Product     | Current  | Year 1 | Year 2 | Year 3 | Year 4 |
|-------------|----------|--------|--------|--------|--------|
| Cheese..... | \$0.2003 | 0.2422 | 0.2561 | 0.2701 | 0.2840 |
| Whey.....   | 0.1991   | 0.2582 | 0.2778 | 0.2976 | 0.3172 |
| NFDM.....   | 0.1678   | 0.2198 | 0.2370 | 0.2544 | 0.2716 |
| Butter..... | 0.1715   | 0.2251 | 0.2428 | 0.2607 | 0.2785 |

This proposal also proposes not to adopt any of the increases described above if, prior to January 1 of that year, USDA has been provided authority and funding to conduct audited dairy product cost studies of all manufacturers of products used to set Class III and Class IV prices, has promulgated regulations implementing that authority,

*Continued to Page 5*



*Continued from Page 4*

and has adopted make allowances pursuant thereto.

**Proposal 10:** Submitted by Select Milk Producers, Inc. This proposal seeks to increase the butterfat recovery factor in the Class III price formula to 93 percent, which would necessitate a corresponding increase in the butterfat yield in cheese to 1.624.

**Proposal 11:** Submitted by Select Milk Producers, Inc. This proposal seeks to update the specified yield factors to reflect actual farm-to-plant shrink. The yield factors for nonfat solids and other solids would remain unchanged. The proposed yield factors are: Butterfat: 1.22; Protein value in cheese: 1.386; and Butterfat value in cheese: 1.582.

**Proposal 12:** Submitted by Select Milk Producers, Inc. This proposal seeks to update the nonfat solids factor from 0.99 to 1.03.

#### 4. Base Class I Skim Milk Price

**Proposal 13:** Submitted by the National Milk Producers Federation This proposal seeks to amend the base Class I skim milk price in all Federal orders. Specifically, the proposal seeks to replace the simple average of the Class III and Class IV Advanced Skim Milk pricing factors with the “higher of” the two factors and remove the additional \$0.74 per hundredweight.

**Proposal 14:** Submitted by the International Dairy Foods Association This proposal seeks to amend the base Class I skim milk price to equal the simple average of the Advanced Class III and Class IV prices, plus the “higher of” either \$0.74 or an adjuster equal to the 24-month (August–July) rolling simple average difference between the Advanced Class III and Class IV skim milk prices.

**Proposal 15:** Submitted by the Milk Innovation Group This proposal seeks to retain the current “average of” formula for the base Class I skim milk price and proposes to update the adjuster monthly using a 24-month look back period with a 12-month lag, i.e., the preceding the 13-to-36-month period. The “rolling” adjuster calculation would be the difference between the “higher of” the advanced Class III or IV skim milk price for each month and the “average of” the advanced Class III or IV skim milk price, averaged over the preceding 13-to-36-month period, plus the “average of” the Class III and IV advanced skim milk prices for that month.

**Proposal 16:** Submitted by Edge Dairy Farmer Cooperative This proposal seeks to change the base Class I skim milk price to the announced Class III skim milk price, plus an adjuster. The proposal seeks to amend calculation of Class I prices to use announced rather than advanced prices. The proposed adjuster would be a 36-month average (August–July) of the monthly differences between the “higher of” the advanced Class III skim milk price or advanced Class IV skim milk price, and the Class III skim milk price.

**Proposal 17:** Submitted by Edge Dairy Farmer Cooperative This proposal seeks to use the “higher of” the Class III skim milk price or the Class IV skim milk price to calculate the

base Class I skim milk price. The proposal also seeks to amend calculation of Class I prices to use announced rather than advanced prices.

**Proposal 18:** Submitted by the American Farm Bureau Federation This proposal seeks to eliminate the advanced pricing of Class I milk and components, and Class II skim milk and components. As proposed, the Class II skim milk price would be equal to the Announced Class IV skim milk price plus the Class II differential; the Class II nonfat solids price would be equal to the Announced Class IV nonfat solids price plus one-hundredth of the Class II differential. The proponent proposes the Class I skim milk price would be the “higher of” the Announced Class III or Class IV skim milk prices plus the Class I differential; and the Class I butterfat price would be equal to the butterfat price plus one-hundredth of the Class I differential.

#### 5. Class I and Class II Differentials

**Proposal 19:** Submitted by the National Milk Producers Federation This proposal seeks to update the Adjusted Class I differentials as referenced in all Federal orders for the 3,108 named counties, parishes, and independent cities in the contiguous 48 United States. The proposed update would increase Class I differentials at all locations, in varying amounts.

**Proposal 20:** Submitted by the Milk Innovation Group This proposal seeks to lower the current base Class I differential from \$1.60 to \$0.00.

**Proposal 21:** Submitted by the American Farm Bureau Federation This proposal seeks to update the Class II differential to \$1.56. Specifically, the proposal seeks to calculate the Class II differential using the current nonfat dry milk make allowance multiplied by the current nonfat solids yield factor and updated butterfat and nonfat solids tests for milk in the FMMOs.

#### 6. AMS Proposal

**Proposal 22:** Submitted by Dairy Program, Agricultural Marketing Service: Make such changes as may be necessary to make the respective marketing orders conform with any amendments thereto that may result from this hearing. From the time that a hearing notice is issued and until the issuance of a final decision in a proceeding, USDA employees involved in the decision-making process are prohibited from discussing the merits of the hearing issues on an ex parte basis with any person having an interest in the proceeding. For this proceeding, the prohibition applies to employees in the following organizational units: Office of the Secretary of Agriculture Office of the Administrator, Agricultural Marketing Service Office of the General Counsel Dairy Program, Agricultural Marketing Service (Washington, DC Office, and the Offices of all Market Administrators) Procedural matters are not subject to the above prohibition and may be discussed at any time.

Source: <https://www.govinfo.gov/content/pkg/FR-2023-07-24/pdf/2023-15496.pdf>

## Computation of Producer Price Differential - July 2023

|   | Utilization Percentage | Product Pounds | Component Pounds | Rate     | Value             |
|---|------------------------|----------------|------------------|----------|-------------------|
| <b>Class I</b>  |                        |                |                  |          |                   |
| Differential Value  |                        |                |                  |          | \$ 2,524,061.14   |
| Product   | 5.3%                   | 147,322,922    |                  |          |                   |
| Skim Milk   |                        |                | 144,256,742      | \$ 7.88  | 11,367,431.26     |
| Butterfat   |                        |                | 3,066,180        | 2.7757   | 8,510,795.85      |
| <b>Class II</b>   |                        |                |                  |          |                   |
| Product   | 1.1%                   | 30,903,512     |                  |          |                   |
| Nonfat Solids   |                        |                | 2,410,575        | 1.0711   | 2,581,966.88      |
| Butterfat   |                        |                | 4,697,793        | 2.8056   | 13,180,128.04     |
| <b>Class III</b>  |                        |                |                  |          |                   |
| Product   | 93.0%                  | 2,594,923,953  |                  |          |                   |
| Protein   |                        |                | 80,800,367       | 1.1991   | 96,887,720.05     |
| Other Solids  |                        |                | 151,355,124      | 0.0689   | 10,428,368.04     |
| Butterfat   |                        |                | 96,017,519       | 2.7986   | 268,714,628.67    |
| <b>Class IV</b>   |                        |                |                  |          |                   |
| Product   | 0.6%                   | 18,308,028     |                  |          |                   |
| Nonfat Solids   |                        |                | 933,134          | 0.9746   | 963,035.40        |
| Butterfat   |                        |                | 7,552,314        | 2.7986   | 21,135,905.96     |
| SCC Adjustment (Class II, III, and IV)                            |                        |                |                  |          | 3,229,095.89      |
| Total Producer Milk   |                        | 2,791,458,415  |                  |          | \$ 439,523,137.18 |
| Add:  |                        |                |                  |          |                   |
| Overage   |                        |                |                  |          | 39,154.01         |
| Inventory Reclassified  |                        |                |                  |          | (284,620.82)      |
| Other Source Milk \$.60(h)  |                        |                |                  |          | 0.00              |
| Other Source Milk \$.60(i)  |                        |                |                  |          | 0.00              |
| Subtract:   |                        |                |                  |          |                   |
| Transportation Credit   |                        |                |                  |          | 7,967.09          |
| Assembly Credit   |                        |                |                  |          | 116,809.56        |
| Credit for Reconstituted FMP                                      |                        |                |                  |          | 0.00              |
| Producer Milk Protein   |                        |                |                  |          | 103,851,116.80    |
| Producer Milk Other Solids  |                        |                |                  |          | 11,182,208.59     |
| Producer Milk Butterfat   |                        |                |                  |          | 311,578,789.47    |
| Producer Milk SCC Adjustment                                      |                        |                |                  |          | 3,410,763.21      |
| Total Milk and Value  |                        | 2,791,458,415  |                  |          | \$ 9,130,015.65   |
| Add:  |                        |                |                  |          |                   |
| Location Adjustment -- Producer and Unregulated Supply Plant Milk |                        |                |                  |          | 2,201,239.63      |
| One-Half Unobligated Balance Producer Settlement Fund             |                        |                |                  |          | 1,264,871.07      |
| Total Value   |                        |                |                  | 0.451238 | \$ 12,596,126.35  |
| Subtract: Producer Settlement Fund Reserve                        |                        |                |                  | 0.041238 | 1,151,146.85      |

**Producer Price Differential \*\***

**\$ 0.41**

**\$ 11,444,979.50**

\* An estimated 1.2 billion pounds of milk was not pooled.

\*\* Producer Price Differential is dollars per cwt. at the Base Zone of Cook County, Illinois.

## Upper Midwest Pool Statistics - July 2023

| Market Class I Differential Rate | Pool Plants | Received at Pool Plants | Diverted to Pool and Nonpool Plants | Total         | Location Adjustment to Producers | Class I Differential to Handlers |
|----------------------------------|-------------|-------------------------|-------------------------------------|---------------|----------------------------------|----------------------------------|
| Cwt.                             | Number      | Pounds                  | Pounds                              | Pounds        | Value                            | Pounds                           |
| \$1.80***                        | 3           | 13,068,310              | 147,831,310                         | 160,899,763   | \$ 226,878                       | 10,646,494                       |
| \$1.75                           | 25          | 83,420,844              | 1,228,973,871                       | 1,312,394,715 | 656,197                          | 45,664,566                       |
| \$1.70                           | 23          | 139,084,247             | 1,179,079,690                       | 1,318,163,937 | 1,318,164                        | 91,011,862                       |
| Total                            | 51          | 235,573,401             | 2,555,885,014                       | 2,791,458,415 | \$2,201,239                      | 147,322,922                      |

\*\*\* Includes restricted data from the \$2.00 and \$1.65 zones.

# Utilization and Classification of Milk

|   | July 2023            |                    | June 2023            | July 2022            |
|---|----------------------|--------------------|----------------------|----------------------|
|   | Product Pounds       | Butterfat Pounds   | Product Pounds       | Product Pounds       |
| <b>Class I Utilization:</b>               |                      |                    |                      |                      |
| Packaged Disposition                      |                      |                    |                      |                      |
| Milk                                      | 37,187,227           | 1,234,810          | 36,832,015           | 35,567,792           |
| Flavored Milk                             | 2,962,501            | 97,621             | 2,893,316            | 3,103,196            |
| Reduced Fat Milk                          | 54,792,906           | 1,074,969          | 54,847,295           | 57,189,328           |
| Lowfat Milk                               | 26,737,703           | 255,315            | 27,456,155           | 27,769,293           |
| Fat Free Milk                             | 15,454,072           | 16,488             | 15,764,160           | 17,362,983           |
| Flavored Reduced and Fat Free Milk        | 10,283,468           | 126,538            | 10,870,520           | 11,590,850           |
| Buttermilk                                | 1,530,826            | 15,979             | 1,620,907            | 1,522,275            |
| Total Packaged Disposition                | 148,948,703          | 2,821,720          | 150,284,368          | 154,105,717          |
| Total Ending Inventory                    | 15,475,145           | 264,571            | 16,351,966           | 17,114,216           |
| Bulk to Nonpool Plants                    | 1,289,554            | 175,163            | 887,161              | 719,173              |
| Shrinkage                                 | 1,094,125            | 152,824            | 1,078,460            | 1,808,155            |
| Total Class I Utilization                 | 166,807,527          | 3,414,278          | 168,601,955          | 173,747,261          |
| Other Order Plants                        | (3,156,089)          | (62,184)           | (3,601,343)          | (3,303,115)          |
| Beginning Inventory                       | (16,351,966)         | (285,295)          | (15,995,689)         | (16,233,210)         |
| Reused Products                           | 0                    | 0                  | 0                    | 0                    |
| Other Source Milk                         | (122,857)            | (2,212)            | (129,518)            | (150,233)            |
| Overage                                   | 0                    | 0                  | 0                    | 0                    |
| Interhandler Adjustment                   | 146,307              | 1,593              | 5,845                | 144,838              |
| <b>Class I Producer Milk</b>              | <b>147,322,922</b>   | <b>3,066,180</b>   | <b>148,881,250</b>   | <b>154,205,541</b>   |
| <b>Class II Utilization:</b>              |                      |                    |                      |                      |
| Total Class II Utilization                | 35,928,520           | 5,188,245          | 34,754,972           | 31,132,655           |
| Other Order Plants                        | (145,001)            | (57,393)           | (225,170)            | --                   |
| Beginning Inventory                       | (1,216,987)          | (115,646)          | (3,546,427)          | (1,211,353)          |
| Reused Products                           | (3,314,386)          | (1,989)            | (3,552,160)          | (3,316,045)          |
| Other Source Milk                         | (315,424)            | (315,424)          | (465,419)            | (130,043)            |
| Overage                                   | (33,210)             | 0                  | (2,241)              | 0                    |
| <b>Class II Producer Milk</b>             | <b>30,903,512</b>    | <b>4,697,793</b>   | <b>26,963,555</b>    | <b>26,475,214</b>    |
| <b>Class III Utilization:</b>             |                      |                    |                      |                      |
| Total Class III Utilization               | 2,607,181,468        | 96,099,377         | 2,556,344,699        | 2,382,414,475        |
| Other Order Plants                        | (2,359,675)          | (15,048)           | (3,273,580)          | --                   |
| Beginning Inventory                       | (6,231,149)          | (6,928)            | (8,615,518)          | (4,605,186)          |
| Reused Products                           | 0                    | 0                  | 0                    | --                   |
| Other Source Milk                         | (3,616,647)          | (53,422)           | (550,631)            | (3,424,980)          |
| Overage                                   | (50,044)             | (6,460)            | (363,494)            | (25,131)             |
| <b>Class III Producer Milk</b>            | <b>2,594,923,953</b> | <b>96,017,519</b>  | <b>2,543,541,476</b> | <b>2,374,359,178</b> |
| <b>Class IV Utilization:</b>              |                      |                    |                      |                      |
| Total Class IV Utilization                | 180,073,183          | 16,317,894         | 170,257,083          | 181,309,163          |
| Other Order Plants                        | (2,778,952)          | (139,843)          | (2,997,830)          | (3,499,972)          |
| Beginning Inventory                       | (4,125,719)          | (635,609)          | (6,339,921)          | (7,287,198)          |
| Reused Products                           | 0                    | 0                  | 0                    | 0                    |
| Other Source Milk                         | (154,822,468)        | (7,985,427)        | (143,923,757)        | (141,240,379)        |
| Overage                                   | (38,016)             | (4,701)            | (23,994)             | (37,758)             |
| <b>Class IV Producer Milk</b>             | <b>18,308,028</b>    | <b>7,552,314</b>   | <b>16,971,581</b>    | <b>29,243,856</b>    |
| <b>Total Producer Milk -- All Classes</b> | <b>2,791,458,415</b> | <b>111,333,806</b> | <b>2,736,357,862</b> | <b>2,584,283,789</b> |

-- Restricted Information

# Commodity Prices

| Month/Year | Weighted Monthly Average Prices |         |         |        |          |          | Weighted Two-Week Average Prices |         |         |        |          |          |
|------------|---------------------------------|---------|---------|--------|----------|----------|----------------------------------|---------|---------|--------|----------|----------|
|            | Cheddar Cheese                  |         |         | Nonfat |          |          | Cheddar Cheese                   |         |         | Nonfat |          |          |
|            | Blocks                          | Barrels | Average | Butter | Dry Milk | Dry Whey | Blocks                           | Barrels | Average | Butter | Dry Milk | Dry Whey |
|            | <i>Dollars per Pound</i>        |         |         |        |          |          | <i>Dollars per Pound</i>         |         |         |        |          |          |
| Jul 2023   | 2.1622                          | 2.2054  | 2.2019  | 2.9461 | 1.8001   | 0.5482   | 2.1822                           | 2.2270  | 2.2234  | 2.9697 | 1.8324   | 0.5348   |
| Aug        | 1.9484                          | 1.9698  | 1.9761  | 2.9792 | 1.6690   | 0.5045   | 1.9999                           | 1.9994  | 2.0161  | 2.9957 | 1.7190   | 0.5069   |
| Sep        | 1.8835                          | 1.9830  | 1.9503  | 3.1156 | 1.5803   | 0.4902   | 1.8308                           | 1.9241  | 1.8940  | 3.1171 | 1.5895   | 0.4892   |
| Oct        | 2.0453                          | 2.2210  | 2.1560  | 3.1911 | 1.5819   | 0.4857   | 2.0303                           | 2.2170  | 2.1451  | 3.2082 | 1.5829   | 0.4869   |
| Nov        | 2.0748                          | 2.0744  | 2.0897  | 2.9560 | 1.5045   | 0.4745   | 2.0561                           | 2.0613  | 2.0735  | 2.8921 | 1.4902   | 0.4749   |
| Dec        | 2.1594                          | 1.9293  | 2.0555  | 2.7759 | 1.4559   | 0.4566   | 2.1755                           | 1.9429  | 2.0660  | 2.8822 | 1.4722   | 0.4648   |
| Jan 2023   | 2.1147                          | 1.8226  | 1.9767  | 2.4599 | 1.3662   | 0.4266   | 2.1208                           | 1.8494  | 1.9953  | 2.4828 | 1.4025   | 0.4444   |
| Feb        | 1.9874                          | 1.6602  | 1.8224  | 2.4158 | 1.2553   | 0.4031   | 1.9772                           | 1.6600  | 1.8191  | 2.4219 | 1.2449   | 0.3986   |
| Mar        | 1.9503                          | 1.7188  | 1.8399  | 2.4258 | 1.1935   | 0.4261   | 1.9489                           | 1.6492  | 1.8012  | 2.4190 | 1.2197   | 0.4221   |
| Apr        | 1.9406                          | 1.7942  | 1.8775  | 2.4018 | 1.1551   | 0.4398   | 1.9976                           | 1.9101  | 1.9675  | 2.4059 | 1.1868   | 0.4538   |
| May        | 1.7277                          | 1.5715  | 1.6600  | 2.4483 | 1.1505   | 0.3813   | 1.7729                           | 1.5933  | 1.6920  | 2.4351 | 1.1531   | 0.3998   |
| Jun        | 1.5568                          | 1.5561  | 1.5724  | 2.4510 | 1.1674   | 0.3220   | 1.5498                           | 1.5537  | 1.5677  | 2.4636 | 1.1712   | 0.3199   |
| Jul        | 1.4614                          | 1.4789  | 1.4870  | 2.4825 | 1.1522   | 0.2660   | 1.4200                           | 1.4636  | 1.4601  | 2.4478 | 1.1725   | 0.2671   |
| Aug        |                                 |         |         |        |          |          | 1.8884                           | 1.8045  | 1.8617  | 2.6628 | 1.1374   | 0.2654   |

| Month/Year | Chicago Mercantile Exchange |                |         |         |             | USDA Dairy Market News |        |             |         |        |
|------------|-----------------------------|----------------|---------|---------|-------------|------------------------|--------|-------------|---------|--------|
|            | Butter                      | Cheddar Cheese |         | NFDM    | Whey        | NFDM Low/Medium Heat   |        | Whey Powder |         |        |
|            | Grade AA                    | Blocks         | Barrels | Grade A | Extra Grade | Central & East         | West   | Northeast   | Central | West   |
|            | <i>Dollars per Pound</i>    |                |         |         |             |                        |        |             |         |        |
| Jul 2022   | 2.9506                      | 2.0143         | 2.0581  | 1.6984  | 0.4694      | 1.7705                 | 1.7450 | 0.5545      | 0.5070  | 0.5266 |
| Aug        | 3.0072                      | 1.8104         | 1.8741  | 1.5401  | 0.4504      | 1.5937                 | 1.5845 | 0.4998      | 0.4538  | 0.4905 |
| Sep        | 3.1483                      | 1.9548         | 2.0690  | 1.5598  | 0.4564      | 1.5650                 | 1.5798 | 0.5018      | 0.4419  | 0.4904 |
| Oct        | 3.1792                      | 2.0260         | 2.1285  | 1.4785  | 0.4312      | 1.5345                 | 1.5396 | 0.4717      | 0.4339  | 0.4671 |
| Nov        | 2.8634                      | 2.1186         | 1.9454  | 1.4056  | 0.4434      | 1.4378                 | 1.4754 | 0.4635      | 0.4418  | 0.4658 |
| Dec        | 2.6695                      | 2.0860         | 1.8395  | 1.3512  | 0.4248      | 1.3922                 | 1.4272 | 0.4474      | 0.4032  | 0.4529 |
| Jan 2023   | 2.3553                      | 2.0024         | 1.6803  | 1.2279  | 0.3501      | 1.2948                 | 1.3412 | 0.4198      | 0.3779  | 0.4110 |
| Feb        | 2.4017                      | 1.8895         | 1.5761  | 1.2257  | 0.4342      | 1.2242                 | 1.2666 | 0.3926      | 0.3789  | 0.4074 |
| Mar        | 2.3692                      | 1.9372         | 1.8175  | 1.1662  | 0.4449      | 1.2049                 | 1.1935 | 0.4326      | 0.4224  | 0.4406 |
| Apr        | 2.3655                      | 1.7574         | 1.5921  | 1.1499  | 0.3709      | 1.1563                 | 1.1459 | 0.4494      | 0.4163  | 0.4300 |
| May        | 2.4293                      | 1.5719         | 1.5073  | 1.1706  | 0.2958      | 1.1559                 | 1.1576 | 0.4225      | 0.3477  | 0.3722 |
| Jun        | 2.3902                      | 1.4039         | 1.5037  | 1.1488  | 0.2648      | 1.1671                 | 1.1565 | 0.3560      | 0.2923  | 0.3302 |
| Jul        | 2.5598                      | 1.6209         | 1.5404  | 1.1164  | 0.2438      | 1.1183                 | 1.1090 | 0.2759      | 0.2451  | 0.2893 |

# Market Statistics

| Month/Year | Distributing Plants | Supply Plants | Coop .9(c) Handlers | Producers | Total Producer Milk | Est. Average Daily Delivery Per Producer | Class I Utilization | Butterfat Test | Protein Test | Other Solids Test | Weighted Average SCC |
|------------|---------------------|---------------|---------------------|-----------|---------------------|--|---------------------|----------------|--------------|-------------------|----------------------|
|            |                     |               |                     |           | Mil. lbs.           | Pounds                                   | Percent             | Percent        | Percent      | Percent           |                      |
|            |                     |               |                     |           |                     |  |                     |                |              | (000)             |                      |
| May 2022   | 12                  | 41            | 9                   | 4,490     | 2,075               | 14,898                                   | 9.5                 | 4.02           | 3.15         | 5.80              | 161                  |
| Jun        | 12                  | 41            | 9                   | 5,587     | 2,488               | 14,811                                   | 6.6                 | 3.95           | 3.12         | 5.80              | 177                  |
| Jul        | 11                  | 41            | 9                   | 5,841     | 2,584               | 14,241                                   | 6.0                 | 3.92           | 3.08         | 5.78              | 193                  |
| Aug        | 10                  | 44            | 9                   | 5,997     | 2,896               | 15,299                                   | 5.8                 | 3.96           | 3.11         | 5.80              | 199                  |
| Sep        | 10                  | 44            | 9                   | 6,014     | 2,774               | 15,358                                   | 6.1                 | 4.05           | 3.18         | 5.79              | 190                  |
| Oct        | 10                  | 44            | 10                  | 5,964     | 2,875               | 15,530                                   | 5.9                 | 4.19           | 3.27         | 5.77              | 171                  |
| Nov        | 10                  | 44            | 9                   | 6,543     | 2,977               | 15,153                                   | 5.7                 | 4.25           | 3.31         | 5.78              | 166                  |
| Dec        | 10                  | 44            | 10                  | 6,618     | 3,175               | 15,409                                   | 5.6                 | 4.32           | 3.33         | 5.77              | 163                  |
| Jan 2023   | 10                  | 44            | 10                  | 6,415     | 3,078               | 15,474                                   | 5.6                 | 4.26           | 3.29         | 5.76              | 161                  |
| Feb        | 10                  | 43            | 9                   | 5,914     | 2,708               | 16,347                                   | 5.7                 | 4.25           | 3.29         | 5.76              | 161                  |
| Mar        | 10                  | 42            | 9                   | 5,913     | 3,036               | 16,564                                   | 5.7                 | 4.24           | 3.23         | 5.79              | 180                  |
| Apr        | 10                  | 41            | 9                   | 5,198     | 2,447               | 15,694                                   | 6.4                 | 4.19           | 3.22         | 5.80              | 162                  |
| May        | 10                  | 41            | 9                   | 5,555     | 2,790               | 16,205                                   | 5.8                 | 4.12           | 3.19         | 5.77              | 168                  |
| Jun        | 10                  | 41            | 9                   | 5,586     | 2,736               | 16,329                                   | 5.4                 | 4.01           | 3.13         | 5.80              | 177                  |
| Jul        | 10                  | 41            | 9                   |           | 2,791               |  | 5.3                 | 3.99           | 3.10         | 5.81              | 185                  |



# Class Prices

| Month/Year | Class I Price Mover |             |             | Class I Price at Cook County, IL |             |             | Class II Price |               |             |             |
|------------|---------------------|-------------|-------------|----------------------------------|-------------|-------------|----------------|---------------|-------------|-------------|
|            | Butterfat           | Skim Milk   | 3.50%       | Butterfat                        | Skim Milk   | 3.50%       | Butterfat      | Nonfat Solids | Skim Milk   | 3.50%       |
|            | <i>lb.</i>          | <i>cwt.</i> | <i>cwt.</i> | <i>lb.</i>                       | <i>cwt.</i> | <i>cwt.</i> | <i>lb.</i>     | <i>lb.</i>    | <i>cwt.</i> | <i>cwt.</i> |
| Jul 2022   | 3.3543              | 14.64       | 25.87       | 3.3723                           | 16.44       | 27.67       | 3.3670         | 1.7133        | 15.42       | 26.66       |
| Aug        | 3.3886              | 13.75       | 25.13       | 3.4066                           | 15.55       | 26.93       | 3.4071         | 1.7256        | 15.53       | 26.91       |
| Sep        | 3.4201              | 12.07       | 23.62       | 3.4381                           | 13.87       | 25.42       | 3.5723         | 1.6133        | 14.52       | 26.51       |
| Oct        | 3.5671              | 10.60       | 22.71       | 3.5851                           | 12.40       | 24.51       | 3.6637         | 1.4856        | 13.37       | 25.73       |
| Nov        | 3.6774              | 11.63       | 24.09       | 3.6954                           | 13.43       | 25.89       | 3.3790         | 1.4789        | 13.31       | 24.67       |
| Dec        | 3.2946              | 11.45       | 22.58       | 3.3126                           | 13.25       | 24.38       | 3.1609         | 1.3867        | 12.48       | 23.11       |
| Jan 2023   | 3.2827              | 11.32       | 22.41       | 3.3007                           | 13.12       | 24.21       | 2.7783         | 1.3689        | 12.32       | 21.61       |
| Feb        | 2.7990              | 11.38       | 20.78       | 2.8170                           | 13.18       | 22.58       | 2.7248         | 1.3000        | 11.70       | 20.83       |
| Mar        | 2.7252              | 9.79        | 18.99       | 2.7432                           | 11.59       | 20.79       | 2.7370         | 1.1444        | 10.30       | 19.52       |
| Apr        | 2.7217              | 9.66        | 18.85       | 2.7397                           | 11.46       | 20.65       | 2.7079         | 1.1189        | 10.07       | 19.20       |
| May        | 2.7059              | 10.47       | 19.57       | 2.7239                           | 12.27       | 21.37       | 2.7642         | 1.0867        | 9.78        | 19.11       |
| Jun        | 2.7412              | 8.72        | 18.01       | 2.7592                           | 10.52       | 19.81       | 2.7675         | 1.0533        | 9.48        | 18.83       |
| Jul        | 2.7757              | 7.88        | 17.32       | 2.7937                           | 9.68        | 19.12       | 2.8056         | 1.0711        | 9.64        | 19.12       |
| Aug        | 2.7566              | 7.22        | 16.62       | 2.7746                           | 9.02        | 18.42       |                | 1.0722        | 9.65        |             |
| Sep        | 3.0170              | 8.64        | 18.90       | 3.0350                           | 10.44       | 20.70       |                | 1.0378        | 9.34        |             |

| Month/Year | Class III Price |            |              |             |             | Class IV Price |               |             |             |  |
|------------|-----------------|------------|--------------|-------------|-------------|----------------|---------------|-------------|-------------|--|
|            | Butterfat       | Protein    | Other Solids | Skim Milk   | 3.50%       | Butterfat      | Nonfat Solids | Skim Milk   | 3.50%       |  |
|            | <i>lb.</i>      | <i>lb.</i> | <i>lb.</i>   | <i>cwt.</i> | <i>cwt.</i> | <i>lb.</i>     | <i>lb.</i>    | <i>cwt.</i> | <i>cwt.</i> |  |
| Jul 2022   | 3.3600          | 2.9116     | 0.3596       | 11.15       | 22.52       | 3.3600         | 1.6160        | 14.54       | 25.79       |  |
| Aug        | 3.4001          | 2.1417     | 0.3146       | 8.50        | 20.10       | 3.4001         | 1.4862        | 13.38       | 24.81       |  |
| Sep        | 3.5653          | 1.8847     | 0.2998       | 7.61        | 19.82       | 3.5653         | 1.3984        | 12.59       | 24.63       |  |
| Oct        | 3.6567          | 2.4512     | 0.2952       | 9.34        | 21.81       | 3.6567         | 1.4000        | 12.60       | 24.96       |  |
| Nov        | 3.3720          | 2.5374     | 0.2837       | 9.54        | 21.01       | 3.3720         | 1.3233        | 11.91       | 23.30       |  |
| Dec        | 3.1539          | 2.6568     | 0.2652       | 9.80        | 20.50       | 3.1539         | 1.2752        | 11.48       | 22.12       |  |
| Jan 2023   | 2.7713          | 2.8058     | 0.2343       | 10.08       | 19.43       | 2.7713         | 1.1864        | 10.68       | 20.01       |  |
| Feb        | 2.7178          | 2.3650     | 0.2101       | 8.57        | 17.78       | 2.7178         | 1.0766        | 9.69        | 18.86       |  |
| Mar        | 2.7300          | 2.4085     | 0.2338       | 8.85        | 18.10       | 2.7300         | 1.0154        | 9.14        | 18.38       |  |
| Apr        | 2.7009          | 2.5603     | 0.2479       | 9.40        | 18.52       | 2.7009         | 0.9774        | 8.80        | 17.95       |  |
| May        | 2.7572          | 1.8002     | 0.1877       | 6.69        | 16.11       | 2.7572         | 0.9729        | 8.76        | 18.10       |  |
| Jun        | 2.7605          | 1.5144     | 0.1266       | 5.44        | 14.91       | 2.7605         | 0.9896        | 8.91        | 18.26       |  |
| Jul        | 2.7986          | 1.1991     | 0.0689       | 4.12        | 13.77       | 2.7986         | 0.9746        | 8.77        | 18.26       |  |

# Producer Prices

| Month/Year | Producer Price Differential | Statistical Uniform Price (at 3.50%) | Butterfat Price   | Protein Price     | Other Solids Price | SCC Adjustment Rate | Producer Mailbox Price (at test) |
|------------|-----------------------------|--------------------------------------|-------------------|-------------------|--------------------|---------------------|----------------------------------|
|            | <i>\$ per cwt.</i>          | <i>\$ per cwt.</i>                   | <i>\$ per lb.</i> | <i>\$ per lb.</i> | <i>\$ per lb.</i>  | <i>\$ per cwt.</i>  | <i>\$ per cwt.</i>               |
| May2022    | 0.13                        | 25.34                                | 3.1056            | 3.8696            | 0.4857             | 0.00121             | 26.74                            |
| Jun        | 0.30                        | 24.63                                | 3.3323            | 3.4173            | 0.4295             | 0.00117             | 25.59                            |
| Jul        | 0.41                        | 22.93                                | 3.3600            | 2.9116            | 0.3596             | 0.00110             | 23.80                            |
| Aug        | 0.50                        | 20.60                                | 3.4001            | 2.1417            | 0.3146             | 0.00099             | 21.93                            |
| Sep        | 0.46                        | 20.28                                | 3.5653            | 1.8847            | 0.2998             | 0.00098             | 22.13                            |
| Oct        | 0.22                        | 22.03                                | 3.6567            | 2.4512            | 0.2952             | 0.00108             | 24.53                            |
| Nov        | 0.29                        | 21.30                                | 3.3720            | 2.5374            | 0.2837             | 0.00104             | 23.86                            |
| Dec        | 0.23                        | 20.73                                | 3.1539            | 2.6568            | 0.2652             | 0.00103             | 24.52                            |
| Jan 2023   | 0.25                        | 19.68                                | 2.7713            | 2.8058            | 0.2343             | 0.00099             | 21.95                            |
| Feb        | 0.31                        | 18.09                                | 2.7178            | 2.3650            | 0.2101             | 0.00091             | 20.22                            |
| Mar        | 0.19                        | 18.29                                | 2.7300            | 2.4085            | 0.2338             | 0.00092             | 20.41                            |
| Apr        | 0.12                        | 18.64                                | 2.7009            | 2.5603            | 0.2479             | 0.00094             | 20.10                            |
| May        | 0.38                        | 16.49                                | 2.7572            | 1.8002            | 0.1877             | 0.00083             | 17.74                            |
| Jun        | 0.36                        | 15.27                                | 2.7605            | 1.5144            | 0.1266             | 0.00079             |                                  |
| Jul        | 0.41                        | 14.18                                | 2.7986            | 1.1991            | 0.0689             | 0.00074             |                                  |

# Summary of Federal Order Data - July 2023

| Federal Order Number / Name          | Producer Deliveries<br><i>— Thousand Pounds —</i> | Class I Producer Receipts<br><i>— Thousand Pounds —</i> | Class I Utilization<br><i>Percent</i> | Class I Price<br><i>— Dollars per Cwt. —</i> | Producer Price Differential<br><i>— Dollars per Cwt. —</i> | Uniform or Statistical Uniform Price at 3.5% Butterfat |   |                           |
|--------------------------------------|---|---|---------------------------------------|--|--|--|---|---------------------------|
|                                      |   |   |                                       |  |  | FOB Market<br><i>— Dollars per Cwt. —</i>              | FOB Cook Cty. Illinois<br><i>— Dollars per Cwt. —</i> | Change From Previous Year |
| 1 Northeast                          | 2,323,082   | 615,558   | 26.5                                  | \$ 20.57                                     | \$4.46   | \$ 18.23   | \$ 16.78  | (\$8.13)                  |
| 5 Appalachian                        | 431,177   | 288,616   | 66.9                                  | 20.72  | n/a  | 19.85  | 18.25   | (8.29)                    |
| 6 Florida                            | 191,277   | 154,898   | 81.0                                  | 22.72  | n/a  | 21.91  | 18.31   | (8.38)                    |
| 7 Southeast                          | 272,202   | 195,665   | 71.9                                  | 21.12  | n/a  | 20.52  | 18.52   | (8.19)                    |
| <b>30 Upper Midwest</b>              | <b>2,791,458</b>                                  | <b>147,323</b>  | <b>5.3</b>                            | <b>19.12</b>                                 | <b>0.41</b>  | <b>14.18</b>   | <b>14.18</b>  | <b>(8.75)</b>             |
| 32 Central                           | 1,259,499   | 319,415   | 25.4                                  | 19.32  | 2.11   | 15.88  | 15.68   | (8.43)                    |
| 33 Mideast                           | 1,394,560   | 492,239   | 35.3                                  | 19.32  | 2.47   | 16.24  | 16.04   | (8.46)                    |
| 51 California                        | 2,016,040   | 349,271   | 17.3                                  | 19.42  | 1.76   | 15.53  | 15.23   | (8.69)                    |
| 124 Pacific Northwest                | 620,872   | 122,787   | 19.8                                  | 19.22  | 2.42   | 16.19  | 16.09   | (8.29)                    |
| 126 Southwest                        | 1,084,319   | 276,604   | 25.5                                  | 20.32  | 2.56   | 16.33  | 15.13   | (8.47)                    |
| 131 Arizona                          | 417,290   | 114,442   | 27.4                                  | 19.67  | n/a  | 17.48  | 16.93   | (7.96)                    |
| <b>All Market Average or Total *</b> | <b>12,801,775</b>                                 | <b>3,076,818</b>  | <b>24.0</b>                           |  |  |  |   |                           |

n/a = Not applicable.

\* May not add due to rounding.

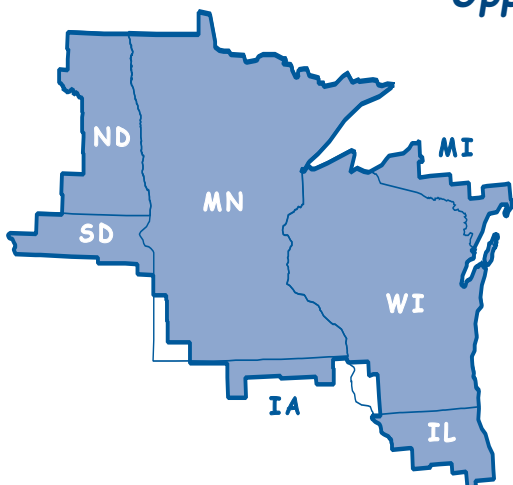
In accordance with Federal civil rights law and U.S. Department of Agriculture (USDA) civil rights regulations and policies, the USDA, its Agencies, offices, and employees, and institutions participating in or administering USDA programs are prohibited from discriminating based on race, color, national origin, religion, sex, gender identity (including gender expression), sexual orientation, disability, age, marital status, family/parental status, income derived from a public assistance program, political beliefs, or reprisal or retaliation for prior civil rights activity, in any program or activity conducted or funded by USDA (not all bases apply to all programs). Remedies and complaint filing deadlines vary by program or incident.

Persons with disabilities who require alternative means of communication for program information (e.g., Braille, large print, audiotape, American Sign Language, etc.) should contact the responsible Agency or USDA's TARGET Center at (202) 720-2600 (voice and TTY) or contact USDA through the Federal Relay Service at (800) 877-8339. Additionally, program information may be made available in languages other than English.

To file a program discrimination complaint, complete the USDA Program Discrimination Complaint Form, AD-3027, online at [http://www.ascr.usda.gov/complaint\\_filing\\_cust.html](http://www.ascr.usda.gov/complaint_filing_cust.html) and at any USDA office or write a letter addressed to USDA and provide in the letter all of the information requested in the form. To request a copy of the complaint form, call (866) 632-9992. Submit your completed form or letter to USDA by (1) mail: U.S. Department of Agriculture, Office of the Assistant Secretary for Civil Rights, 1400 Independence Avenue, SW, Washington, D.C. 20250-9410; (2) fax: (202) 690-7442; or (3) email: [program.intake@usda.gov](mailto:program.intake@usda.gov).

USDA is an equal opportunity provider, employer, and lender.

## Upper Midwest Marketing Area F.O. 30



Phone: (952) 831-5292  
 Fax: (952) 831-8249  
 Website: [www.fmma30.com](http://www.fmma30.com)



Image by bgrfx on Freepik