



UPPER MIDWEST DAIRY NEWS

H. Paul Kyburz, Market Administrator

Volume 14, Issue 9

Upper Midwest Marketing Area, Federal Order No. 30

September 2013

Inside This Issue:

Computation of Producer Price Differential 4

Utilization and Classification..... 5

Commodity Prices and Market Statistics..... 6

Class Prices and Producer Prices 7



Somatic Cell Counts in the Milk Supply *

Bulk-tank somatic cell count (BTSCC) refers to the number of white blood cells (primarily macrophages and leukocytes), secretory cells, and squamous cells per milliliter of raw milk. BTSCCs are used as a measure of milk quality and as indicators of overall udder health. There is an inverse relationship between BTSCCs and cheese yield and the quality/shelf-life of pasteurized fluid milk. Numerous studies have also shown that operations with increased BTSCCs are more likely to have milk that violates antibiotic residue standards. The most frequently cited reason for antibiotic residues in milk is placing cows treated with antibiotics in the milking string before the recommended withdrawal period.

To ensure high-quality dairy products, BTSCCs are monitored in milk shipments using standards outlined in the U.S. Pasteurized Milk Ordinance (PMO). In the United States, the legal maximum BTSCC for Grade A milk shipments is 750,000 cells/mL. If a producer has two out of four shipments that test above the maximum (usually tested 30 to 45 days apart) a written notice is issued and an additional sample is tested within 21 days. If three of the last five counts exceed the maximum, regulatory action is required, which includes:

- Suspend the producer's permit, or
- Forego permit suspension, provided the milk in violation is not sold as Grade A, or
- Impose monetary penalty in lieu of permit suspension, provided the milk in violation is not sold or offered for sale as Grade A product.

Maximum BTSCC levels for other countries is 400,000 cells/mL in the European Union (EU), Australia, New Zealand, and Canada. The maximum BTSCC level in Brazil is 1,000,000 cells/mL.

Although there has been increasing support in the last few years for lowering the maximum BTSCC for Grade A milk in the United States to 400,000 cells/mL, no changes have been made to the PMO. In May 2013, the National Conference on Interstate Milk Shipments did not lower the U.S. limit, despite EU regulations requiring a 400,000 cells/mL limit that went into effect on January 1, 2012.

EU regulations are also centered on testing milk from individual farms but require adherence to a 3-month geometric mean BTSCC of less than 400,000 cells/mL. EU member states have some

Continued on Page 2

Pool Summary

- In August, producer milk totaled 2.9 billion pounds, up 19 million pounds from July, and 650 million pounds above August 2012.
- Class I utilization totaled 308 million pounds, up 5.9% on a daily basis from July. Class I usage accounted for 10.6% of producer milk.
- Class III utilization totaled 2.5 billion pounds and accounted for 87.1% of producer milk.
- The August Producer Price Differential (PPD) was \$0.34 per cwt.
- The Statistical Uniform Price was \$18.25 per cwt., up \$0.47 from July, and \$0.56 above August 2012.
- Market statistics for August are shown on Pages 4 and 5.

August 2013 Producer Milk by Class

	Percent	Product Pounds	Price \$/cwt.
Class I	10.6	307,805,268	20.68
Class II	1.8	52,954,129	19.27
Class III	87.1	2,536,207,419	17.91
Class IV	0.5	14,612,193	19.07
Total		2,911,579,009	

Continued from Page 1

latitude in formulating the specific details of their individual programs.

U.S. producers that have four consecutive rolling 3-month SCC means greater than the 400,000 cells/mL limit cannot export milk to the EU unless derogation is requested and approved. If derogation is not approved, the milk supplier must suspend, segregate, or discontinue certification.

A few states have reduced or are in the process of reducing the SCC limit for producers in their states. These states include California, Idaho, Montana, Nevada, Oregon, and Washington.

Table 1: Percentage of Milk and Shipments Marketed Through Monitored FMO's During 2012

FMO	Milk			Shipments	
	Billion pounds	Pct. Monitored	Pct. of U.S. Production	Number (x1,000)	Pct.
Upper Midwest	43.5	45.8	21.7	188.1	60.8
Central	15.7	16.6	7.9	37.1	12.0
Mideast	18.3	19.3	9.1	76.5	24.7
Southwest	17.3	18.3	8.7	7.6	2.5
Total	94.8	100.0	47.4	309.3	100.0

In addition, the EU also has regulations on bacterial standard plate counts. For these regulations, a 2-month geometric mean is used based on a minimum of two standard plate counts performed monthly. The bacterial limit for the EU is 100,000 cells/mL, which is also the limit for Grade A milk in the United States; however, the United States and the EU calculate compliance differently.

Monitored Federal Milk Marketing Orders

In 2012, four Federal Milk Marketing Orders (FMOs) were monitored: Central, Mideast, Southwest, and Upper Midwest. These FMOs monitored milk from 28,274 producers located in 31 states and accounted for 94.8 billion pounds (47.4%) of the 200.3 billion pounds of milk produced in the United States in 2012. Each of the 31 states marketed at least one shipment through the monitored FMOs during 2012.

Figure 1: Milk-Weighted and Producer BTSCC, 2007-12

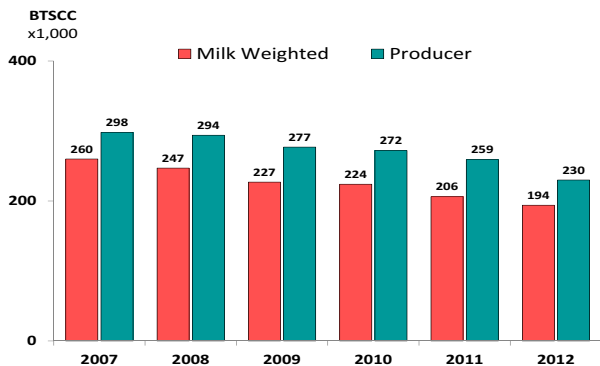


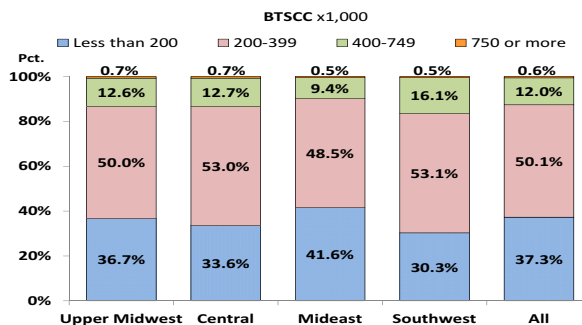
Table 2: Percentage of Milk, Shipments, and Producers by BTSCC Level During 2012

BTSCC (x1,000 cells/mL)	Milk (94.8 bil. lb)	Percent Shipments (309,343)	Producers* (28,274)
Less than 100	5.5	5.2	0.9
Less than 200	53.4	37.3	15.0
Less than 400	95.6	87.4	64.5
Less than 650	99.7	98.6	93.4
Less than 750	99.9	99.4	96.5

*All shipments for the entire year met criteria.

In 2012, 309,343 milk shipments were monitored (table 1). The Upper Midwest FMO accounted for 45.8 percent of the milk monitored in the four FMOs and 21.7 percent of all milk produced in the United States. The Upper Midwest and Mideast FMOs had a higher percentage of shipments relative to the amount of monitored milk. The opposite was true for the Central and Southwest FMOs, in which 12.0 and 2.5 percent of shipments accounted for 16.6 and 18.3 percent of the monitored milk, respectively, reflecting the larger herd sizes in these two FMOs.

Figure 2: Percentage of Shipments, by FMO and by BTSCC Level, 2012



2012 BTSCC Trends

The milk-weighted geometric BTSCC mean in 2012 was 194,000 cells/mL compared with 206,000 cells/mL in 2011, a decrease of 12,000 cells/mL (Figure 1). The milk-weighted BTSCC takes into account the amount of milk shipped by a producer, resulting in an overall BTSCC mean of monitored milk. The producer shipment BTSCC--which is a geometric, nonmilk-weighted mean of all shipments--decreased from 259,000 cells/mL in 2011 to 230,000 cells/mL in 2012.

Evaluating BTSCC Levels

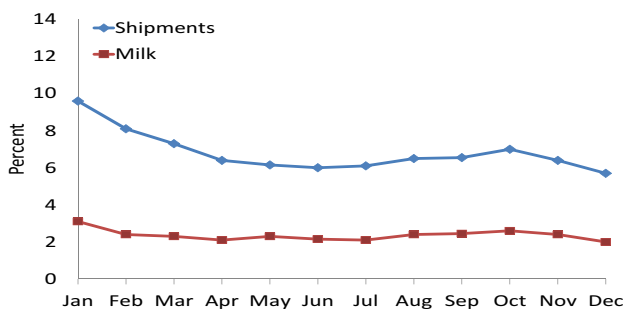
More than 99 percent of milk and shipments monitored met the current PMO limit of 750,000 cells/mL (table 2). Of the 28,274 producers, 96.5 percent (all but 990) shipped milk with BTSCCs below 750,000 cells/mL during all months monitored.

In 2012, during all monitored months, BTSCC in 95.6 percent of milk was less than 400,000 cells/mL; 64.5 percent of producers shipped milk below this limit for the entire year.

In 2012, about 50 percent of shipments in all FMOs had BTSCCs between 200,000 and 399,000 cells/mL. The four FMOs had a similar percentage of shipments in each of the four BTSCC levels, although a slightly higher percentage of shipments in the Mideast region were below 400,000 cells/mL (Figure 2).

Based on the criteria for the EU Health Certification Program from USDA-AMS--which call for a 3-month geometric mean BTSCC of less than 400,000 cells/mL--6 to 10 percent of U.S. shipments would have been noncompliant during 2012 (Figure 3). These shipments represented less than 3 percent of milk shipped during the monitored months.

Figure 3: Percentage of Shipments and Milk in 2012 that Would Have Been Noncompliant with the EU BTSCC Criteria, by Month



FMO and State BTSCC Trends

BTSCCs for all monitored FMOs combined have decreased every year since 2007 (Figure 4). With the exception of the Southwest FMO in 2010 and 2012, milk-weighted BTSCCs have decreased for each FMO since 2007. The Upper Midwest and Central FMOs had the highest BTSCCs during 2012 at 199,000 and 198,000 cells/mL, respectively, while the Mideast FMO had the lowest at 180,000 cells/mL. BTSCCs in the Southwest FMO have shown the most variation from 2009 to 2012.

Fifteen states marketed 60 percent or more of the milk produced in their states through the monitored FMOs and accounted for 95.3 percent of the monitored milk in the four FMOs (Table 3). Michigan, Minnesota, New Mexico, Texas, and Wisconsin accounted for 68.8 percent of all FMO-monitored milk. Thirteen of the fifteen states had decreased BTSCCs in 2012 compared with 2011.

Figure 4: Milk-Weighted BTSCCs by FMO and by Year

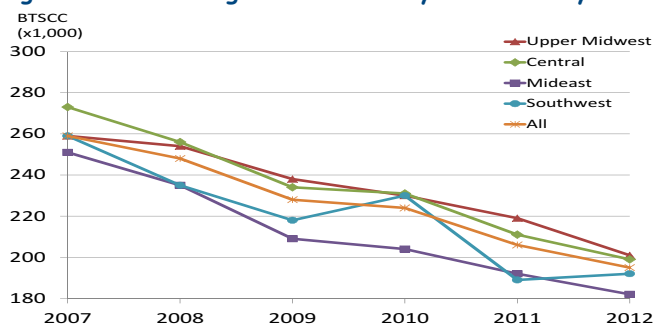


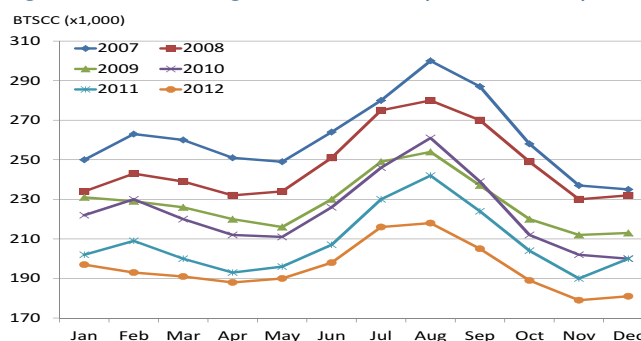
Table 3: Percentage of Milk, Shipments, and Producers by BTSCC Level During 2012

State	BTSCC (x1,000) by Year						
	Percent total monitored milk--						
	2012	2007	2008	2009	2010	2011	2012
CO	3.3	237	208	200	196	186	168
IL	1.8	272	262	260	258	241	214
IN	2.9	272	261	237	225	204	197
IA	7.4	282	281	252	241	228	206
KS	1.8	304	279	256	256	205	204
MI	9.9	237	211	183	174	167	156
MN	9.8	270	266	249	236	227	205
NE	1.5	274	266	194	184	182	182
NM	9.5	236	216	196	207	167	175
ND	0.3	276	269	269	271	276	243
OH	4.9	267	253	225	226	220	202
SD	2.5	292	275	262	248	247	220
TX	10.9	285	254	239	253	208	207
WI	28.7	249	247	233	230	218	199
WY	0.1	335	356	196	139	127	124
15 States	95.3	259	246	227	223	206	193

Seasonal BTSCC Trends

Monthly monitoring continues to show that BTSCCs peak during the summer months (July through September) when higher temperatures and humidity increase stress on cows and provide conditions more favorable for bacterial growth (Figure 5). In 2012, monthly milk-weighted BTSCCs were highest during August (219,000 cells/mL) and lowest in November (177,000 cells/mL). BTSCCs were lower in all months of 2012 compared with 2011.

Figure 5: Milk-Weighted BTSCCs by Year and by Month



Summary

BTSCCs from monitored FMOs are indicative of the quality of the nation's milk supply. The overall BTSCCs from the four FMOs have decreased every year since 2007. Data from 2012 show a decrease of 12,000 cells/mL in the milk-weighted geometric mean BTSCCs compared with 2011. The BTSCCs for three of the four FMOs decreased between 2011 and 2012. Thirteen of the 15 states shipping 60 percent or more of their milk through the four FMOs had lower BTSCCs in 2012 than 2011. In addition to improvements in management practices, the current EU import regulations may be partially responsible for the decrease in BTSCCs and the corresponding improvement in milk quality in 2012.

*Adapted from USDA Animal and Plant Health Inspection Services (APHIS) article "Determining U.S. Milk Quality Using Bulk-tank Somatic Cell Counts, 2012: http://www.aphis.usda.gov/animal_health/nahms/dairy/downloads/dairy_monitoring/BTSCC_2012infosheet.pdf

Computation of Producer Price Differential - August 2013

	Utilization Percentage	Product Pounds	Component Pounds	Rate	Value
Class I					\$ 5,350,779.51
Differential Value					
Product	10.6%	307,805,268			
Skim Milk			303,233,164	\$13.7700	41,755,206.65
Butterfat			4,572,104	1.5969	7,301,192.88
Class II					
Product	1.8%	52,954,129			
Nonfat Solids			4,131,691	1.6078	6,642,932.78
Butterfat			7,396,746	1.5174	11,223,822.39
Class III					
Product	87.1%	2,536,207,419			
Protein			76,589,055	3.4775	266,338,438.84
Other Solids			146,518,918	0.3901	57,157,029.92
Butterfat			87,574,254	1.5104	132,272,153.25
Class IV					
Product	0.5%	14,612,193			
Nonfat Solids			590,453	1.5868	936,930.84
Butterfat			8,091,255	1.5104	12,221,031.55
SCC Adjustment (Class II, III, and IV)					2,523,837.08
Total Producer Milk *		2,911,579,009			\$543,723,355.69
Add:					
Overage					21,703.20
Inventory Reclassified					(65,426.99)
Other Source Milk \$.60(h)					0.00
Other Source Milk \$.60(i)		193,894			4,983.08
Subtract:					
Transportation Credit					29,652.44
Assembly Credit					244,940.90
Credit for Reconstituted FMP					0.00
Producer Milk Protein					304,879,223.63
Producer Milk Other Solids					65,417,950.15
Producer Milk Butterfat					162,570,935.87
Producer Milk SCC Adjustment					2,828,527.46
Total Milk and Value		2,911,772,903			\$ 7,713,384.53
Add:					
Location Adjustment -- Producer and Unregulated Supply Plant Milk					2,251,692.53
One-Half Unobligated Balance Producer Settlement Fund					1,351,891.98
Total Value				0.388662	\$ 11,316,969.04
Subtract:					
Producer Settlement Fund Reserve				0.048662	1,416,941.17
Producer Price Differential **				\$0.34	\$9,900,027.87

* An estimated 216 million pounds of milk was not pooled.

** Producer Price Differential is dollars per cwt. at the Base Zone of Cook County, Illinois.

Upper Midwest Pool Statistics - August 2013

Market Class I Differential Rate	Pool Plants	Received at Pool Plants	Diverted to Pool and Nonpool Plants	Total	Location Adjustment to Producers	Class I Differential to Handlers	
Cwt.	Number	Pounds	Pounds	Pounds	Value	Pounds	Value
\$1.80	3	87,829,071	17,763,104	105,592,175	\$ 0	90,990,598	\$ 1,637,831
\$1.75	33	119,916,882	1,095,094,601	1,215,011,483	607,506	73,785,034	1,291,238
\$1.70	27	296,320,608	1,189,007,839	1,485,328,447	1,485,329	123,443,236	2,098,535
\$1.65	4	23,156,308	82,490,596	105,646,904	158,470	19,586,400	323,176
Total	67	527,222,869	2,384,356,140	2,911,579,009	\$ 2,251,305	307,805,268	\$ 5,350,780

Utilization and Classification of Milk

	August 2013		July 2013	August 2012
	Product Pounds	Butterfat Pounds	Product Pounds	Product Pounds
Class I Utilization:				
Packaged Disposition				
Milk	42,246,677	1,385,072	40,881,061	42,456,006
Flavored Milk	2,430,949	75,943	2,239,184	2,520,970
Reduced Fat Milk	115,024,901	2,220,318	110,554,683	121,070,508
Lowfat Milk	54,826,339	517,598	51,514,101	57,977,723
Fat Free Milk	67,423,523	59,818	64,802,387	75,593,072
Flavored Reduced and Fat Free Milk	23,477,162	206,070	19,045,835	23,108,793
Buttermilk	3,138,020	47,149	3,062,328	2,949,671
Total Packaged Disposition	308,567,571	4,511,968	292,099,579	325,676,743
Total Ending Inventory	18,701,745	249,212	18,757,277	21,770,443
Bulk to Nonpool Plants	2,371,876	51,141	2,533,532	2,147,244
Shrinkage	957,014	87,513	868,494	1,551,992
Total Class I Utilization	330,598,206	4,899,834	314,258,882	351,146,422
Other Order Plants	(2,925,438)	(50,189)	(2,584,563)	(2,545,087)
Beginning Inventory	(19,614,808)	(275,830)	(20,507,740)	(20,543,736)
Reused Products	0	0	0	0
Other Source Milk	(239,333)	(662)	(280,528)	(320,946)
Overage	0	0	0	0
Interhandler Adjustment	(13,359)	(1,049)	(155,499)	158,526
Class I Producer Milk	307,805,268	4,572,104	290,730,552	327,895,179
Class II Utilization:				
Total Class II Utilization	60,455,407	7,431,161	60,993,233	204,571,427
Other Order Plants	--	--	--	0
Beginning Inventory	(1,003,583)	(31,152)	(1,231,865)	(6,413,084)
Reused Products	(6,497,695)	(3,263)	(5,453,624)	(6,513,912)
Other Source Milk	--	--	(39,488)	(98,920)
Overage	0	0	0	--
Class II Producer Milk	52,954,129	7,396,746	54,268,256	191,545,511
Class III Utilization:				
Total Class III Utilization	2,559,548,052	87,777,013	2,572,095,787	1,676,912,041
Other Order Plants	(3,252,551)	(50,408)	(10,748,998)	--
Beginning Inventory	(9,608,866)	(118,603)	(11,340,334)	(3,956,381)
Reused Products	0	0	0	0
Other Source Milk	(10,427,411)	(26,928)	(17,785,346)	(1,017,827)
Overage	(51,805)	(6,820)	(92,203)	(93,052)
Class III Producer Milk	2,536,207,419	87,574,254	2,532,128,906	1,671,844,781
Class IV Utilization:				
Total Class IV Utilization	57,446,886	10,549,169	65,478,604	147,620,861
Other Order Plants	(6,570,099)	(339,851)	(6,381,551)	(2,319,685)
Beginning Inventory	(5,767,735)	(688,371)	(10,275,234)	(13,645,365)
Reused Products	0	0	0	0
Other Source Milk	(30,485,520)	(1,426,841)	(33,688,343)	(61,195,220)
Overage	(11,339)	(2,851)	(18,809)	(2,354)
Class IV Producer Milk	14,612,193	8,091,255	15,114,667	70,458,237
Total Producer Milk -- All Classes	2,911,579,009	107,634,359	2,892,242,381	2,261,743,708

-- Restricted Information

Commodity Prices

Month/Year	Weighted Monthly Average Prices *						Weighted Two-Week Average Prices *					
	Cheddar Cheese			Nonfat			Cheddar Cheese			Nonfat		
	Blocks	Barrels	Average	Butter	Dry Milk	Dry Whey	Blocks	Barrels	Average	Butter	Dry Milk	Dry Whey
	<i>Dollars per Pound</i>						<i>Dollars per Pound</i>					
Aug 2012	1.7483	1.7624	1.7682	1.6859	1.2543	0.5352	1.7361	1.7464	1.7545	1.6877	1.2518	0.5350
Sep	1.8582	1.8423	1.8647	1.8269	1.3768	0.5846	1.8524	1.8262	1.8542	1.8237	1.3708	0.5804
Oct	2.0366	2.0308	2.0479	1.9168	1.4636	0.6205	1.9953	2.0156	2.0186	1.9197	1.4503	0.6130
Nov	2.0210	1.9769	2.0146	1.8410	1.5143	0.6480	2.0669	2.0474	2.0717	1.8860	1.5112	0.6450
Dec	1.8090	1.7439	1.7925	1.5981	1.5384	0.6610	1.8405	1.7769	1.8250	1.6126	1.5442	0.6588
Jan 2013	1.7449	1.7277	1.7485	1.5066	1.5601	0.6503	1.7506	1.7264	1.7535	1.5280	1.5603	0.6536
Feb	1.6754	1.6190	1.6623	1.5438	1.5559	0.6393	1.6694	1.5993	1.6480	1.5393	1.5644	0.6399
Mar	1.6339	1.6296	1.6467	1.6146	1.5208	0.6048	1.6362	1.6142	1.6402	1.5909	1.5219	0.6094
Apr	1.7313	1.7007	1.7310	1.6766	1.5312	0.5741	1.6764	1.6542	1.6803	1.6542	1.5021	0.5797
May	1.8556	1.7640	1.8274	1.6483	1.6374	0.5765	1.8864	1.7519	1.8388	1.6579	1.6367	0.5741
Jun	1.7569	1.7778	1.7810	1.5422	1.6878	0.5738	1.7658	1.7664	1.7806	1.5590	1.6826	0.5710
Jul	1.7020	1.6983	1.7142	1.4674	1.7272	0.5804	1.7141	1.6974	1.7201	1.4902	1.7131	0.5769
Aug	1.7498	1.7727	1.7731	1.4187	1.7706	0.5778	1.7463	1.7888	1.7778	1.4448	1.7679	0.5752

Month/Year	Chicago Mercantile Exchange						
	Butter	Cheddar Cheese		Nonfat Dry Milk (Low/Medium Heat)		Whey Powder	
	Grade AA	Blocks	Barrels	Central & East	West	Central	West
	<i>Dollars per Pound</i>						
Aug 2012	1.7687	1.8262	1.7889	1.4312	1.3770	0.5221	0.5553
Sep	1.8803	1.9245	1.8780	1.5963	1.5157	0.5751	0.5979
Oct	1.9086	2.0757	2.0240	1.5555	1.4973	0.6003	0.6134
Nov	1.7910	1.9073	1.8388	1.5458	1.5163	0.6299	0.6221
Dec	1.5590	1.7448	1.6634	1.5666	1.5458	0.6318	0.6184
Jan 2013	1.4933	1.6965	1.6388	1.5723	1.6592	0.6302	0.5993
Feb	1.5713	1.6420	1.5880	1.5590	1.5291	0.6137	0.5894
Mar	1.6421	1.6240	1.5920	1.5268	1.4995	0.5830	0.5768
Apr	1.7197	1.8225	1.7124	1.6590	1.6231	0.5581	0.5705
May	1.5997	1.8052	1.7251	1.7023	1.6769	0.5514	0.5884
Jun	1.5105	1.7140	1.7184	1.7184	1.6950	0.5528	0.5888
Jul	1.4751	1.7072	1.6919	1.7548	1.7565	0.5486	0.5907
Aug	1.4013	1.7493	1.7425	1.7993	1.7832	0.5495	0.5825

Market Statistics

Month/Year	Distributing Plants	Supply Plants	Coop .9(c) Handlers	Producers	Total Producer Milk	Est. Average Daily Delivery Per Producer	Class I Utilization	Butterfat Test	Protein Test	Other Solids Test	Weighted Average SCC
					Mil. lbs.	Pounds	Percent	Percent	Percent	Percent	
										(000)	
Jun 2012	20	51	12	12,744	2,582	6,753	11.4	3.63	3.00	5.76	221
Jul	20	53	12	11,551	2,235	6,239	13.2	3.58	2.94	5.74	246
Aug	20	51	12	11,196	2,262	6,513	14.5	3.63	3.01	5.74	248
Sep	20	51	12	10,911	2,072	6,327	15.1	3.74	3.09	5.73	227
Oct	21	51	12	11,083	2,027	5,897	16.7	3.89	3.17	5.73	209
Nov	21	51	12	11,721	2,265	6,441	14.8	3.91	3.18	5.72	203
Dec	21	50	12	12,439	2,782	7,211	11.6	3.89	3.15	5.74	201
Jan 2013	21	51	12	12,935	3,030	7,550	11.0	3.89	3.14	5.74	210
Feb	19	51	12	12,803	2,699	7,528	11.0	3.88	3.14	5.75	214
Mar	18	49	12	12,679	3,010	7,655	10.4	3.87	3.14	5.74	212
Apr	18	49	12	12,662	2,895	7,619	10.8	3.84	3.12	5.74	213
May	18	50	12	11,978	2,847	7,666	11.0	3.77	3.09	5.76	216
Jun	17	48	12	12,455	2,847	7,619	9.5	3.71	3.04	5.76	231
Jul	17	48	12		2,892		10.1	3.66	2.98	5.75	254
Aug	17	50	12		2,912		10.6	3.70	3.01	5.76	241

Class Prices

Month/Year	Class I Price Mover			Class I Price at Cook County, IL			Class II Price			
	Butterfat	Skim Milk	3.50%	Butterfat	Skim Milk	3.50%	Butterfat	Nonfat Solids	Skim Milk	3.50%
	<i>lb.</i>	<i>cwt.</i>	<i>cwt.</i>	<i>lb.</i>	<i>cwt.</i>	<i>cwt.</i>	<i>lb.</i>	<i>lb.</i>	<i>cwt.</i>	<i>cwt.</i>
Aug 2012	1.6386	11.21	16.55	1.6566	13.01	18.35	1.8409	1.0589	9.53	15.64
Sep	1.8361	11.57	17.59	1.8541	13.37	19.39	2.0117	1.1511	10.36	17.04
Oct	2.0008	12.31	18.88	2.0188	14.11	20.68	2.1206	1.2689	11.42	18.44
Nov	2.1171	13.77	20.70	2.1351	15.57	22.50	2.0288	1.3478	12.13	18.81
Dec	2.0763	14.63	21.39	2.0943	16.43	23.19	1.7346	1.4078	12.67	18.30
Jan 2013	1.7452	13.33	18.97	1.7632	15.13	20.77	1.6238	1.4400	12.96	18.19
Feb	1.6427	12.91	18.21	1.6607	14.71	20.01	1.6689	1.4567	13.11	18.49
Mar	1.6564	12.44	17.80	1.6744	14.24	19.60	1.7546	1.4600	13.14	18.82
Apr	1.7189	12.07	17.66	1.7369	13.87	19.46	1.8297	1.4189	12.77	18.73
May	1.7955	11.89	17.76	1.8135	13.69	19.56	1.7954	1.3989	12.59	18.43
Jun	1.8000	13.09	18.93	1.8180	14.89	20.73	1.6669	1.5322	13.79	19.14
Jul	1.6803	13.50	18.91	1.6983	15.30	20.71	1.5763	1.5778	14.20	19.22
Aug	1.5969	13.77	18.88	1.6149	15.57	20.68	1.5174	1.6078	14.47	19.27
Sep	1.5420	14.26	19.16	1.5600	16.06	20.96		1.6622	14.96	

Month/Year	Class III Price					Class IV Price			
	Butterfat	Protein	Other Solids	Skim Milk	3.50%	Butterfat	Nonfat Solids	Skim Milk	3.50%
	<i>lb.</i>	<i>lb.</i>	<i>lb.</i>	<i>cwt.</i>	<i>cwt.</i>	<i>lb.</i>	<i>lb.</i>	<i>cwt.</i>	<i>cwt.</i>
Aug 2012	1.8339	3.1211	0.3462	11.72	17.73	1.8339	1.0756	9.68	15.76
Sep	2.0047	3.2521	0.3971	12.42	19.00	2.0047	1.1969	10.77	17.41
Oct	2.1136	3.7278	0.4340	14.12	21.02	2.1136	1.2828	11.55	18.54
Nov	2.0218	3.7172	0.4624	14.25	20.83	2.0218	1.3330	12.00	18.66
Dec	1.7276	3.3113	0.4758	13.07	18.66	1.7276	1.3569	12.21	17.83
Jan 2013	1.6168	3.2862	0.4647	12.93	18.14	1.6168	1.3784	12.41	17.63
Feb	1.6619	2.9609	0.4534	11.85	17.25	1.6619	1.3742	12.37	17.75
Mar	1.7476	2.8204	0.4179	11.21	16.93	1.7476	1.3395	12.06	17.75
Apr	1.8227	3.0130	0.3863	11.62	17.59	1.8227	1.3498	12.15	18.10
May	1.7884	3.3597	0.3887	12.71	18.52	1.7884	1.4549	13.09	18.89
Jun	1.6599	3.3455	0.3859	12.65	18.02	1.6599	1.5048	13.54	18.88
Jul	1.5693	3.2257	0.3927	12.32	17.38	1.5693	1.5438	13.89	18.90
Aug	1.5104	3.4775	0.3901	13.08	17.91	1.5104	1.5868	14.28	19.07

Producer Prices

Month/Year	Producer Price Differential	Statistical Uniform Price (at 3.50%)	Butterfat Price	Protein Price	Other Solids Price	SCC Adjustment Rate	Producer Mailbox Price (at test)
	<i>\$ per cwt.</i>	<i>\$ per cwt.</i>	<i>\$ per lb.</i>	<i>\$ per lb.</i>	<i>\$ per lb.</i>	<i>\$ per cwt.</i>	<i>\$ per cwt.</i>
Jun 2012	0.07	15.70	1.4866	2.8952	0.3113	0.00079	16.92
Jul	(0.02)	16.66	1.6556	3.0430	0.3123	0.00084	17.54
Aug	(0.04)	17.69	1.8339	3.1211	0.3462	0.00088	18.89
Sep	(0.14)	18.86	2.0047	3.2521	0.3971	0.00093	20.61
Oct	(0.49)	20.53	2.1136	3.7278	0.4340	0.00102	22.85
Nov	(0.15)	20.68	2.0218	3.7172	0.4624	0.00101	22.75
Dec	0.32	18.98	1.7276	3.3113	0.4758	0.00090	21.17
Jan 2013	0.20	18.34	1.6168	3.2862	0.4647	0.00087	20.42
Feb	0.32	17.57	1.6619	2.9609	0.4534	0.00083	19.56
Mar	0.33	17.26	1.7476	2.8204	0.4179	0.00082	19.29
Apr	0.25	17.84	1.8227	3.0130	0.3863	0.00087	19.75*
May	0.11	18.63	1.7884	3.3597	0.3887	0.00091	20.21
Jun	0.30	18.32	1.6599	3.3455	0.3859	0.00089	19.65
Jul	0.40	17.78	1.5693	3.2257	0.3927	0.00086	
Aug	0.34	18.25	1.5104	3.4775	0.3901	0.00089	*revised 5/2/14

FEDERAL MILK MARKET ADMINISTRATOR
 U.S. DEPARTMENT OF AGRICULTURE
 1600 W. 82nd St., Suite 200
 Minneapolis, MN 55431-1420

FIRST-CLASS MAIL
 U.S. POSTAGE PAID
 HOPKINS, MN
 PERMIT NO. 586

Address Service Requested

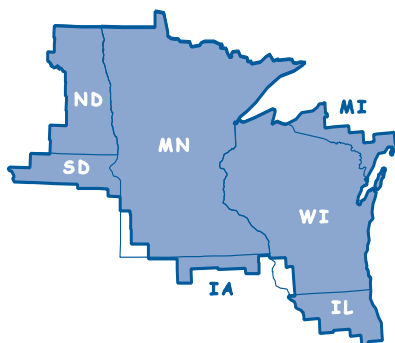
Summary of Federal Order Data - August 2013

Federal Order Number / Name	Producer Deliveries <i>— Thousand Pounds —</i>	Class I Producer Receipts	Class I Utilization <i>Percent</i>	Class I Price <i>— Dollars per Cwt. —</i>	Producer Price Differential	Uniform or Statistical Uniform Price at 3.5% Butterfat		
						FOB Market	FOB Cook Cty. Illinois <i>Dollars per Cwt.</i>	Change From Previous Year
1 Northeast	2,130,783	786,017	36.9	\$22.13	\$2.37	\$20.28	\$18.83	\$1.88
5 Appalachian	467,621	330,061	70.6	22.28	n/a	21.35	19.75	2.03
6 Florida	230,986	203,092	87.9	24.28	n/a	23.56	19.96	2.10
7 Southeast	497,167	359,391	72.3	22.68	n/a	21.81	19.81	1.86
30 Upper Midwest	2,911,579	307,805	10.6	20.68	0.34	18.25	18.25	0.56
32 Central	1,262,209	418,607	33.2	20.88	1.01	18.92	18.72	1.49
33 Mideast	1,416,019	553,528	39.1	20.88	1.41	19.32	19.12	1.85
124 Pacific Northwest	645,786	180,042	27.9	20.78	1.02	18.93	18.83	1.80
126 Southwest	988,436	363,083	36.7	21.88	1.83	19.74	18.54	1.20
131 Arizona	360,339	115,908	32.2	21.23	n/a	19.41	18.86	1.72
All Market Average or Total *	10,910,924	3,617,533	33.2					

n/a = Not applicable. * May not add due to rounding.

The U.S. Department of Agriculture (USDA) prohibits discrimination in all its programs and activities on the basis of race, color, national origin, age, disability, and where applicable, sex, marital status, familial status, parental status, religion, sexual orientation, genetic information, political beliefs, reprisal, or because all or part of an individual's income is derived from any public assistance program. (Not all prohibited bases apply to all programs.) Persons with disabilities who require alternative means for communication of program information (Braille, large print, audiotape, etc.) should contact USDA's TARGET Center at (202) 720-2600 (voice and TDD).

To file a complaint of discrimination, write to USDA, Director, Office of Civil Rights, 1400 Independence Avenue, S.W., Washington, D.C. 20250-9410, or call (800) 795-3272 (voice) or (202) 720-6382 (TDD). USDA is an equal opportunity provider and employer.



Upper Midwest Marketing Area F.O. 30

Phone: (952) 831-5292

Fax: (952) 831-8249

Website: www.fmma30.com

